

V40R

Radio-remote mobile pick-and-carry crane



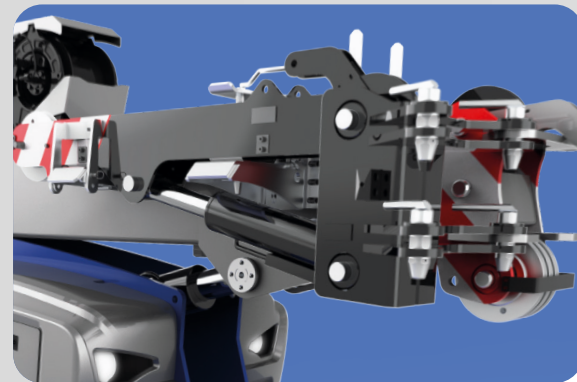
The Original
Pick & Carry Crane

Zero Emission 

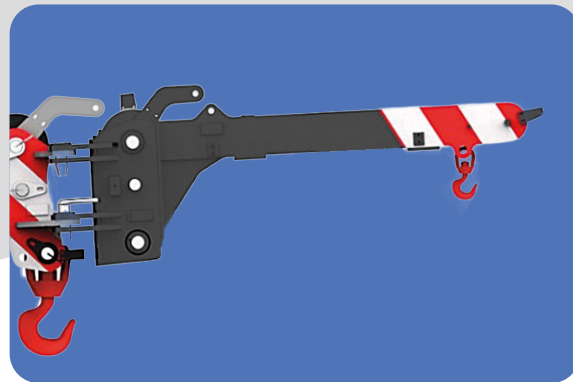
OPTIONS



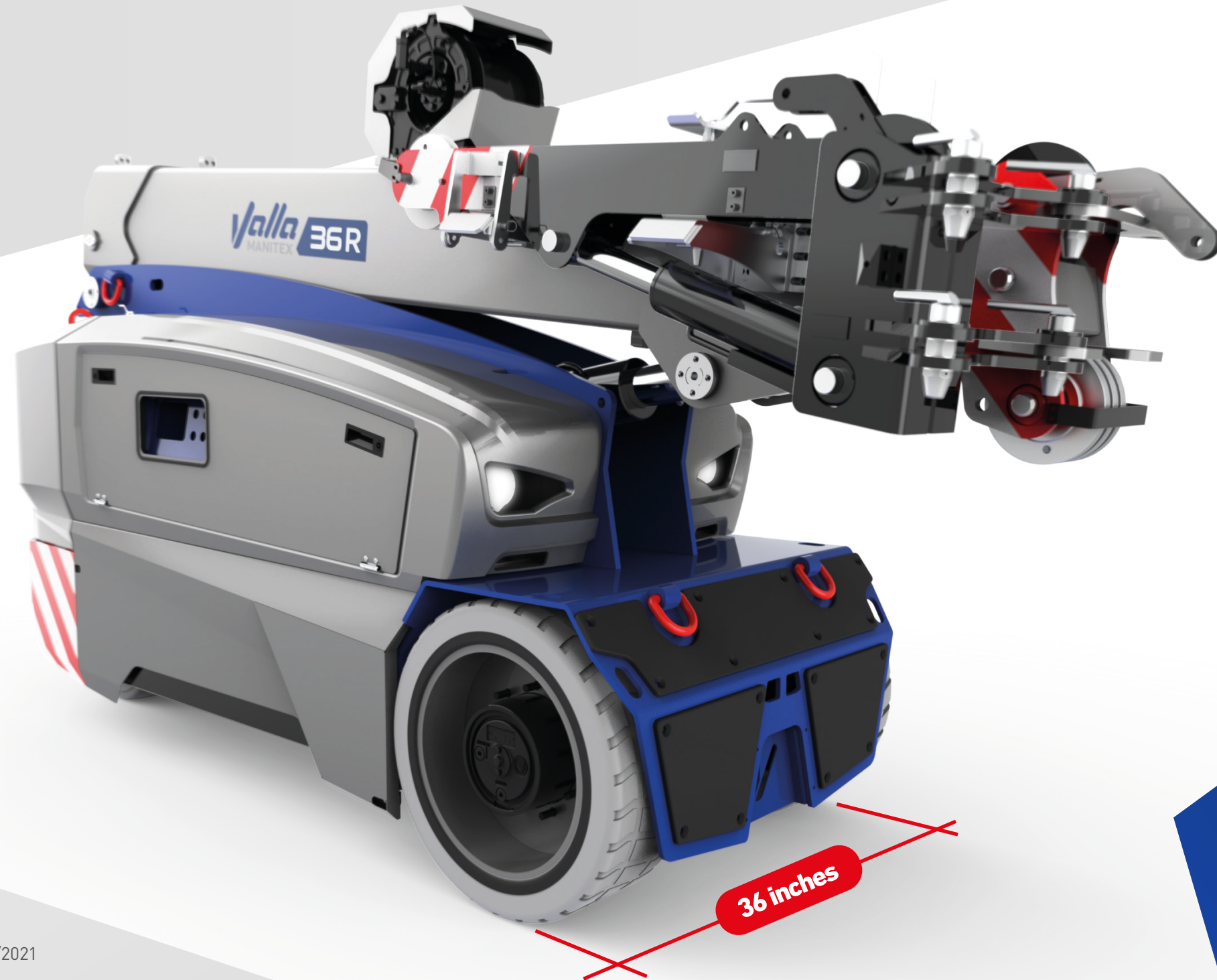
HYDRAULIC WINCH
Treuil Winde
Cabrestante



HYDRAULIC SWING AWAY JIB
Flechette pliable faltbarer
Ausleger / Pluma plegable



MECHANICAL SWING AWAY JIB
Flechette mécanique / Mechanischer
Ausleger / Pluma mecánica



Manitex Valla North America

Headquarters
9725 Industrial Drive
Bridgeview, IL 60455
www.manitexvalla.com



cod. 891.091 Ed. 03/2021

V40R

Max Capacity

Capacité maxi
Max Tragfähigkeit / Max capacidad

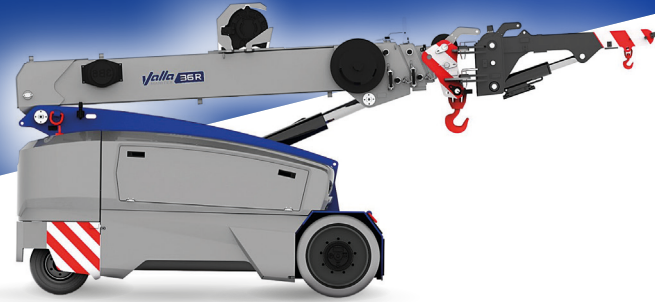
7,920 lbs

Max Capacity
 Capacité maxi
 Max Tragfähigkeit / Max capacidad **7,920 lbs**

Max Tip Height on Main Boom
 Hauteur de levage maximum
 Maximale Hubhöhe / Altura máxima de elevación **24 ft**

Total Weight
 Poids total
 Gesamtgewicht / Peso total **8,030 lbs**

Dimensions
 Abmessungen / Dimensiones **8' 1" x 3' x 5' 1"**



V40R

FRONT
 N° 2 Cushion 22x8x16
 Avant
 Vorderrad
 Delantera

REAR
 N° 2 S.E. 16x6-8
 Arrière
 Hinterrad
 Trasera

3,200 psi – 10.75 hp AC HYDRAULIC SYSTEM (MAX PRESSURE / MOTOR HP)
 Hydraulique (Pression maxi/Puissance moteur)
 Hydraulik (Max Druck/Motorleistung)
 Hidraulica (Presion max/Potencia motor)

600 W AC 180° REAR WHEEL STEERING
 Direction arrière
 Hintere Lenkung
 Dirección trasera

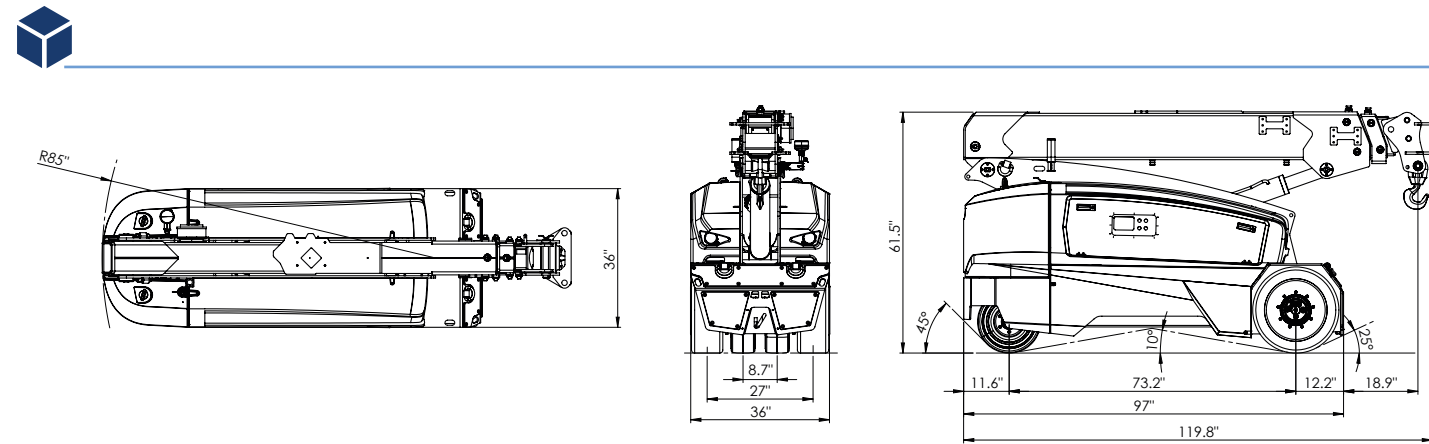
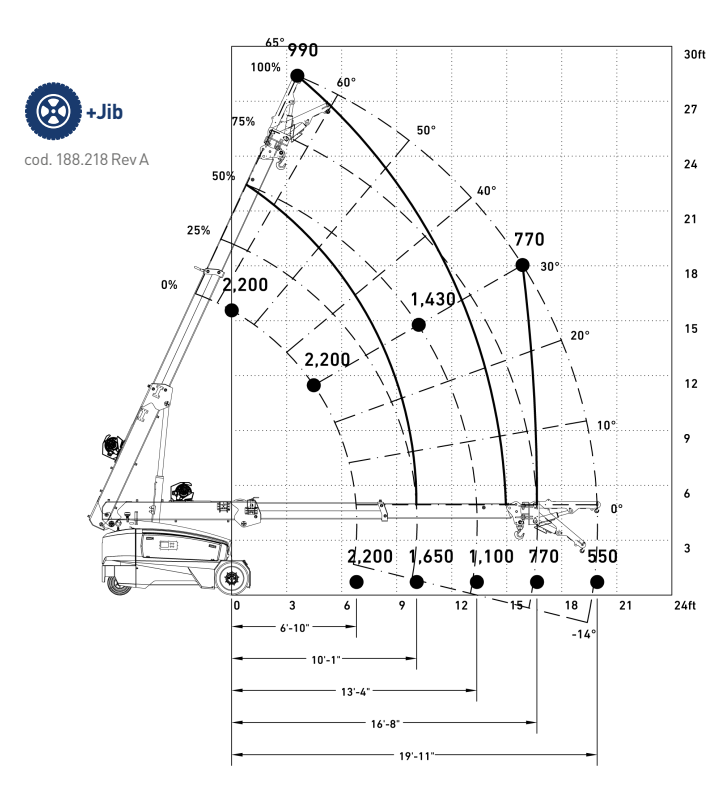
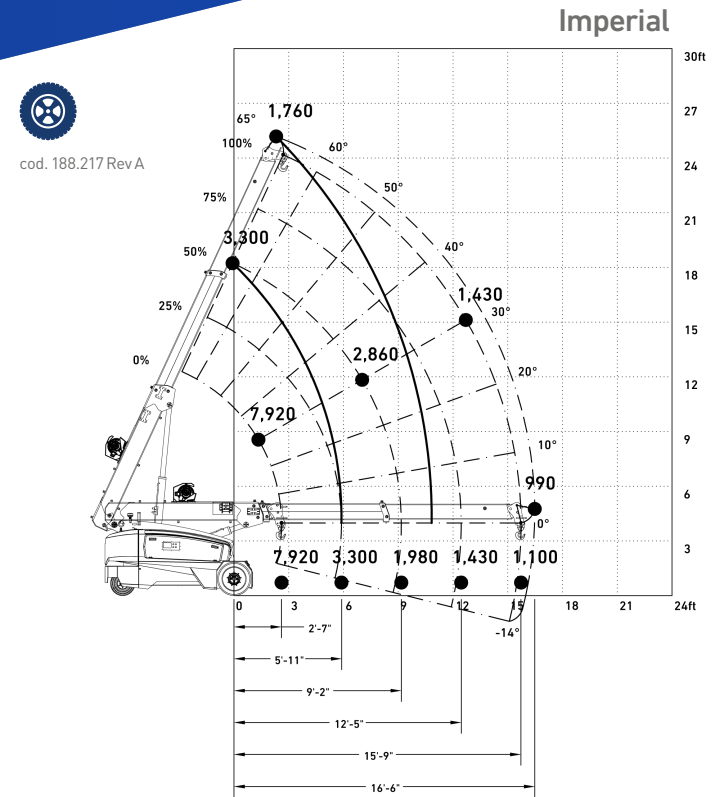
ELECTRIC BRAKES
 Freins electro
 ElektroBremse
 Frenos electros

FRONT WHEEL DRIVE 2x2.5 hp AC
 À traction arrière
 Heckantrieb
 Tracción trasera

80V - 300 Ah

COUNTERWEIGHT 2,070 lbs
 Contrepoids
 Gegengewichte
 Contrapesos

STANDARD



Design Standard
 Normes de référence
 Referenzstandards
 Estandards de referencia
2006/42 CE
EN 13000