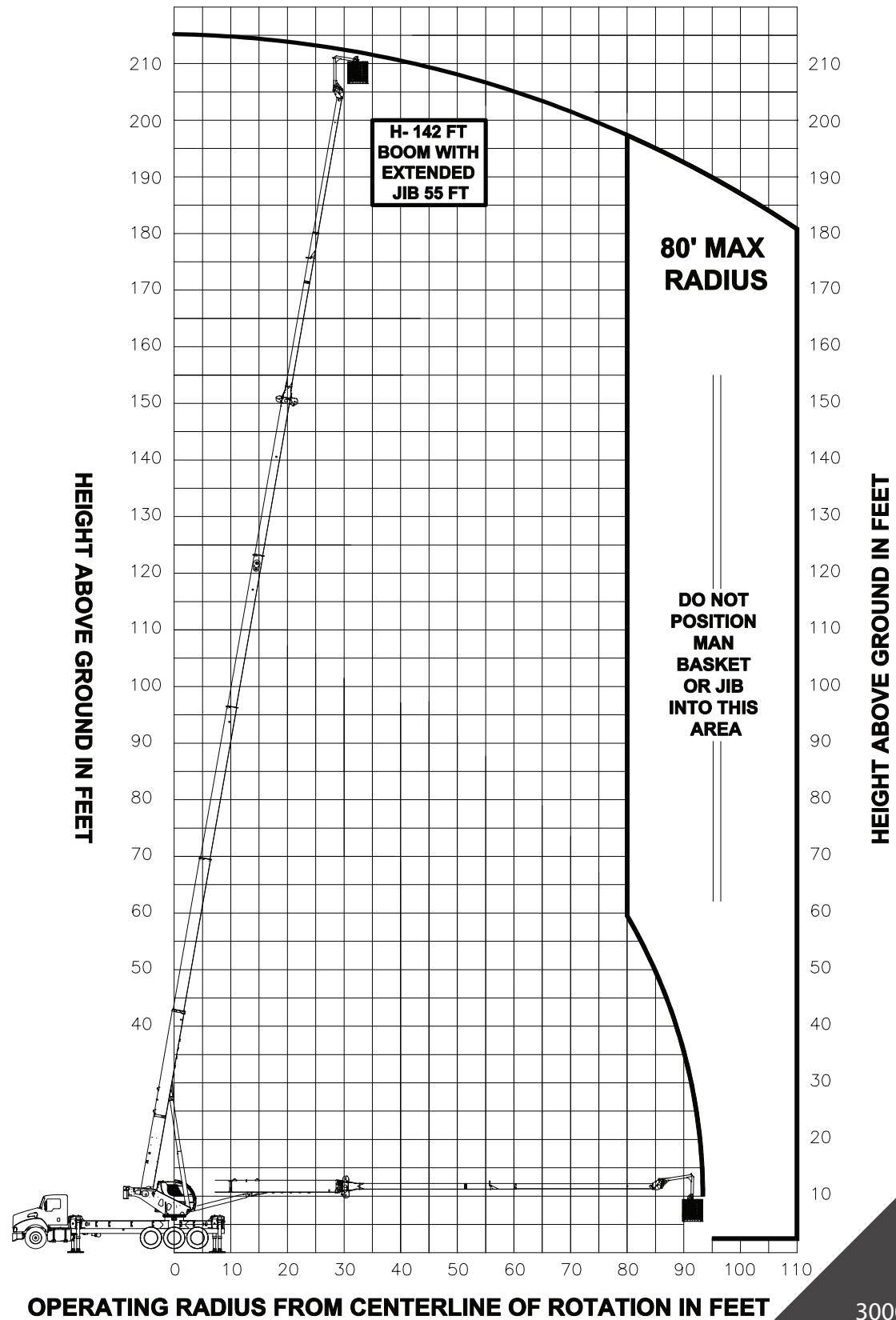


**EXTENDED 55 FT JIB RANGE DIAGRAM OPERATING CODE 55
1200 LB MANBASKET CAPACITY**



3000 South Austin Avenue
Georgetown, Texas 78626

Toll Free: 877-314-3390
Main Operator: 512-942-3000



TC450U

Designed for transmission and
distribution line applications.

TC450U

Standard

- 45 Ton Max Capacity
- 142' Boom Length
- 210 Foot Maximum Working Height
- ROC - Radio Outrigger Controls
- 360 Degree Operation

Options

- 30'-55' Telescopic Jib
- Front Stabilizer
- Basket Equipped with Intensifier for Crimping and Related Hydraulic Tools
- Central Tire Inflation System
- Back Up and Side View Cameras
- A92.2 Aerial Lift Dual Rating

Chassis

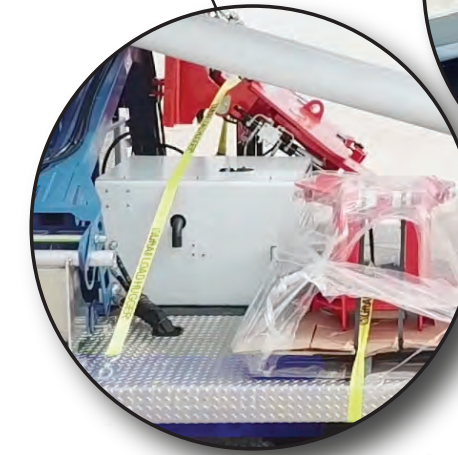
- Pete 567 90K GVWR
- X15 Cummins 505HP
- Allison 4700 RDS
- 69K Tri-Drive with Pusher & Tag
- 18,000lb. Pintle hitch
- Federal bridge compliant configurations available



- Radio Remotes

- Wind Speed Indicator

- Fully enclosed Hatz diesel power unit lowers personnel and stows machine in the event of prime mover power loss.



- Pole Guide System

- Main Hoist Camera



- Boom Lighting Package

- Strobe and perimeter lighting packages available

- Aluminum Decking

- Full Vision Cab with Heat A/C and 20 Degree Tilt Feature

- 2-Person 1,200lb. Capacity Quick Attach aerial work platform A92.2 compliant



- LMI Utilization Light Tower Notifies personal of Crane Condition



- Easy Access Maintenance Ladder

