

# PM 210 SP



truck mounted cranes

Platinum Series



## TECHNICAL DATA

The best technologies, an innovative design, the use of special materials that combine strength and lightness and advanced electronic systems for performance excellence. PM 210 SP ensures best results even in extreme working conditions and always with maximum safety. The exceptional hydraulic outreach, combinable with a jib specifically designed, allows to reach over 45 meters horizontally and 50 meters vertically. Its structural characteristics and techniques makes PM210SP an extremely powerful and versatile crane.



Continuous Rotation System



Remote Control

## STANDARD CONFIGURATION

### POWER TRONIC ADVANCE

Maximum crane Performance and Maximum Safety in all operating position.

PROPORTIONAL VALVE BLOCK WITH COMPENSATED FLOW FOR ALL MOVEMENTS

DOUBLE OIL COOLER

### CONTINUOUS ROTATION SYSTEM

DOUBLE LINK

REGENERATIVE EXTENSION BOOM KIT

RADIO REMOTE CONTROL MULTIFUNCTION WITH DISPLAY

LIFTING HOOK



Octagonal extension booms profile

# PM 210 SP



truck mounted cranes

## OPTIONAL

180° HYDRAULIC SWING UP OUTRIGGERS

WINCH

ACTIVATION WITH HOSE REELS OR HOSE TRAYS

HIGH EFFICIENCY LED WORK LIGHTS



High efficiency LED work lights



Activation with hose reels or hose trays



Winch



180° hydraulic swing up outrigger

## EQUIPMENTS SUMMARY

Equipments	Standard	Option
Continuous slewing	<input type="radio"/>	
Double linkage	<input type="radio"/>	
Hydraulic outriggers	<input type="radio"/>	
180 ° Hydraulic swing up outrigger		<input type="radio"/>
Double Oil cooler	<input type="radio"/>	
Proportional compensated valve block	<input type="radio"/>	
Multifunction radio control	<input type="radio"/>	
Jib		<input type="radio"/>
Hydraulic winch on crane		<input type="radio"/>
Hose reel		<input type="radio"/>
Hose racks supplementary		<input type="radio"/>
Regenerative valve	<input type="radio"/>	
Stability Power System*		<input type="radio"/>
Safety Kit for outriggers*		<input type="radio"/>
Ball-joint outrigger plates *		<input type="radio"/>
Sensore allarme 4 metres alarm sensor with control panel in cab *		<input type="radio"/>
Electronic Slewing lock valve with variable setting	<input type="radio"/>	
LED work lamp		<input type="radio"/>
Oil tank		<input type="radio"/>

\*compulsory for CE area

## CERTIFICATION



In accordance to the EU safety standards



3 years of warranty on the structural parts



Quality Certificate UNI EN ISO 9001:2008



In accordance to H1-B3 standard

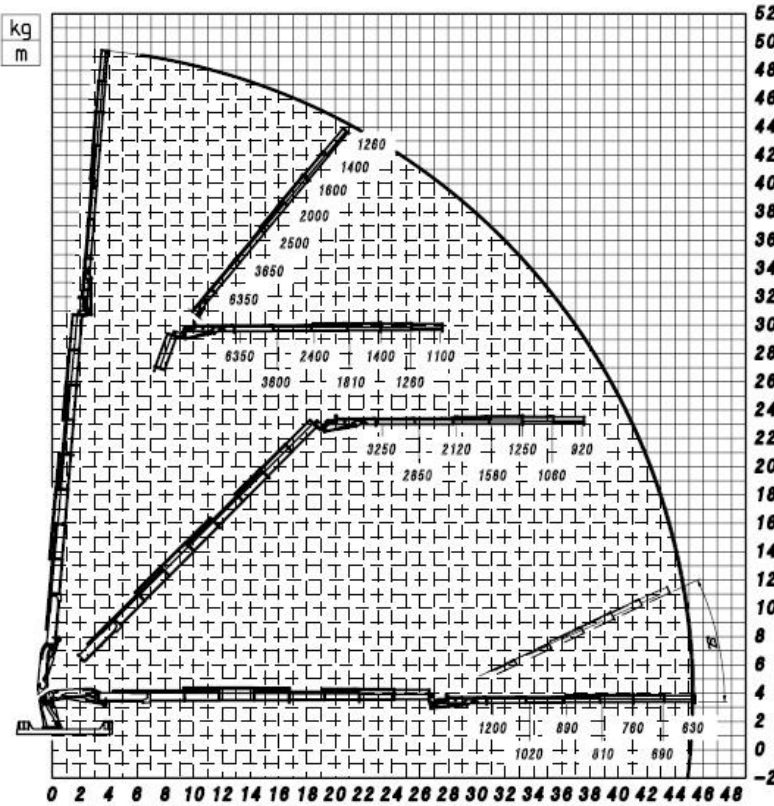
# PM 210 SP



truck mounted cranes

## PM 210028 SP + J3116

Platinum Series



### TECHNICAL INFORMATION PM 210028 SP + J3116

Hydraulic outreach	
Horizontal	m 45,4
Vertical	m 49,05
Hydraulic system	
Max. oil flow	l/min 120+120
Max. pressure	Mpa 38,5
Oil tank capacity	l 600
Slewing system	
Slewing angle	Cont.
Slewing moment	kNm 124
Max. working heel	%(^) 8,7(5)
Standard crane weight	
Empty oil tank	Kg 14345

Technical data can be revised without prior notice.

### TRUCKING CRANE COMBINATION

PTT/GVV	210	4	4 outriggers
32,0 TON	4		

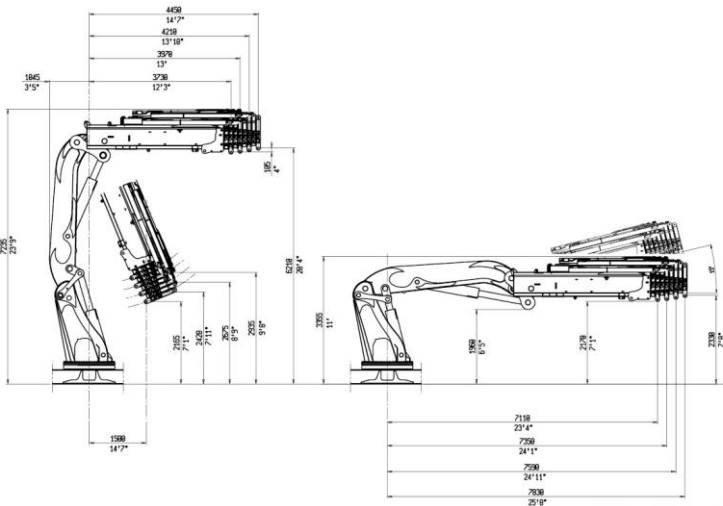
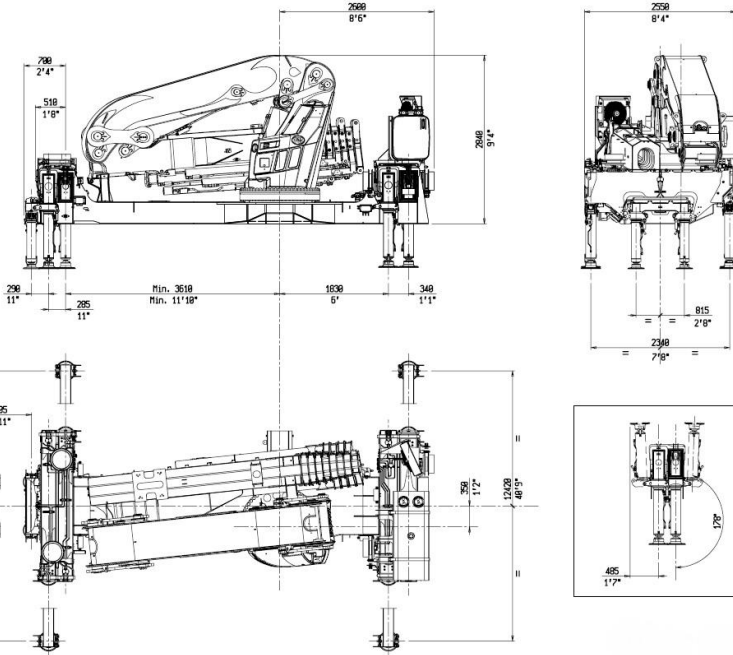
PTT: G.V.V.

# PM 210 SP



truck mounted cranes

## DIMENSIONS Crane with Jib



## ORIGINAL PM PARTS



Variable pump



Fixed pump

## ACCESSORIES



Pallet forks



Buckets



Rotator