



MANITEX

ARTICULATING CRANES



PRODUCT
OVERVIEW

38.5 SP GOLD
SERIES

CONTROL STATION

More comfort and more safety.

A SPECIFIC STUDY HAS RESULTED IN A PERFECT COMBINATION OF DESIGN AND ERGONOMIC CONTROLS.

Lever system.

An outrigger manoeuvring lever system incorporated horizontally in the control panel ensures a complete protection to the operator against incorrect manoeuvres in the stabilisation phase. The position of the stabilisation controls improves the accessibility to the levers and provides a more intuitive use of the controls.

Backlit plates.

The control plates are fitted with high intensity and low consumption LED lighting to increase visibility in all light conditions. The crane controls can now be easily and safely operated even in dark conditions.

Design and materials.

The design allows the operator to easily control at any moment all the control system information in order to fully exploit the crane in all its configurations. The use of a particular compound that protects the housing against UV rays guarantees its structural strength and shine over time.



Stability control.

A backlit level gauge fitted in the housing allows the operator to check the planarity of the truck. A specially positioned mirror makes it possible to see the level gauge from any direction even from a significant distance during radio controlled stabilisation manoeuvres.

BEST ERGONOMICS

GREATER SAFETY

MAXIMUM COMFORT

POWER TRONIC ADVANCE

Electronic control for great performance.

Maximum lifting power.

The crane's activity is constantly monitored by the electronic control and all the management modes of the control system are shown on the graphic display. The dynamic load control allows the operator to use the full performance of the easily, in total safety.

Real time diagnostics.

The on-board computer (multitasking), with operating system that can manage millions of operations per second, guarantees immediate response from the machine, granting control and productivity.

NGraphic display.

Larger, more visible and with more information.

CANBUS 2.0 data transmission protocol.

Remote support.

Operating system configured for remote diagnostics and support.



GREATER CONTROL

GREATER SPEED



RADIO REMOTE CONTROL.

Frequency Jumping.

The Frequency jumping data transmission system constantly changes the transmission frequency, reducing to a minimum any interruption caused by electromagnetic interferences. In this case, it is guaranteed the performance of the crane.

Large backlit display.

It offers good visibility also when working at night.

Bi-directional communication.

The operator's controls are translated into visual feedback on the display: lifting percentage, pressure values, work angles, etc. The same information is shown on the Power Tronic's main display.

E-FLOWSHARING function.

The optimised management of the movements ensures greater fluidity and control in the case of multiple manoeuvres, like lifting, extending and rotating at the same time. As a result this function increases crane's efficiency.

STABILITY POWER SYSTEM

Maximum control,
maximum safety.

Stability control system.

Always crane's lifting capacity and extension are defined in relation to truck's stability. In this way can be operated safely, optimizing any performance.

Stability Power System is available in different versions, designed to meet specific operating requirements.

Stability Power System is mandatory for EC markets.

Visible safety.

Information on the actual extension of the outriggers and the position on the ground of each outrigger cylinder are shown on the Power Tronic Advance's display and on the MCS display.

Manitex Stability Power System.

With front outriggers, the load capacity over the cab can be maximized.

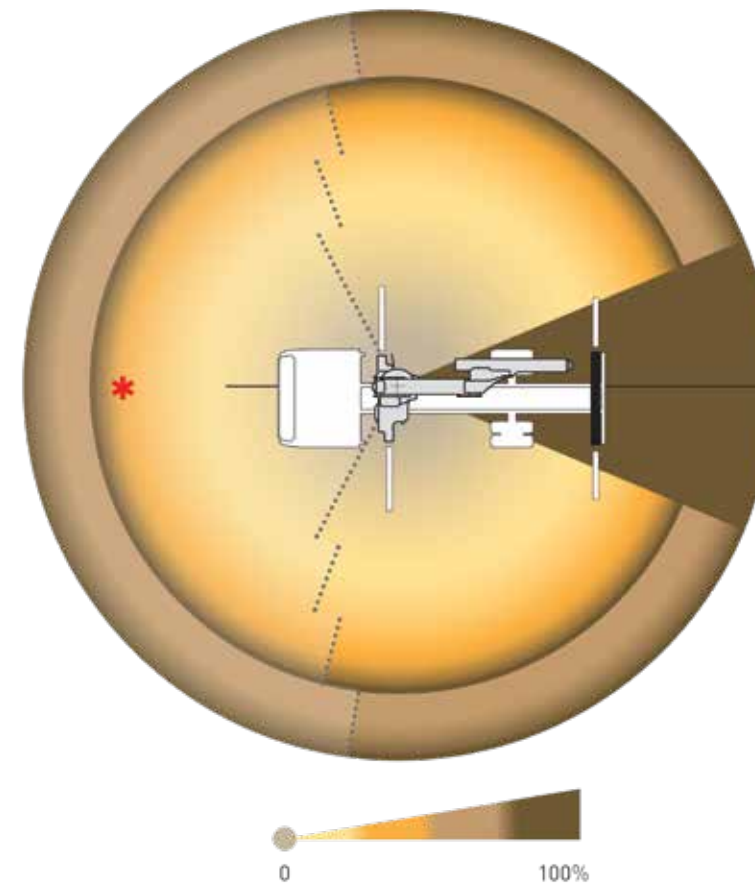
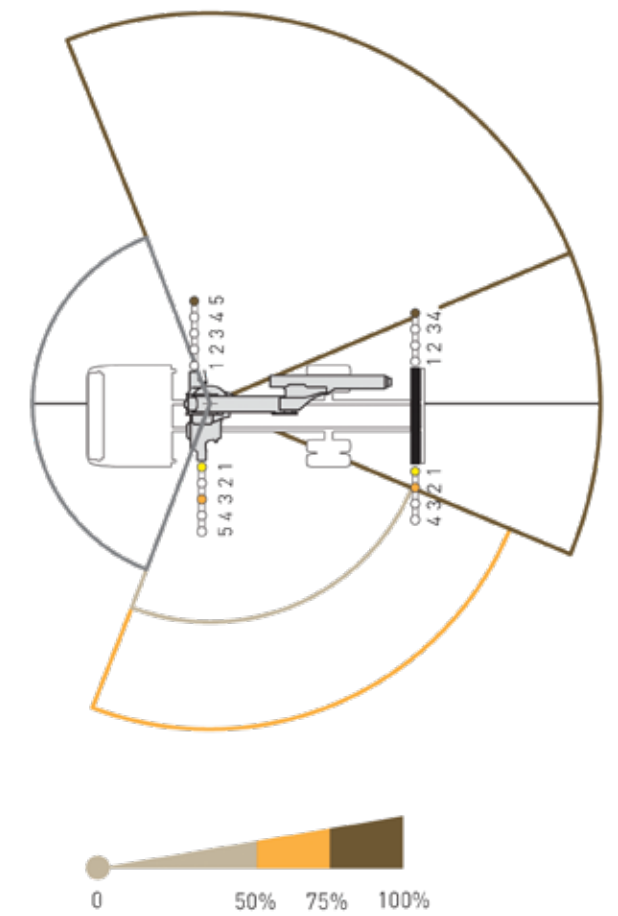
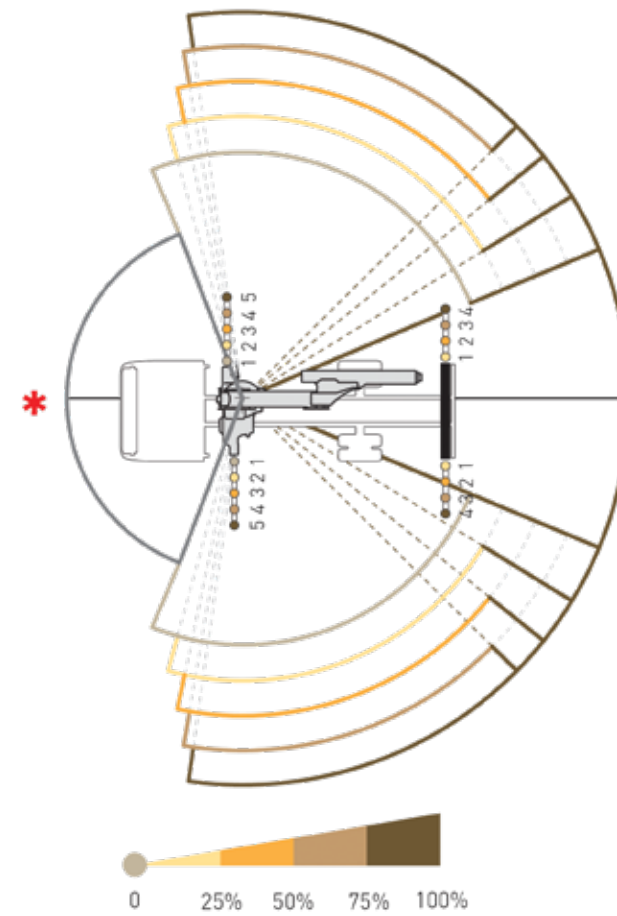
Manitex Stability Power System 5 Plus.

The 5 Plus safety system is the advanced version of the type 5, with an active stability control system based on a vehicle planarity. This ensures a maximum lifting capacity without having the outriggers booms fully extended (external lines on diagram).



MAXIMUM
LOAD

MAXIMUM
SAFETY



◀ In this page are shown some examples. The system is able to calculate the best load curve in relation to the actual stability.

JIBS

Jibs with up to 5 hydraulic extensions with a negative angle of 20°.

JIBS AVAILABLE WITH UP TO FIVE HYDRAULIC EXTENSIONS. NEGATIVE ANGLE OF 20°. THEY OFFER MAXIMUM OPERATING FLEXIBILITY IN DIFFICULT ACCESS CONDITIONS.

They are manufactured with special steel to guarantee maximum resistance and lightness, which translate into greater load capacity.

The automatic extension lock system guarantees maximum safety of crane in stored position.

Electronic JMP function.

The JMP (JIB Multi Power) control system optimises the jib's through dynamic variation of the maximum pressure. The jib always works with the maximum pressure possible in relation to the crane's geometric configuration.

Regenerative valve.

For greater extension speed.

JIB Multi Power Plus (optional).

In addition to the JMP functionality, the crane can have the device that optimizes the jib capacity.

Once activated, JMP Plus allows to optimize the exit of the booms that will give maximum performance.

In this way the jib can guarantee maximum capacity, in order to lift **big loads at maximum reach.**

OPERATING FLEXIBILITY	MAXIMUM PERFORMANCE	MAXIMUM SAFETY
--------------------------	------------------------	-------------------



EQUIPMENT



Standard Equipment.

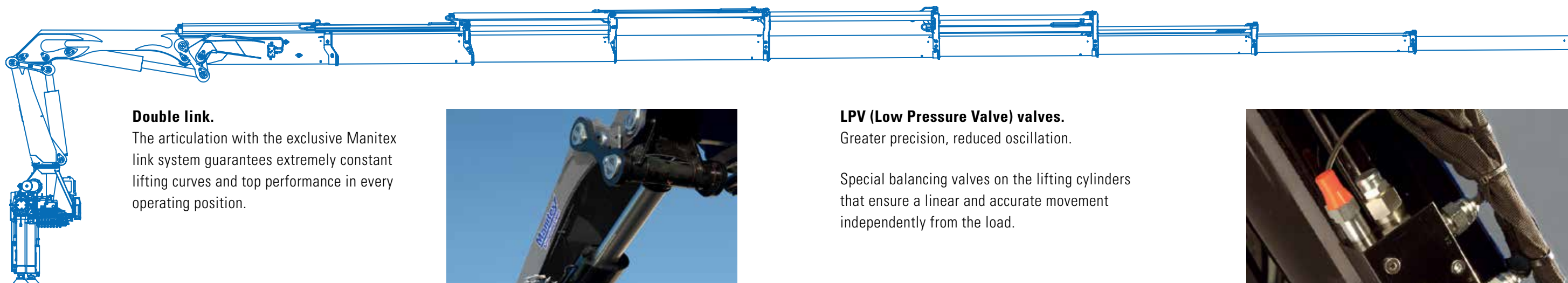
Rack. Slewing up to 410°.

Rack and pinion rotation system. The rack sliding pad does not require any external adjustment. The bushings, made of wear resistant material, have low friction characteristics and guarantee a high level of reliability and reduced maintenance operations.



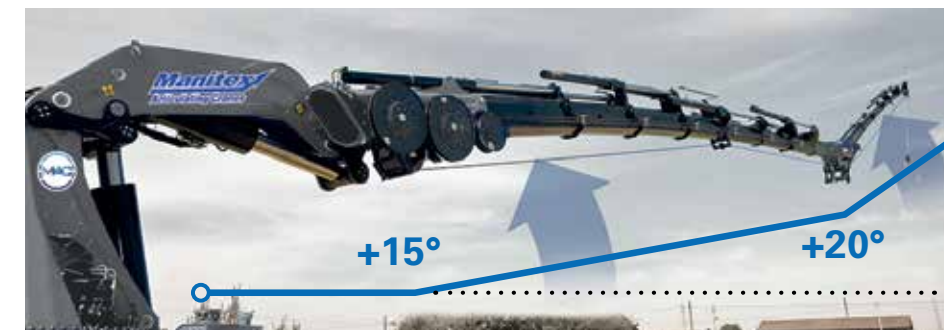
Proportional valve block with compensated flow for all movements.

Greater fluidity and control when different manoeuvres are performed at the same time.



Double link.

The articulation with the exclusive Manitex link system guarantees extremely constant lifting curves and top performance in every operating position.



Outer boom and fly jib upward angle.

Wider operating radius in constrained working areas.

Outer boom with extra upwards 15° angle and jibs with extra upward angle of 20°. They minimise unwanted flexions of the hydraulic extensions, ensuring perfect control of the load in every working position. They increase the operating radius in areas where the space is reduced.

Reach Versatility.

Get to those tough to reach spots with a wider operating radius.

LPV (Low Pressure Valve) valves.

Greater precision, reduced oscillation.

Special balancing valves on the lifting cylinders that ensure a linear and accurate movement independently from the load.



EQUIPMENT

Optional.



Winch.

An electronically controlled winch with a lifting capacity of 5,512 lbs. (2,500 kg) can be fitted on the crane, even with winch wire rope transmitted to the jib. An electronically controlled winch with a lifting capacity of 2,205 lbs. (1,000 kg) can be fitted on the jib.

EASY
TO FOLD

SAVES
TIMES



180° hydraulic swing up outriggers.

The outrigger cylinders can swing 180° upwards without increasing the crane's size.

180°

HYDRAULIC
SWING-UP



Supplementary activation.

Supplementary functions such as jibs or other hydraulic accessories can be hydraulically activated on boom.



High efficiency LED work lights.

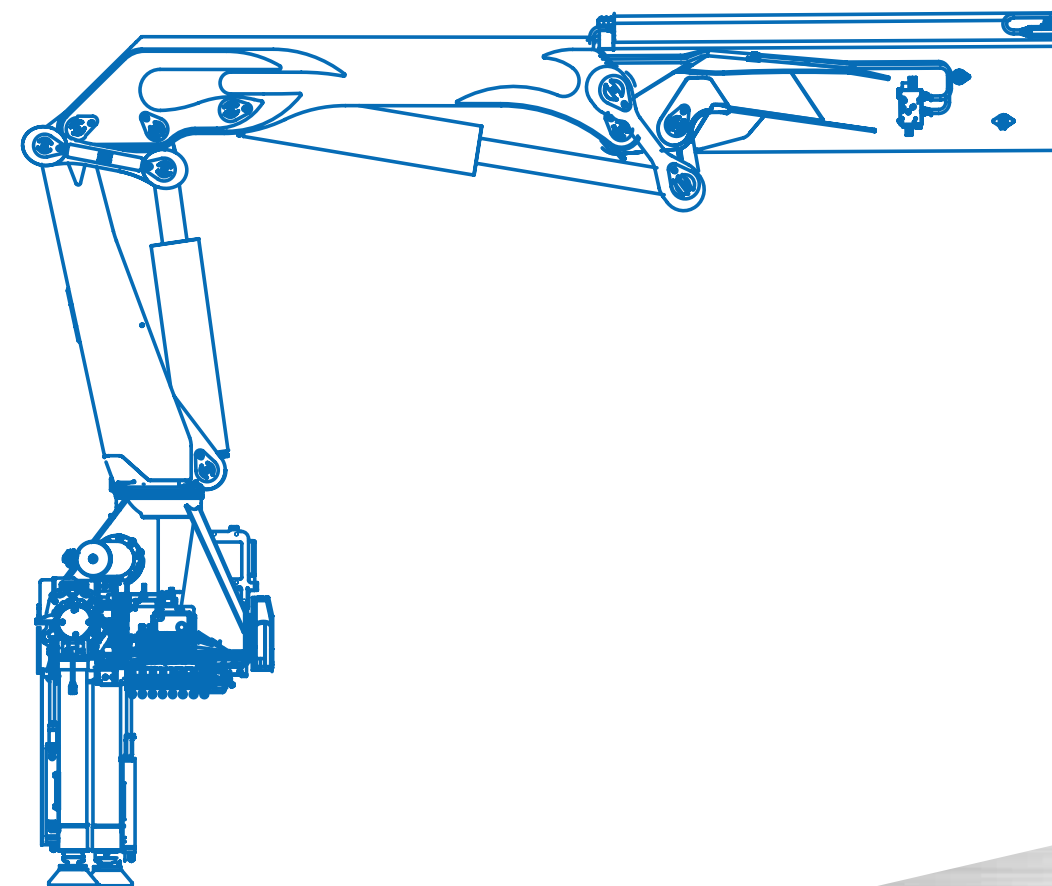
High power and low energy usage.

Anti-corrosion protection systems.

In particularly difficult weather conditions and for specific uses of the crane (e.g. 24/24 h jobs, on snowploughs, in mines or quarries, in marine areas etc.), all components the parts of the crane which are mostly exposed to corrosion (such as extension arms, rods, pins, ring nuts, etc.) can be protected using two possible protection systems.

- **Type A system:** parts exposed to corrosion are treated with zinc-based primer and special two-component glazes. This type of treatment increases by 100% the resistance to corrosion of the part compared to the same part untreated.

- **Type B system:** parts exposed to corrosion are treated with a layer of primer and paint. This increases by 50% the resistance to corrosion of the components compared to the same part untreated.



EQUIPMENT

Optional (cont.)



LC (Long/Short) Telescopic System.

LC version, with first hydraulic retractable boom, optimizes the load positioning close to the column, and makes easy the placement of heavy and bulky loads.



Remote controlled outriggers and MCS system.

Crane's outriggers and supplementary outriggers additional ones are controlled using a bilateral control levers or remote control. This stability system guarantees greater speed, safety and efficiency during crane's start.

EQUIPMENTS

	STANDARD	OPTIONAL
Slewing by rack	●	
Double Linkage	●	
Hydraulic outriggers	●	
Oil cooler	●	
Multifunction Radio Remote Control	●	
Proportional compensated load sensing control valve bank	●	
Safety kit for outriggers	●	
Fly jib		●
Crane hydraulic winch		●
Fly jib hydraulic winch		●
Slewing limiter		●
Electronic slewing lock valve with variable setting		●
Hose reels		●
Hose trays		●
Manual extensions		●
Oil tank		●
LMU device: control system for manual extensions*	●	●
LC version		●
LED work lamp		●

* compulsory for CE area

CERTIFICATION



In accordance to EU safety standards.



3 years warranty on the structural parts.



Quality certification UNI EN ISO 9001:2008

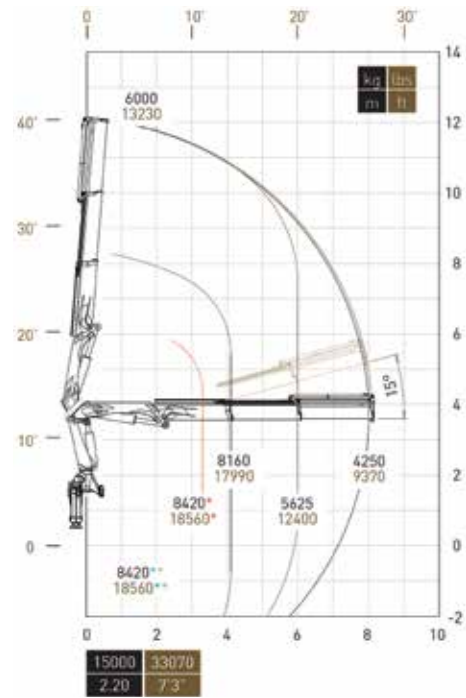


In accordance to HD5S2 standard.

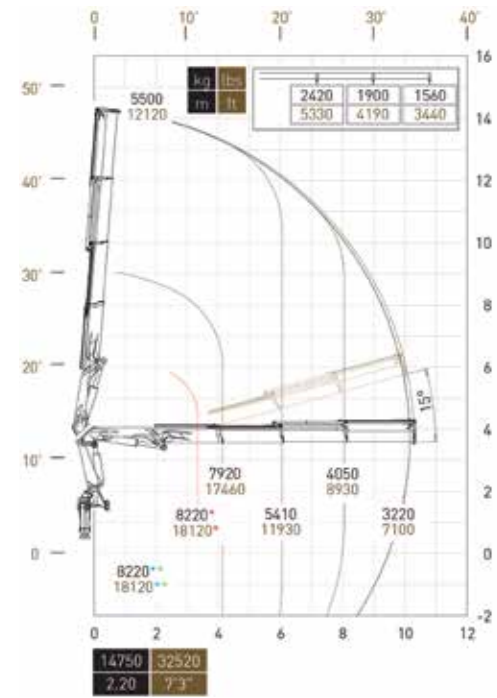
CONFIGURATIONS

Standard Crane.

38522 SP

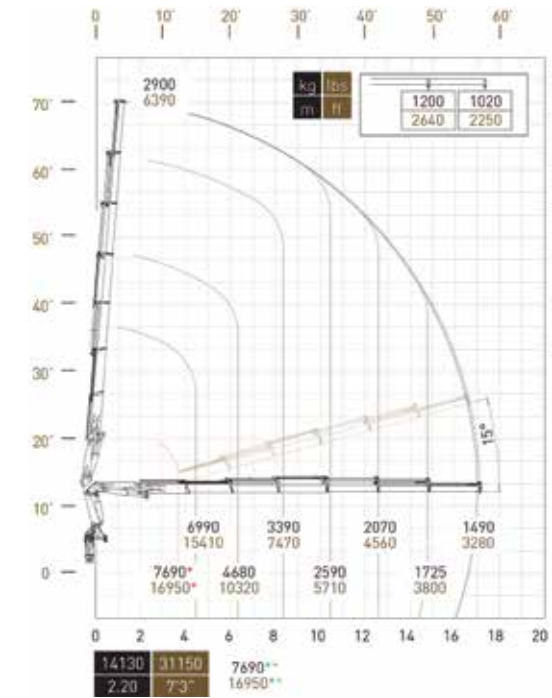


38523 SP

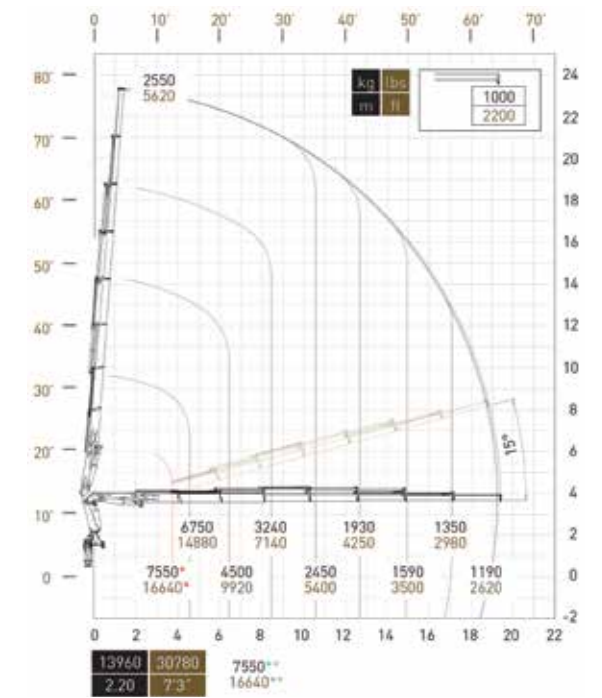


Standard Crane.

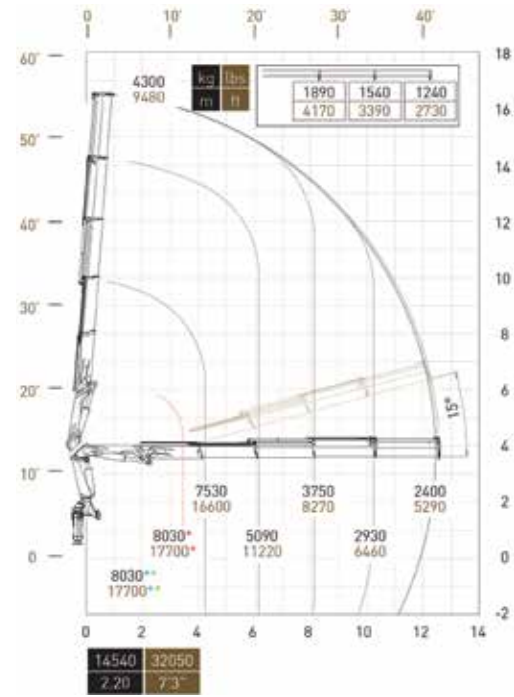
38526 SP



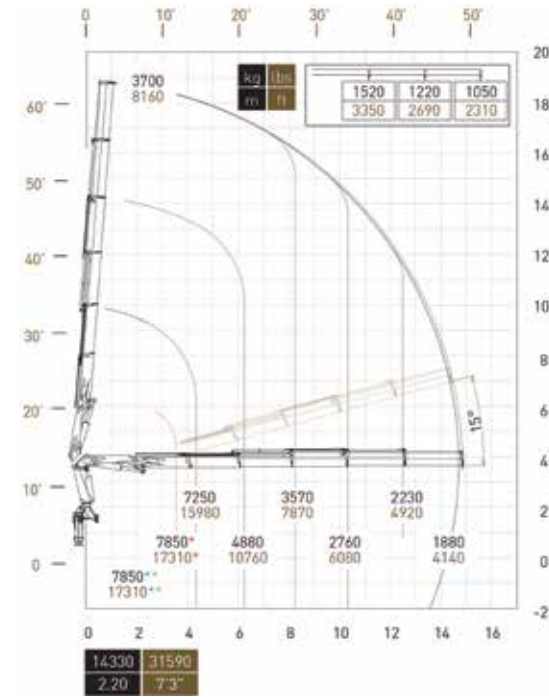
38527 SP



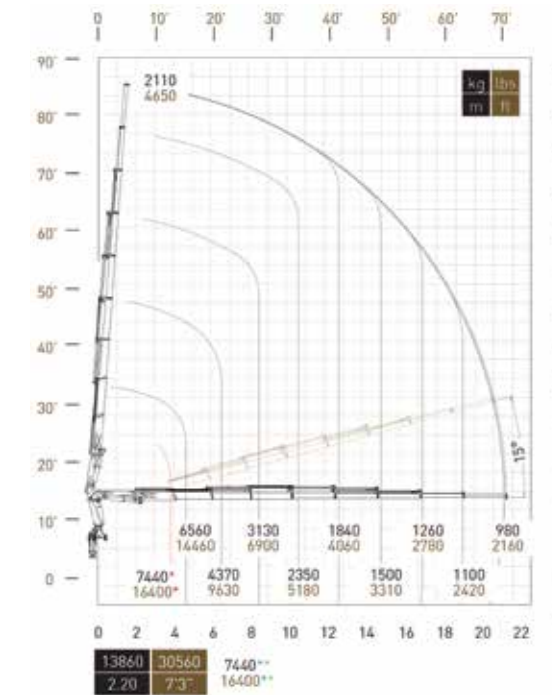
38524 SP



38525 SP



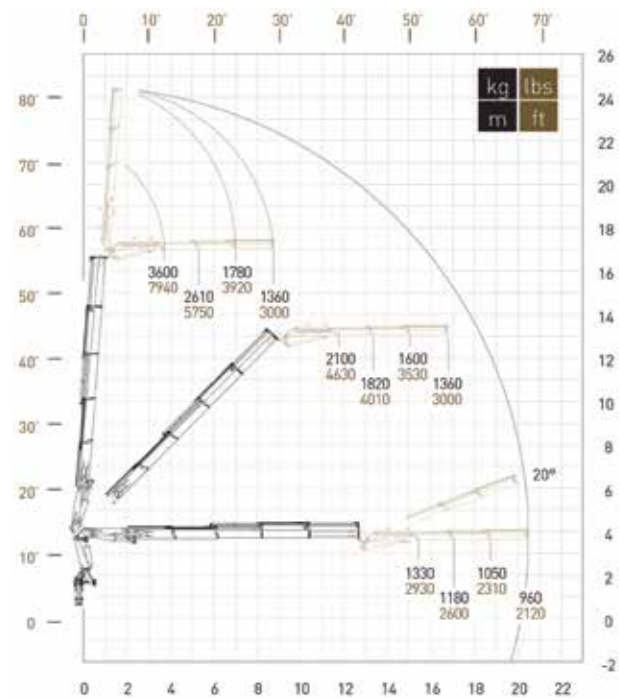
38528 SP



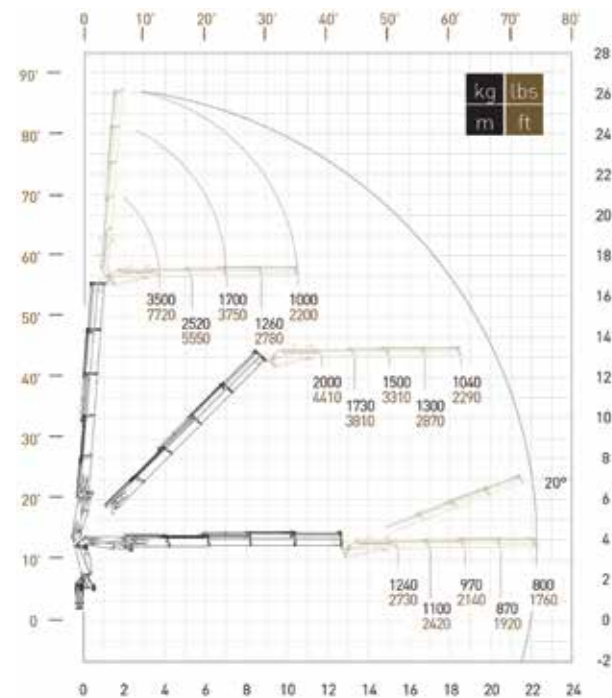
CONFIGURATIONS

With Jib.

38524 SP + J1113.20

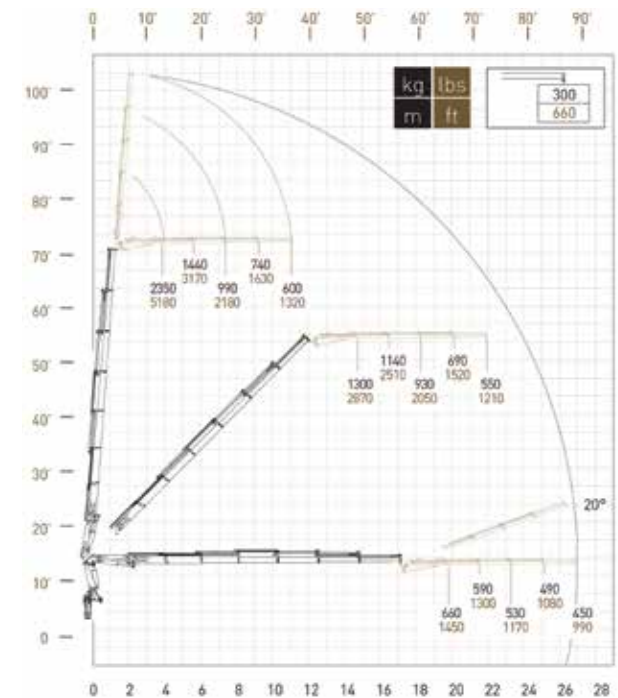


38524 SP + J1114.20

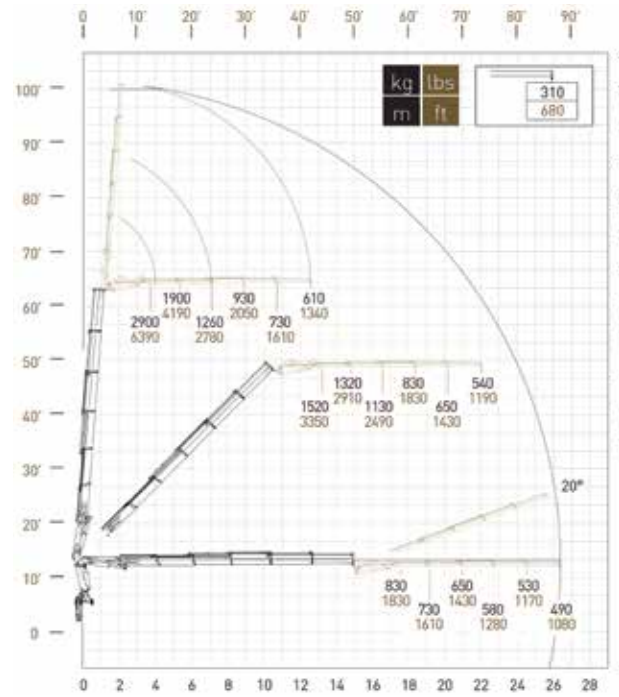


With Jib.

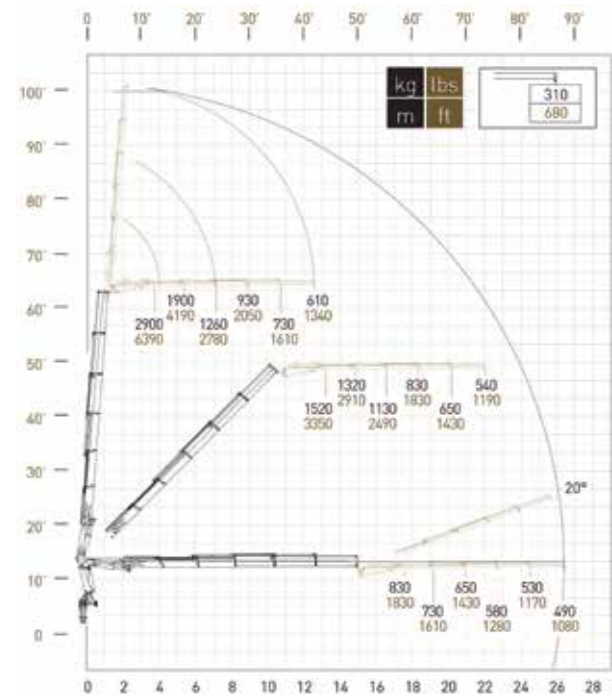
38526 SP + J614.20



38525 SP + J814.20



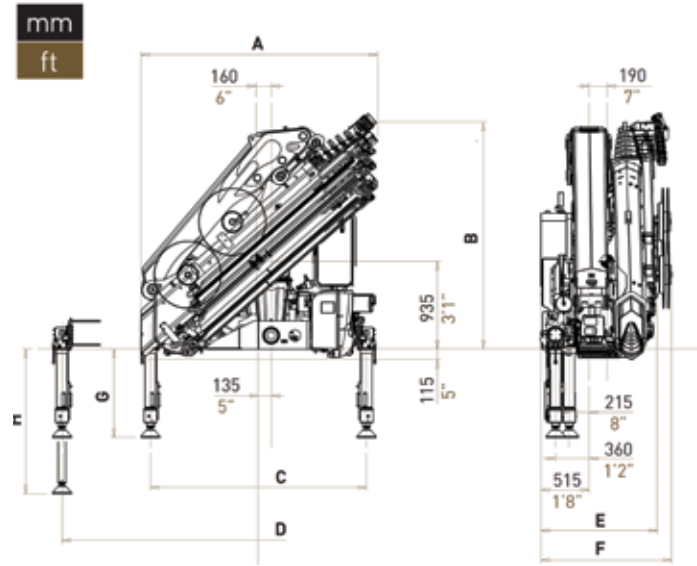
38525 SP + J815.20



DIMENSIONS

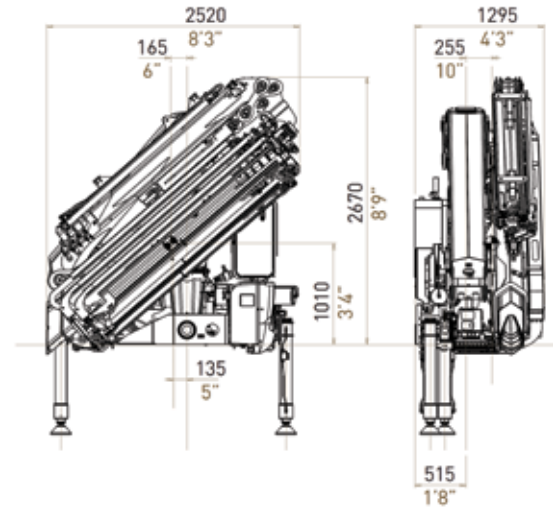
Standard Crane.

38.5 SP



With Jib.

38.5 SP

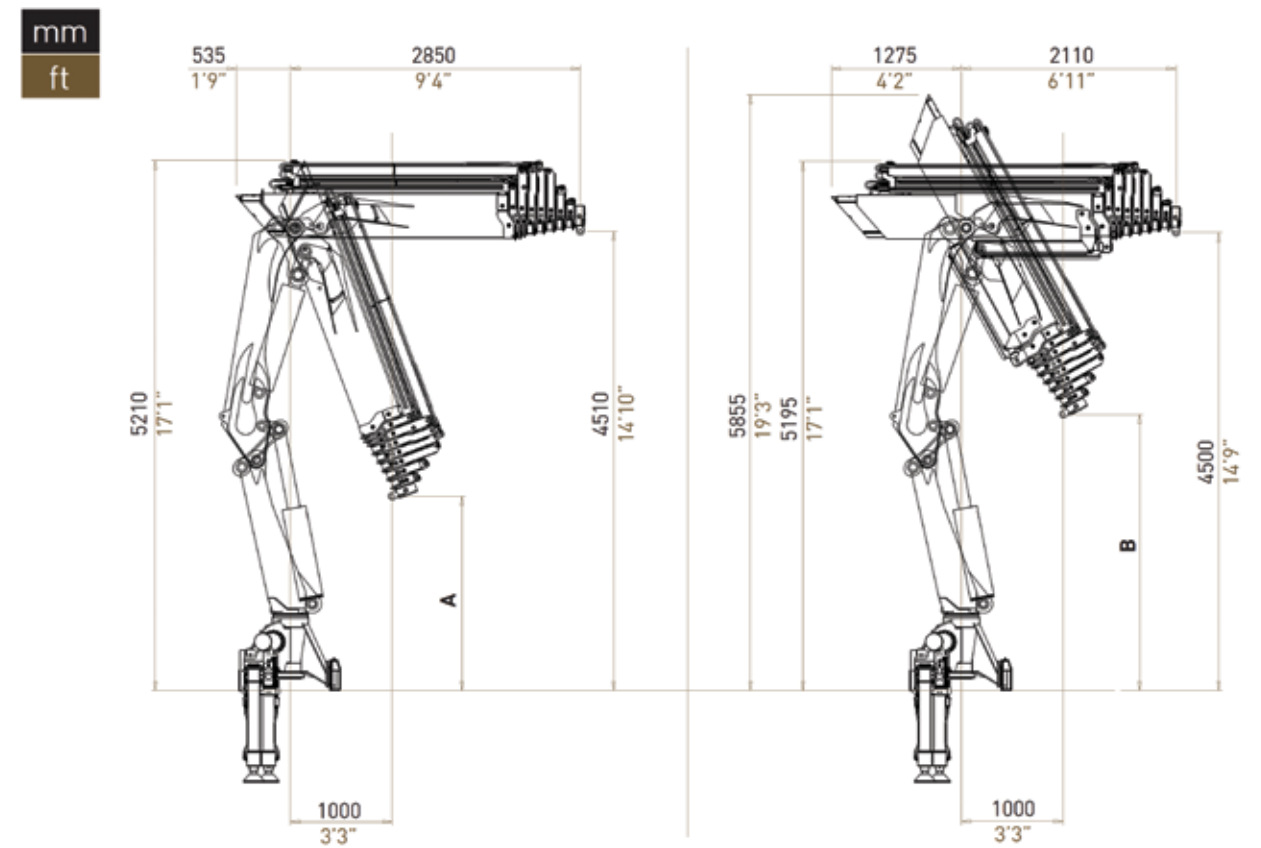


DIMENSIONS

Dimensions		38522	38523	38524	38525	38526	38527	38528	Fix	Fix A	Fix B	Rot	STD	STD+ROT	XL	XL+ROT	SXL	SXL+ROT
A	ft	8'2"	8'2"	8'2"	8'3"	8'3"	8'3"	8'3"	-	-	-	-	-	-	-	-	-	-
B	ft	7'9"	7'9"	7'9"	7'9"	7'9"	7'9"	7'11"	-	-	-	-	-	-	-	-	-	-
C	ft	-	-	-	-	-	-	-	7'5"	-	-	7'7"	-	-	-	-	-	-
D	ft	-	-	-	-	-	-	-	-	-	-	-	17'11"	18'1"	21'6"	21'8"	24'1"	24'3"
E	ft	3'8"	3'8"	3'8"	3'10"	3'11"	4'	4'1"	-	-	-	-	-	-	-	-	-	-
F	ft	4'4"	4'4"	4'4"	4'4"	4'4"	4'7"	4'7"	-	-	-	-	-	-	-	-	-	-
G	ft	-	-	-	-	-	-	-	-	2'10"	2'11"	3'1"	-	-	-	-	-	-
H	ft	-	-	-	-	-	-	-	-	4'9"	4'11"	5'1"	-	-	-	-	-	-

Working positions.

38.5 SP



DIMENSIONS

Dimensions			38522	38523	38524	38525	38526	38527	38528
A	STD	mm	7'6"	7'11"	7'8"	7'3"	6'11"	6'8"	6'3"
B	LC	mm	10'3"	10'9"	10'4"	10'	9'8"	9'3"	8'9"



UPTIME is the Manitex
commitment to complete
support of thousands of units
working every day.

MANITEX
3000 South Austin Avenue
Georgetown, Texas 78626
1-877-314-3390 | www.Manitex.com



MANITEX
ARTICULATING CRANES