



MANITEX

ARTICULATING CRANES



PRODUCT
OVERVIEW

65 SP

PLATINUM
SERIES

POWER TRONIC ADVANCE

Electronic control for great performance.

Maximum lifting power.

The crane's activity is constantly monitored by the electronic control and all the management modes of the control system are shown on the graphic display. The dynamic load control allows the operator to utilize full performance easily and in total safety.

Real time diagnostics.

The onboard computer (multitasking), with operating system that can manage millions of operations per second, guarantees immediate response from the machine, facilitating greater control and productivity.

Graphic display.

Larger, more visible, and with more information.

CANBUS 2.0 data transmission protocol.

Remote support.

The operating system is configured for remote diagnostics and support.

E-FLOWSHARING function.

The optimized management of the movements ensures greater fluidity and control in the case of multiple maneuvers — like lifting, extending and rotating at the same time. As a result, this function increases the crane's efficiency.



GREATER CONTROL

GREATER SPEED



RADIO REMOTE CONTROL.

Frequency jumping.

The frequency jumping data transmission system constantly changes the transmission frequency, reducing to a minimum any interruption caused by electromagnetic interferences, guaranteeing the performance of the crane.

Large backlit display.

It offers good visibility even when working at night.

Bi-directional communication.

The operator's controls are translated into visual feedback on the display: lifting percentage, pressure values, work angles, etc. The same information is shown on the Power Tronic's main display.



STABILITY POWER SYSTEM

Maximum control,
maximum safety.

Stability control system.

The crane's lifting capacity and extension are always defined in relation to the truck's stability. In this way, the crane can be operated safely, optimizing performance.

The Stability Power System is available in different versions, designed to meet specific operating requirements.

The Stability Power System is mandatory for EC markets.

Visible safety.

Information on the actual extension of the outriggers and the position on the ground of each outrigger cylinder are shown on the Power Tronic Advance's display and on the MCS display.

Manitex Stability Power System

*With front outriggers, the load capacity over the cab can be maximized.

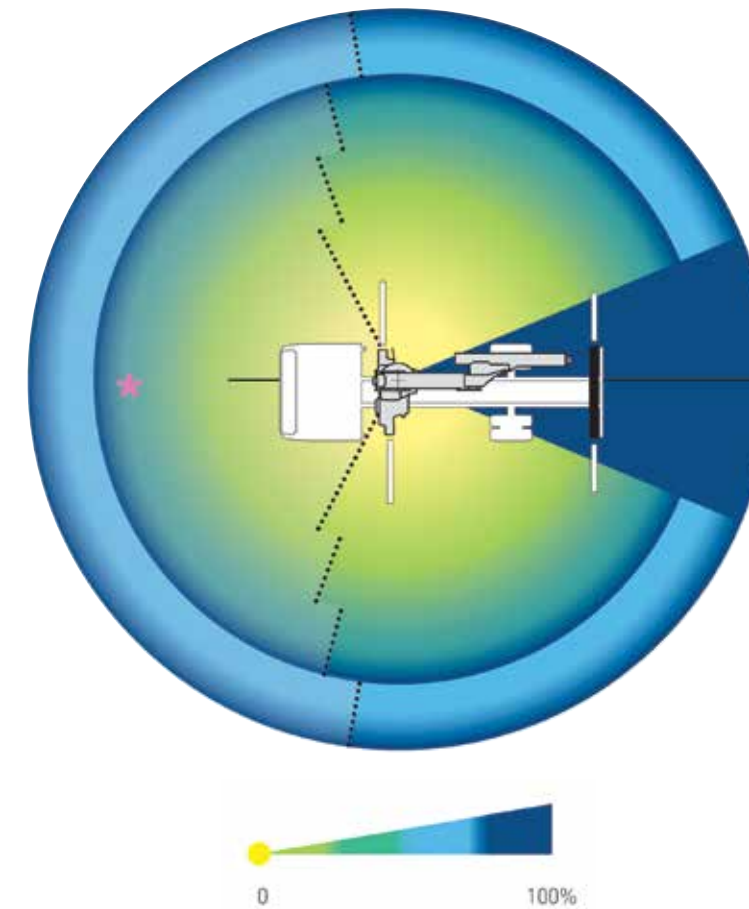
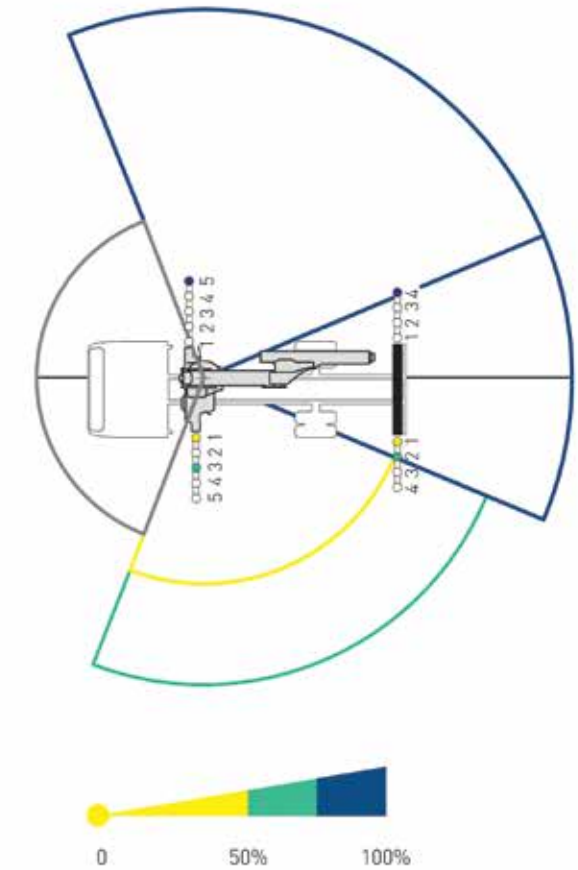
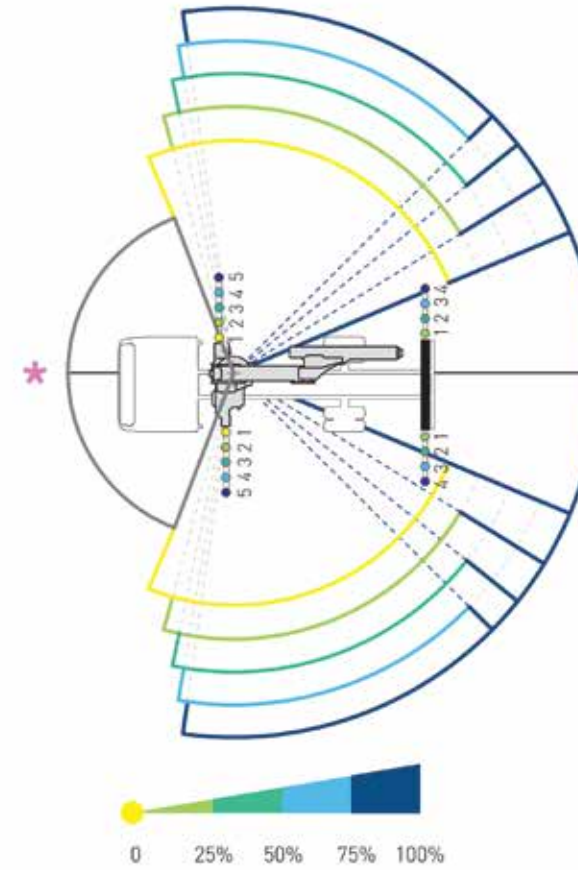
Manitex Stability Power System 5 Plus.

The 5 Plus safety system is the advanced version of the type 5, with an active stability control system based on vehicle planarity. This ensures a maximum lifting capacity without having the outriggers' booms fully extended. (blue lines on diagram)



MAXIMUM
LOAD

MAXIMUM
SAFETY



◀ On this page are some examples. The system is able to calculate the best load curve in relation to the actual stability.

JIBS

Jibs with up to 6 hydraulic extensions with a negative angle of 20°.

JIBS WITH DOUBLE CYLINDER LINKS ARE AVAILABLE WITH UP TO SIX HYDRAULIC EXTENSIONS. NEGATIVE ANGLE OF 20°. THEY OFFER MAXIMUM OPERATING FLEXIBILITY IN DIFFICULT ACCESS CONDITIONS.

They are manufactured with special steel to guarantee maximum resistance and lightness, which translate into greater load capacity.

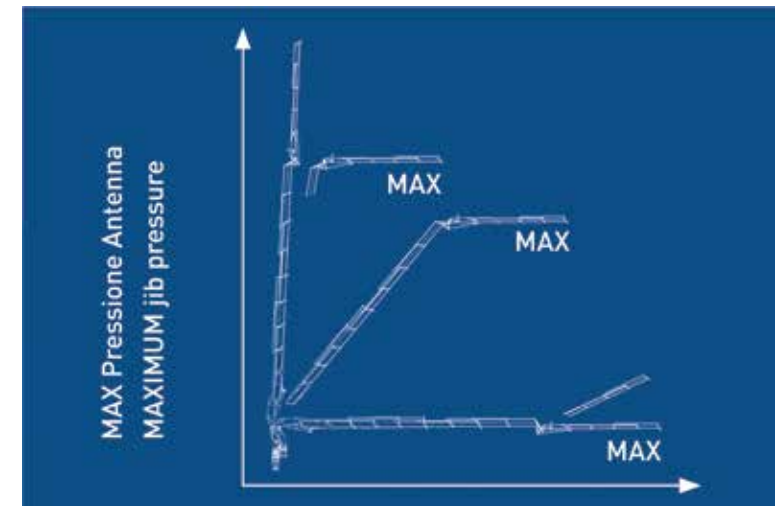
The automatic extension lock system guarantees maximum safety of the crane in stored position.

Electronic JMP function.

The JMP (Jib Multi Power) control system optimizes the jib through dynamic variation of the maximum pressure. The jib always works with the maximum pressure possible in relation to the crane's geometric configuration.

Regenerative valve.

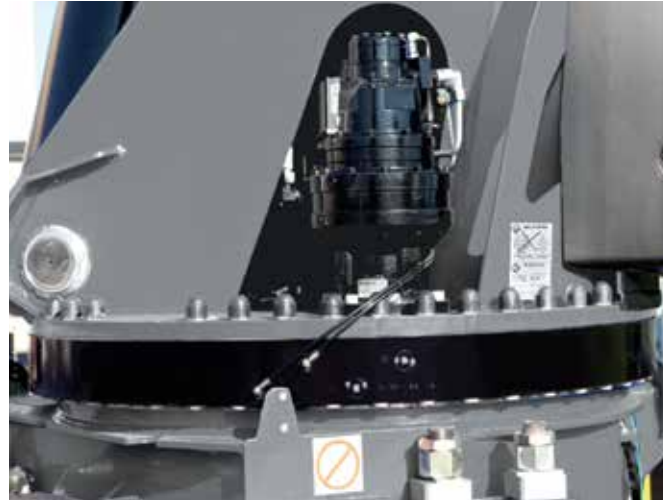
For greater extension speed.



- OPERATING FLEXIBILITY
- MAXIMUM PERFORMANCE
- MAXIMUM SAFETY

EQUIPMENT

Standard Equipment.



Continuous rotation system provides big flexibility.

The rotation system is designed for intensive use with a high number of work cycles. It guarantees safety and efficiency at all times.

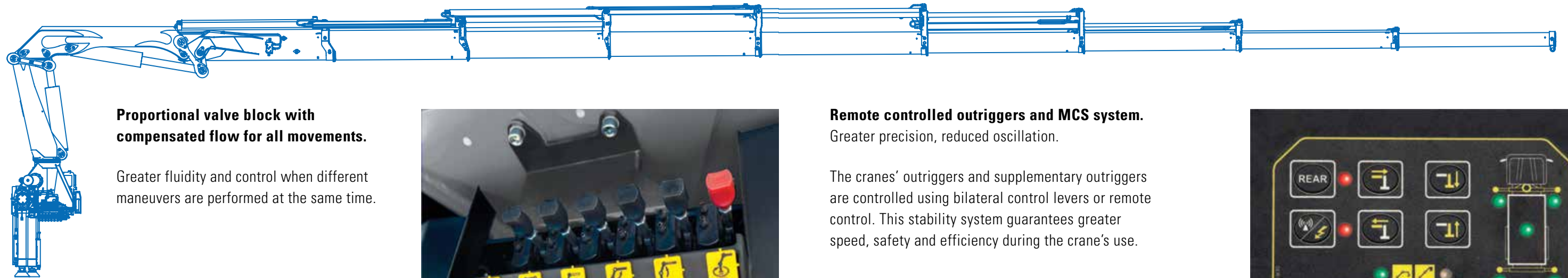
Rotation system with 2 gear motors. Greater rotation sensitivity and torque.

The PUSH-PULL system, which controls the rotation gear motors, reduces any mechanical coupling clearance, ensuring an extremely precise rotation, without oscillation, even during the maneuver's start and stop phases.

LPV (Low Pressure Valve) valves.

Greater precision, reduced oscillation.

Special balancing valves on the lifting cylinders ensure a linear and accurate movement independently of the load.



Proportional valve block with compensated flow for all movements.

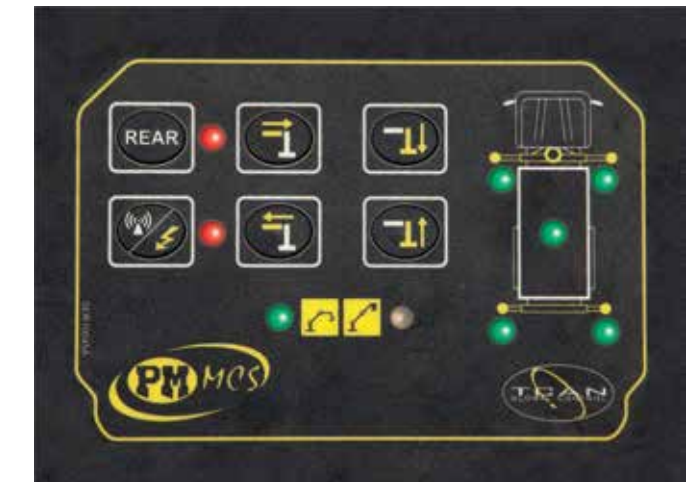
Greater fluidity and control when different maneuvers are performed at the same time.



Remote controlled outriggers and MCS system.

Greater precision, reduced oscillation.

The cranes' outriggers and supplementary outriggers are controlled using bilateral control levers or remote control. This stability system guarantees greater speed, safety and efficiency during the crane's use.



EQUIPMENT

Optional.



Winch.

An electronically controlled winch with a lifting capacity of 8,377 lbs. (3,800 kg) can be fitted on the crane. It is equipped with winch wire rope for transmission to the jib.

EASY
TO FOLD

SAVES
TIMES



180° hydraulic swing up outriggers.

The outrigger cylinders can swing 180° upward without increasing the crane's size.

180°

HYDRAULIC
SWING-UP



Supplementary activation.

Supplementary functions such as jibs or other hydraulic accessories can be hydraulically activated on boom.



High efficiency LED work lights.

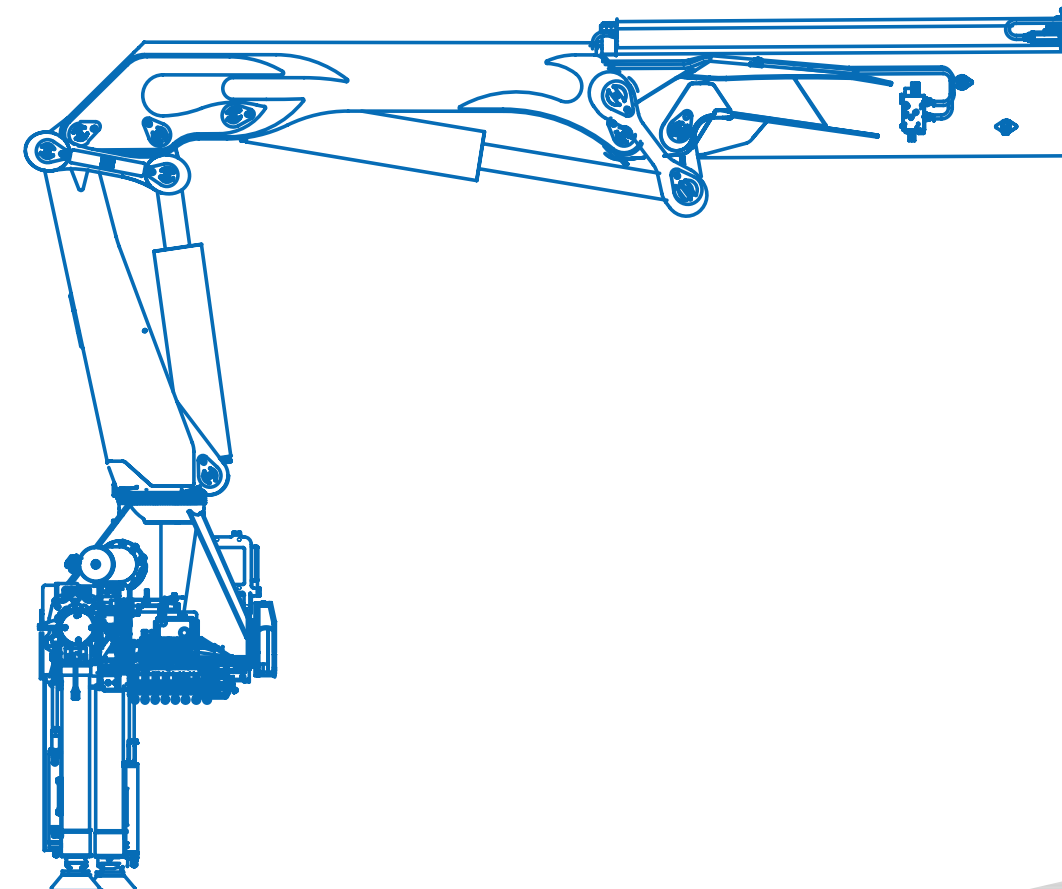
High power and low energy usage.

Anti-corrosion protection systems.

In particularly difficult weather conditions and for specific uses of the crane (e.g. 24/24 jobs, on snowplows, in mines or quarries, in marine areas, etc.) all components of the crane which are exposed to corrosion (such as extension arms, rods, pins, ring nuts, etc.) can be protected using one of two possible protection systems.

- **Type A system:** Parts exposed to corrosion are treated with zinc-based primer and special two-component glazes. This treatment reduces corrosion by 100% compared to the same part untreated.

- **Type B system:** Parts exposed to corrosion are treated with a layer of primer and paint. This reduces corrosion by 50% compared to the same part untreated.





CERTIFICATION

EN12999

In accordance to EU safety standards.

3

3 years warranty on the structural parts.

ISO

Quality certification UNI EN ISO 9001:2008

H1-B3

In accordance to H1-B3 standard.

PQS

Certified painting system.

EQUIPMENTS

	STANDARD	OPTION
Continuous slewing	•	
Double Linkage	•	
Hydraulic outriggers	•	
Oil cooler	•	
Multi-function Radio Remote Control	•	
Proportional compensated load sensing control valve bank	•	
Safety kit for outriggers		•
Fly jib		•
Crane hydraulic winch		•
Fly jib hydraulic winch		•
Slewing limiter		•
Electronic slewing lock valve with variable setting		•
Hose reels		•
Hose trays		•
Hydraulic swing-up outrigger legs		•
Manual extensions		•
Oil tank		•
LMU device: Control system for manual extensions*	•	•
LED work lamp		•

* compulsory for CE area

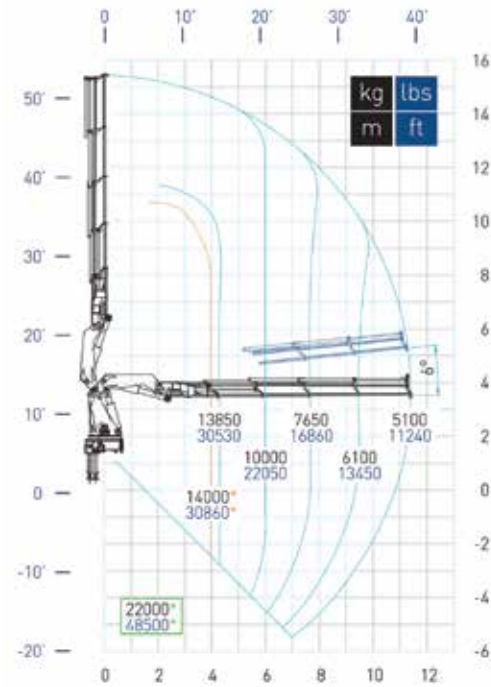


MANITEX
ARTICULATING CRANES

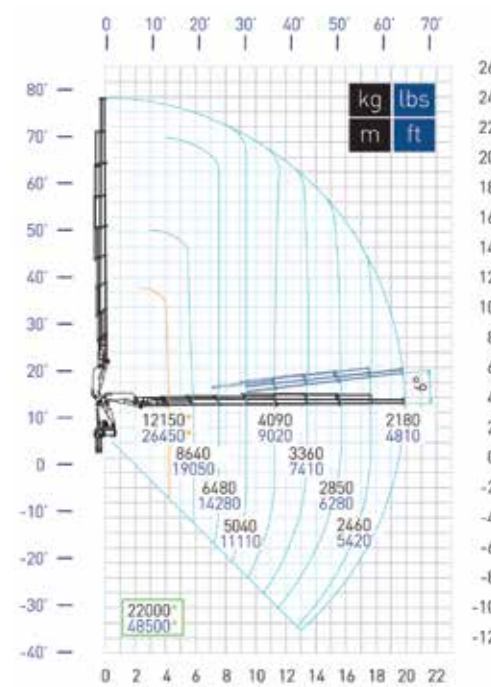
CONFIGURATIONS

Standard Crane.

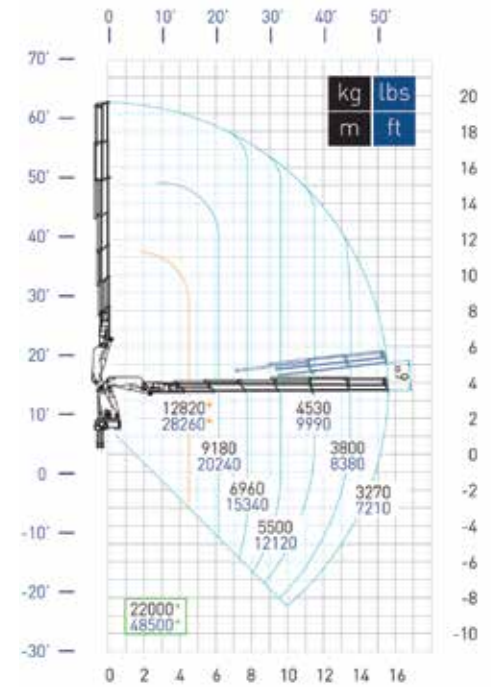
65024 SP



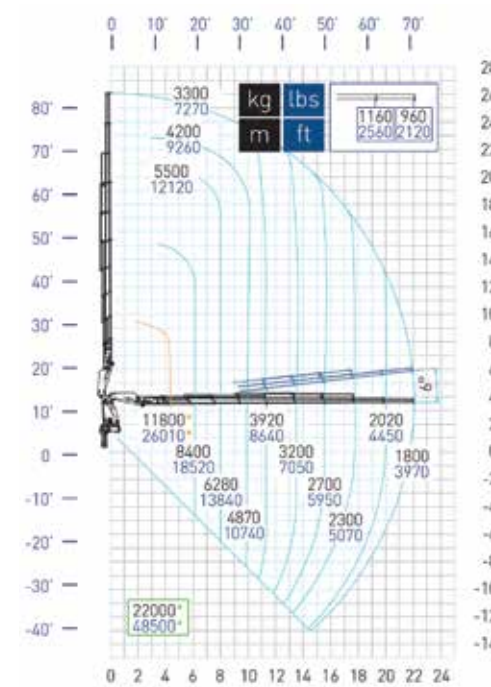
65028 SP



65026 SP



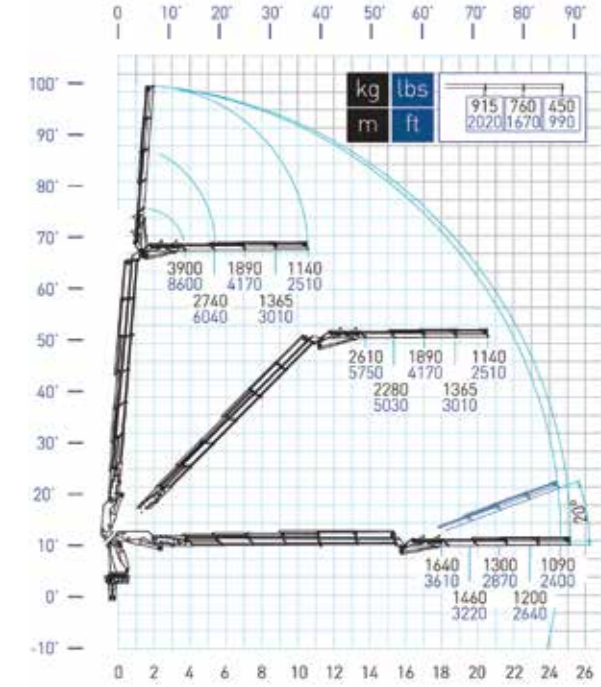
65029 SP



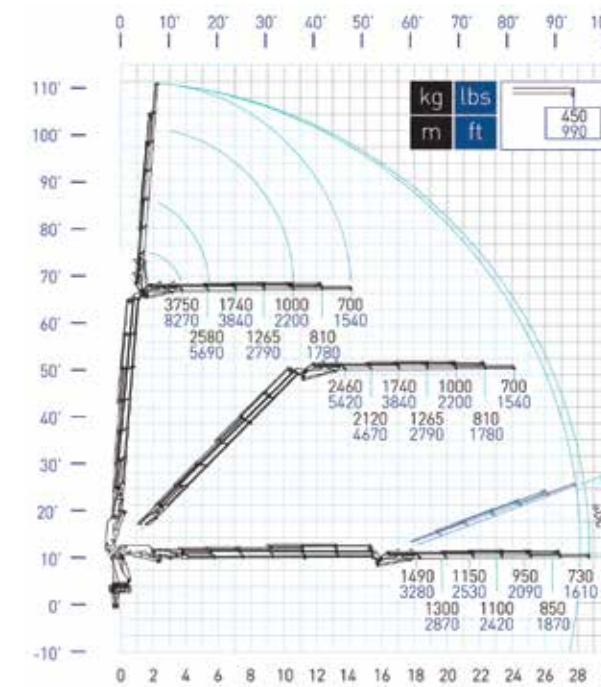
*Maximum capacity from horizontal to vertical. *Max. nominal capacity with fixed hook.

With Jib.

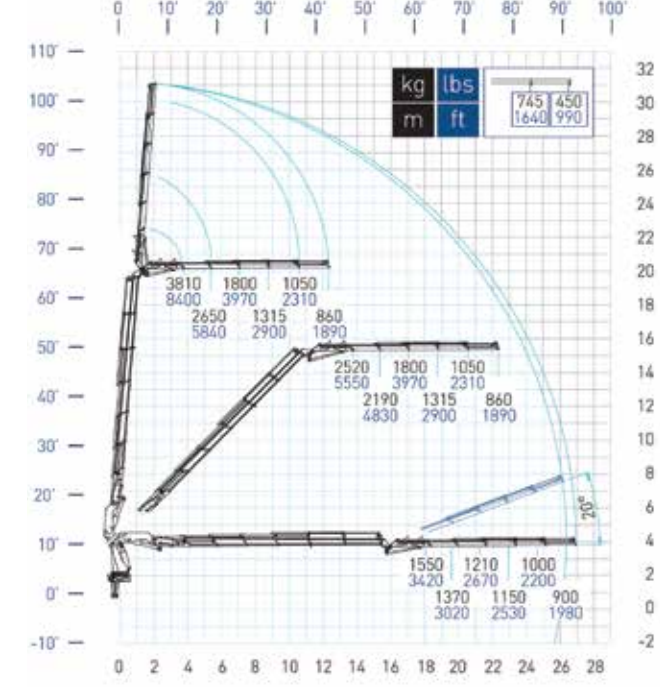
65026 SP + J1414.20



65026 SP + J1416.20



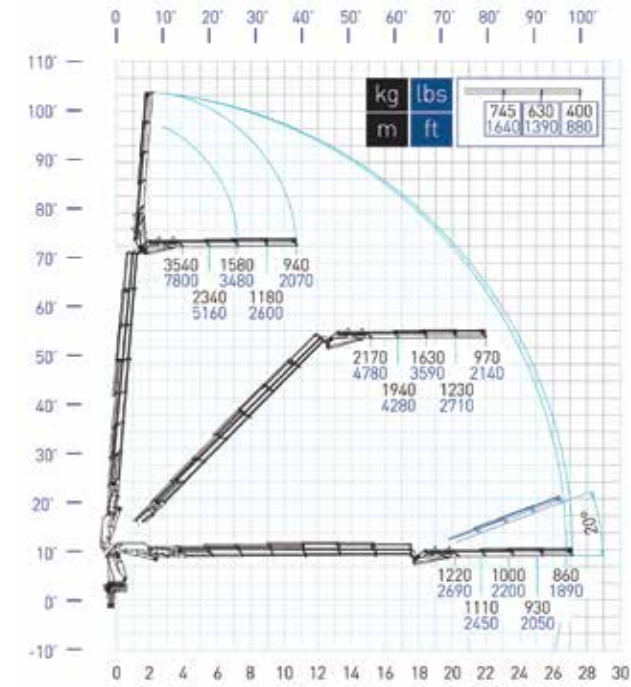
65026 SP + J1415.20



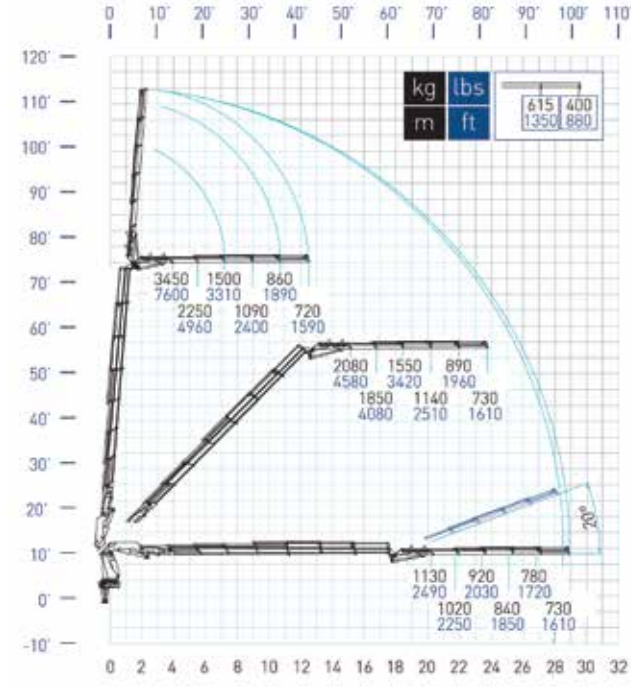
CONFIGURATIONS

With Jib.

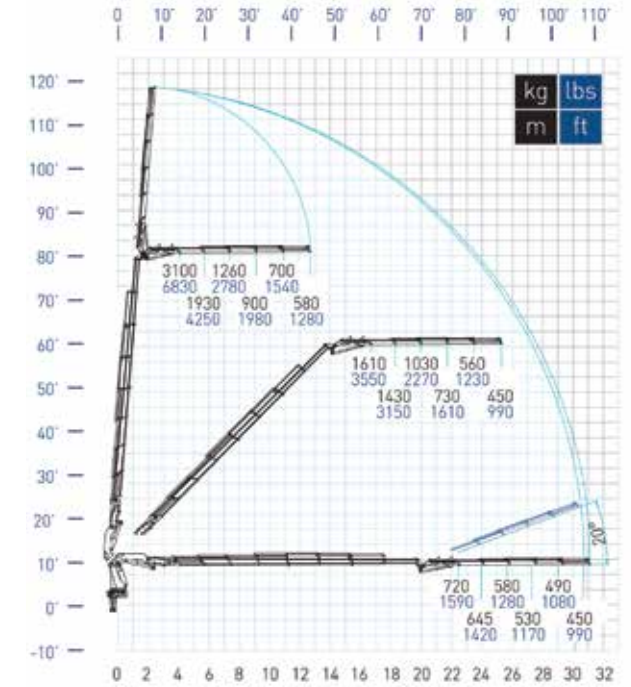
65027 SP + J1214.20



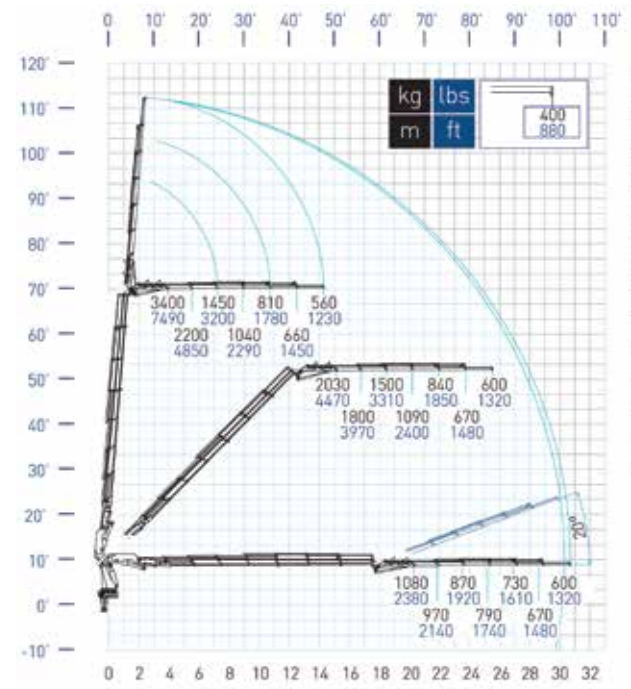
65027 SP + J1215.20



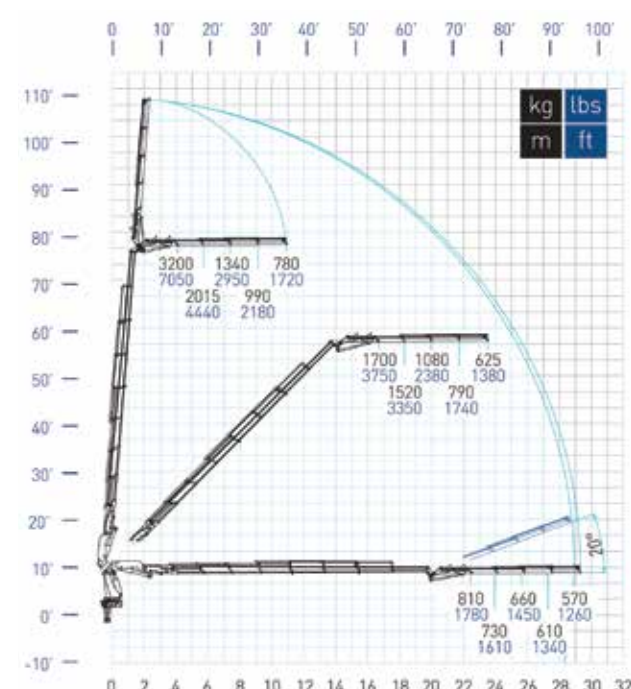
65028 SP + J 1215.20



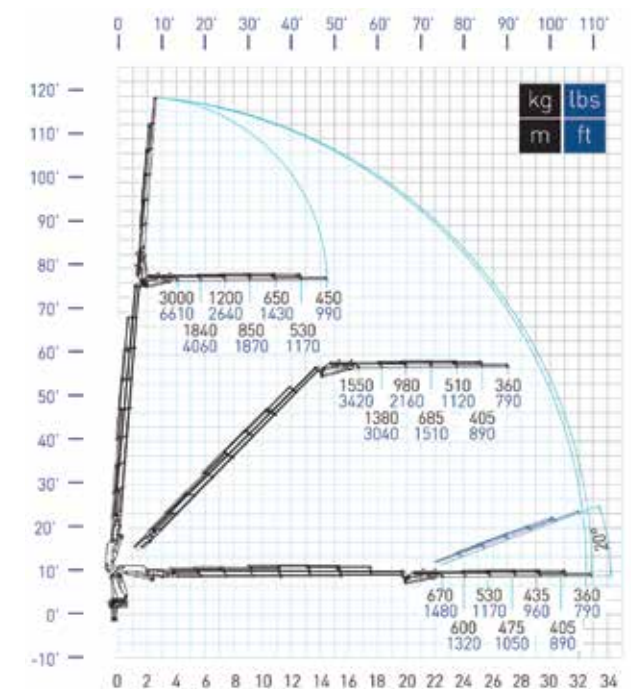
65027 SP + J1216.20



65028 SP + J 1214.20



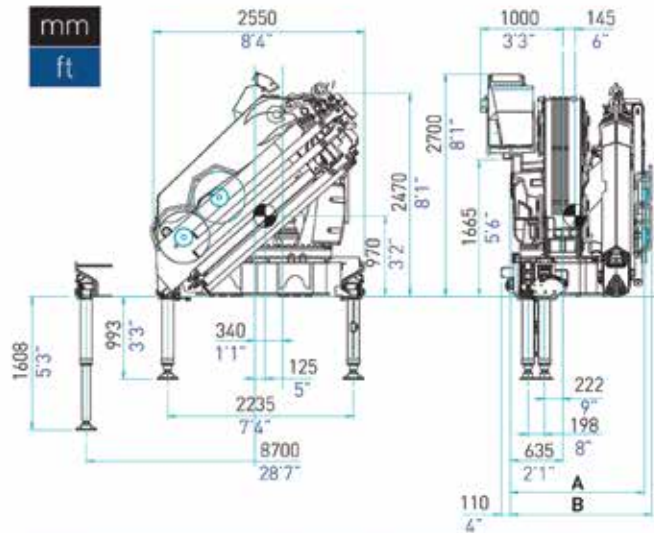
65028 SP + J 1216.20



DIMENSIONS

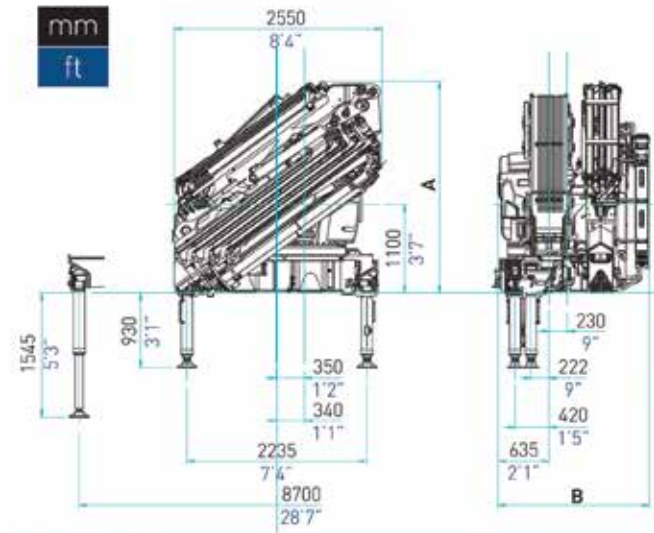
Standard Crane.

65 SP



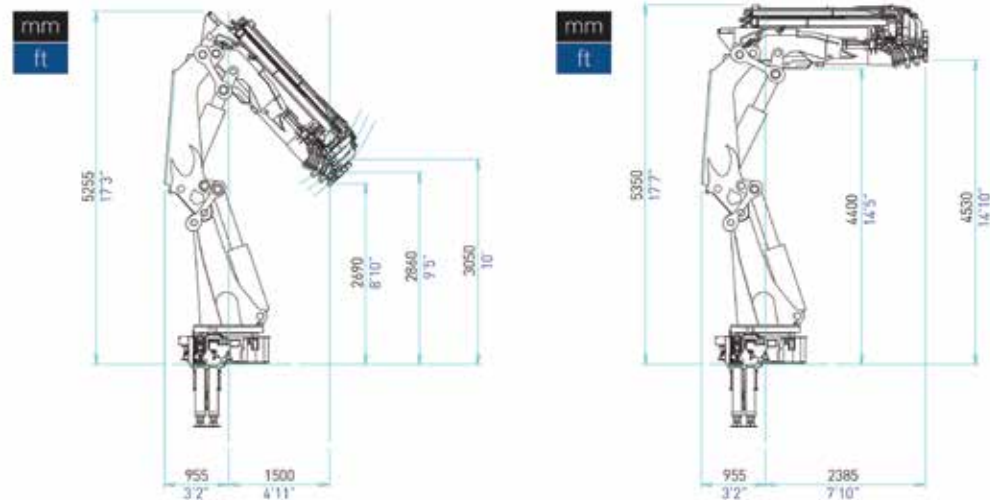
With Jib.

65 SP



Working positions.

65 SP



TECHNICAL INFORMATION

		65024	65026	65028	65029	65026 + J1414.20	65026 + J1415.20	65026 + J1416.20
Maximum lifting moment	ft/lbs	429640	408000	395470	392610	-	-	-
	tm	59.4	56.4	54.7	54.3	-	-	-
HYDRAULIC OUTREACH								
Horizontal	ft	37'1"	50'6"	64'8"	71'10"	81'0"	86'9"	92'8"
	m	11.33	15.4	19.7	21.9	24.7	26.45	28.25
Vertical	ft	50'2"	64'4"	78'5"	85'8"	96'2"	101'10"	107'9"
	m	15.3	19.6	23.9	26.1	29.3	31.05	32.85
HYDRAULIC SYSTEM								
Maximum oil flow	gals/min	21/26	21/26	21/26	21/26	21/26	21/26	21/26
	l/min	80/100	80/100	80/100	80/100	80/100	80/100	80/100
Maximum pressure	Psi	4570	4570	4570	4570	4570	4570	4570
	MPa	31.5	31.5	31.5	31.5	31.5	31.5	31.5
Oil tank capacity	gals	81	81	81	81	81	81	81
	l	305	305	305	305	305	305	305
SLEWING SYSTEM								
Slewing angle	°	Continuous	Continuous	Continuous	Continuous	Continuous	Continuous	Continuous
Slewing moment	ft/lbs	47940	47940	47940	47940	47940	47940	47940
	kN m	65	65	65	65	65	65	65
Maximum working heel	%(°)	8.7 (5)	8.7 (5)	8.7 (5)	8.7 (5)	0	0	0
STANDARD CRANE WEIGHT								
Without oil tank	lbs	13151	14220	15146	15576	16766	16909	17986
	kg	5965	6450	6870	7065	7605	7670	7750

		65027 + J1214.20	65027 + J1215.20	65027 + J1216.20	65028 + J1214.20	65028 + J1215.20	65028 + J1216.20
Maximum lifting moment	ft/lbs	-	-	-	-	-	-
	tm	-	-	-	-	-	-
HYDRAULIC OUTREACH							
Horizontal	ft	88'1"	93'10"	99'9"	95'2"	101'1"	106'11"
	m	26.85	28.6	30.4	29	30.8	32.6
Vertical	ft	102'0"	107'9"	113'8"	109'1"	114'12"	120'11"
	m	31.1	32.85	34.65	33.25	35.05	36.85
HYDRAULIC SYSTEM							
Maximum oil flow	gals/min	21/26	21/26	21/26	21/26	21/26	21/26
	l/min	80/100	80/100	80/100	80/100	80/100	80/100
Maximum pressure	Psi	4570	4570	4570	4570	4570	4570
	MPa	31.5	31.5	31.5	31.5	31.5	31.5
Oil tank capacity	gals	81	81	81	81	81	81
	l	305	305	305	305	305	305
SLEWING SYSTEM							
Slewing angle	°	Continuous	Continuous	Continuous	Continuous	Continuous	Continuous
Slewing moment	ft/lbs	47940	47940	47940	47940	47940	47940
	kN m	65	65	65	65	65	65
Maximum working heel	%(°)	0	0	0	0	0	0
STANDARD CRANE WEIGHT							
Without oil tank	lbs	17185	17328	17516	17571	17714	17891
	kg	7795	7860	7945	7970	8035	8115



UPTime is the Manitex
commitment to complete
support of thousands of units
working every day.

MANITEX
3000 South Austin Avenue
Georgetown, Texas 78626
1-877-314-3390 | www.Manitex.com



MANITEX
ARTICULATING CRANES