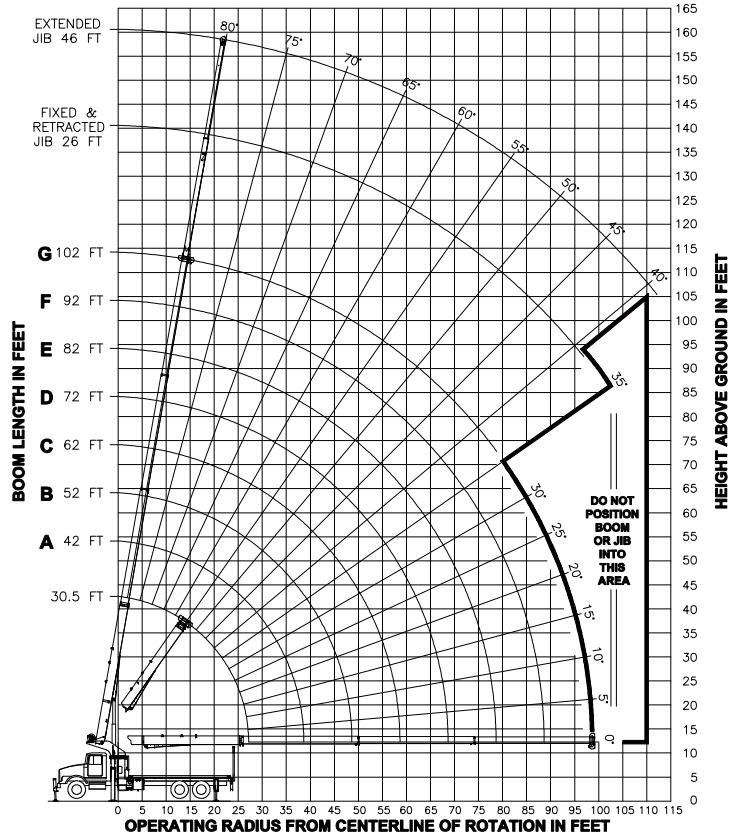


**RANGE DIAGRAM  
- FULL SPREAD CONFIGURATION -**



HEIGHT ABOVE GROUND IN FEET

**LMI OPERATING CODES**

SETTING	CRANE CONFIGURATION	SETTING	CRANE WITH PERSONNEL LIFTING PLATFORM
#1	--- MAIN BOOM	#5	--- PERSONNEL LIFTING PLATFORM ON MAIN BOOM
#2	--- FIXED JIB	#6	--- PERSONNEL LIFTING PLATFORM ON FIXED JIB
#3	--- TELESCOPIC JIB--RETRACTED	#7	--- PERSONNEL LIFTING PLATFORM ON TELESCOPIC JIB--RETRACTED
#4	--- TELESCOPIC JIB--EXTENDED	#8	--- PERSONNEL LIFTING PLATFORM ON TELESCOPIC JIB--EXTENDED

**ALLOWABLE LINE PULL**

1 PART	2 PART	3 PART	4 PART	5 PART	6 PART	7 PART
8500 LBS	17000 LBS	25500 LBS	34000 LBS	42500 LBS	51000 LBS	60000 LBS
7700 LBS	15400 LBS	23100 LBS	30800 LBS	38500 LBS	46200 LBS	53900 LBS

**WARNING**

ANTI-TWO-BLOCK SYSTEM MUST BE IN GOOD OPERATING CONDITION BEFORE OPERATING CRANE.

REFER TO THE OWNER'S MANUAL.

KEEP AT LEAST 3 WRAPS OF LOAD LINE ON THE DRUM AT ALL TIMES.

9/16" 6X25 IWRC (3.5:1 SF) - 29750 LBS MIN BREAKING STRENGTH  
9/16" ROT RESISTANT (5.0:1 SF) - 38500 LBS MIN BREAKING STRENGTH

**DEDUCTIONS FROM RATED LOADS FOR LOAD HANDLING DEVICES SUPPLIED BY MANITEX**

AUXILIARY BLOCK	50 LBS
AUXILIARY SHEAVE	50 LBS
OVERHAUL BALL	SEE OVERHAUL BALL MFG. NAMEPLATE
LOAD BLOCK	SEE BLOCK MFG. NAMEPLATE
HOSE REEL	140 LBS
SWING AROUND JIB	SEE LOAD CHART

**WARNING**  
LIFTING OFF THE MAIN BOOM POINT WHILE THE JIB IS ERECTED IS NOT INTENDED OR APPROVED.

LOAD RATINGS IN LBS WITH OUTRIGGERS AND STABILIZERS EXTENDED

BOOM LENGTH (FEET)	LMI CODE #1							OUTRIGGERS AND STABILIZERS EXTENDED							
	BASE							FIXED JIB	TELESCOPIC JIB						
	A	B	C	D	E	F	G	LMI CODE #2	LMI CODE #3	LMI CODE #4					
30.5 FT	42 FT	52 FT	62 FT	72 FT	82 FT	92 FT	102 FT								
5	77	60000													
8	71	38600													
10	67	33600	73	25000	77	25000									
12	62	29620	71	25000	75	25000	78	25000							
15	55	25510	66	23570	71	22450	75	21640	78	19680					
20	42	20200	58	18740	65	17730	70	17340	74	16760					
25	24	15980	50	15770	59	14910	65	14220	69	13670					
30			39	13220	52	12620	60	12020	65	11510					
35			26	10380	44	10630	54	10360	60	9910					
40					35	8220	48	8360	55	8460					
45					23	6500	41	6650	50	6750					
50							33	5370	45	5470					
55							22	4380	38	4480					
60									31	3690					
65									20	3030					
70										28	2570				
75										20	2110				
80											28	1770			
85											19	1430			
90												27	1180		
95												18	910		
100													100	40	
105														105	36
110															110

500 LBS 360 LBS 290 LBS 250 LBS 210 LBS 190 LBS 170 LBS 150 LBS DEDUCTIONS FOR STOWED FIXED JIB  
740 LBS 540 LBS 440 LBS 370 LBS 320 LBS 280 LBS 250 LBS 220 LBS DEDUCTIONS FOR STOWED TELESCOPIC JIB

**WARNING**

1. THE OPERATOR MUST READ AND UNDERSTAND THE OWNER'S MANUAL BEFORE OPERATING THIS CRANE.
2. POSITIONING OR OPERATION OF CRANE BEYOND AREAS SHOWN ON THIS CHART IS NOT INTENDED OR APPROVED EXCEPT WHERE SPECIFIED IN OWNER'S MANUAL.
3. LOADED BOOM ANGLES AT SPECIFIED BOOM LENGTHS GIVE ONLY AN APPROXIMATION OF THE OPERATING RADIUS. THE BOOM ANGLE BEFORE LOADING SHOULD BE GREATER TO ACCOUNT FOR DEFLECTIONS. DO NOT EXCEED THE OPERATING RADIUS FOR RATED LOADS.
4. THE OPERATING RADIUS SHOWN IN THE JIB RATING CHART IS FOR FULLY EXTENDED BOOM ONLY. WHEN BOOM IS NOT FULLY EXTENDED, USE ONLY LOADED BOOM ANGLE TO DETERMINE LOAD RATING OF JIB.
5. BOOM MUST BE FULLY RETRACTED WHEN JIB IS ERECTED, BEFORE LOWERING BOOM THRU THIS AREA.
6. FOR BOOM ANGLES NOT SHOWN ON JIB LOAD RATING CHART, USE RATING OF NEXT LOWER BOOM ANGLE.
7. FOR BOOM LENGTHS NOT SHOWN, USE RATING OF NEXT SHORTER OR LONGER BOOM LENGTH, WHICHEVER IS LESS. FOR RADII NOT SHOWN, USE RATING OF NEXT LONGER RADIUS.
8. CRANE LOAD RATINGS ON OUTRIGGERS ARE BASED ON FREELY SUSPENDED LOADS WITH THE MACHINE LEVELED AND STANDING ON A FIRM UNIFORM SUPPORTING SURFACE. NO ATTEMPT SHALL BE MADE TO MOVE A LOAD HORIZONTALLY ON THE GROUND IN ANY DIRECTION.
9. PRACTICAL WORKING LOADS DEPEND ON SUPPORTING SURFACE, WIND, AND OTHER FACTORS AFFECTING STABILITY SUCH AS HAZARDOUS SURROUNDINGS, EXPERIENCE OF PERSONNEL, AND PROPER HANDLING, ALL OF WHICH MUST BE TAKEN INTO ACCOUNT BY THE OPERATOR.
10. THE MAXIMUM LOAD WHICH MAY BE TELESCOPED IS LIMITED BY HYDRAULIC PRESSURE, BOOM ANGLE, AND BOOM LUBRICATION. IT IS SAFE TO ATTEMPT TO TELESCOPE ANY LOAD WITHIN THE LIMITS OF THE LOAD RATING CHART. BOOM MUST BE FULLY RETRACTED AGAINST BOOM STOPS AT ALL TIMES WHEN LIFTING MINIMUM BOOM LENGTH CAPACITY LOADS.

**INFORMATION**

1. DEDUCTIONS MUST BE MADE FROM RATED LOADS FOR STOWED JIB, OPTIONAL ATTACHMENTS, HOOKS, AND LOAD-BLOCKS (SEE DEDUCTION CHART). WEIGHTS OF SLINGS AND ALL OTHER LOAD HANDLING DEVICES SHALL BE CONSIDERED A PART OF THE LOAD.
2. CRANE LOAD RATINGS WITH OUTRIGGERS ARE BASED ON OUTRIGGERS AND STABILIZERS EXTENDED AND SET WITH MACHINE LEVELED.
3. LOAD RATINGS ABOVE THE HEAVY LINE ARE STRUCTURALLY LIMITED CAPACITIES. LOAD RATINGS BELOW THE HEAVY LINE ARE STABILITY LIMITED CAPACITIES AND DO NOT EXCEED 85% OF TIPPING.

**DEFINITIONS**

1. OPERATING RADIUS IS THE HORIZONTAL DISTANCE FROM THE AXIS OF ROTATION TO THE CENTER OF THE VERTICAL HOIST LINE OR TACKLE WITH LOAD APPLIED.
2. LOADED BOOM ANGLE AS SHOWN IN THE COLUMN HEADED BY  $\angle$ , IS THE INCLUDED ANGLE BETWEEN THE HORIZONTAL AND LONGITUDINAL AXES OF THE BOOM BASE AFTER LIFTING RATED LOAD AT RATED RADIUS.

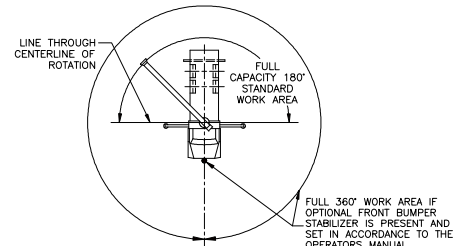


**MODEL  
30102C**

CRANE MEETS ANSI B30.5 REQUIREMENTS

7300096-030 NR

**AREA OF OPERATION**



FULL 360° WORK AREA IF OPTIONAL FRONT BUMPER STABILIZER IS PRESENT AND SET IN ACCORDANCE TO THE OPERATORS MANUAL.