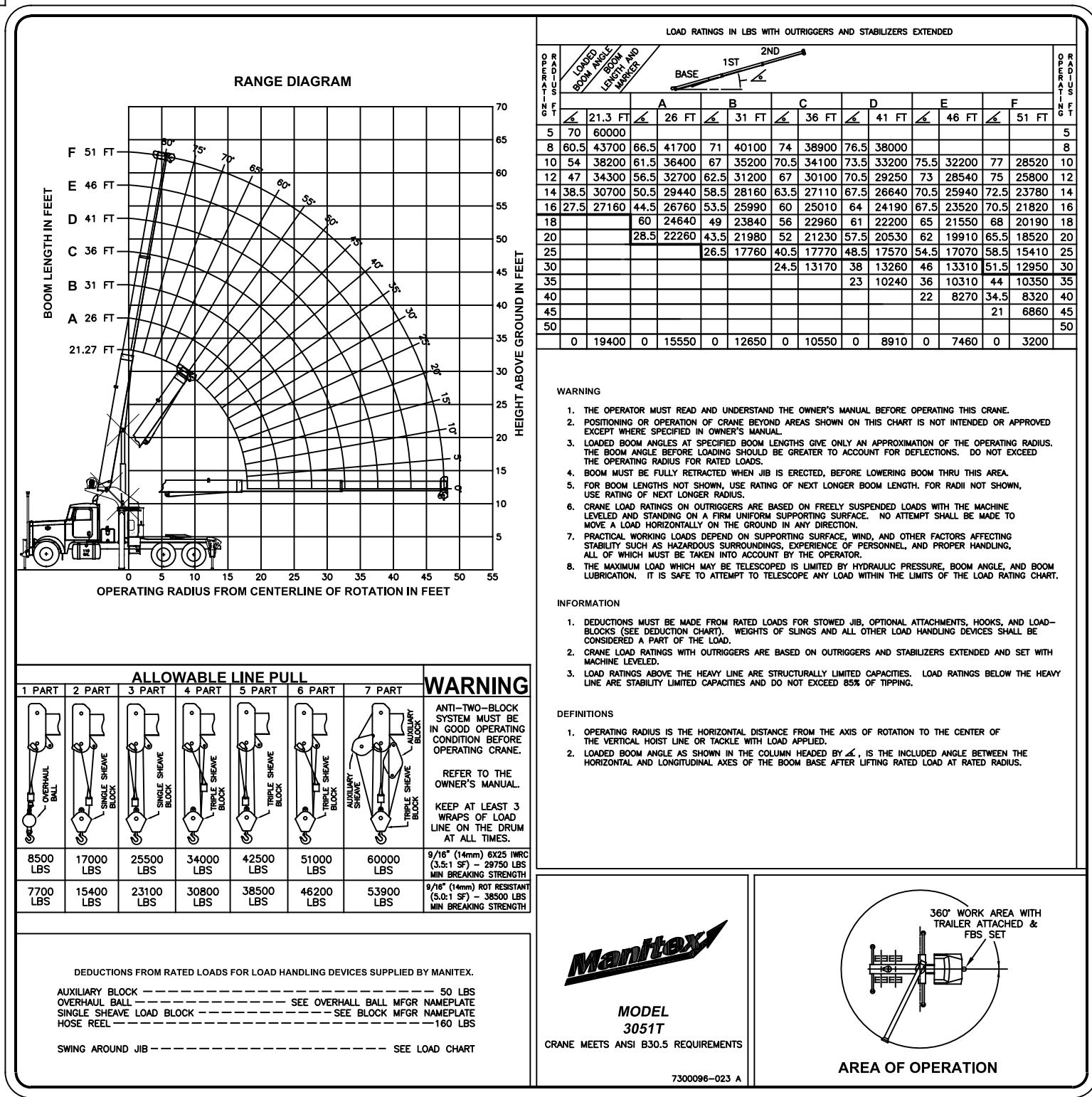


REVISIONS	
EN 14-0001-05	AB 03/14
NEW RELEASE	
EN 17-0014-07	AB 09/17
A) ADD 0" CAPACITIES	
EN 21-0010-07	ZD 11/21
B) ADD 14mm	
EN 22-0002-04	ZD 04/22
C) 34.3 WAS 32.3	



- WARNING**
- THE OPERATOR MUST READ AND UNDERSTAND THE OWNER'S MANUAL BEFORE OPERATING THIS CRANE.
 - POSITIONING OR OPERATION OF CRANE BEYOND AREAS SHOWN ON THIS CHART IS NOT INTENDED OR APPROVED EXCEPT WHERE SPECIFIED IN OWNER'S MANUAL.
 - LOADED BOOM ANGLES AT SPECIFIED BOOM LENGTHS GIVE ONLY AN APPROXIMATION OF THE OPERATING RADIUS. THE BOOM ANGLE BEFORE LOADING SHOULD BE GREATER TO ACCOUNT FOR DEFLECTIONS. DO NOT EXCEED THE OPERATING RADIUS FOR RATED LOADS.
 - BOOM MUST BE FULLY RETRACTED WHEN JIB IS ERECTED, BEFORE LOWERING BOOM THRU THIS AREA.
 - FOR BOOM LENGTHS NOT SHOWN, USE RATING OF NEXT LONGER BOOM LENGTH. FOR RADI NOT SHOWN, USE RATING OF NEXT LONGER RADIUS.
 - CRANE LOAD RATINGS ON OUTRIGGERS ARE BASED ON FREELY SUSPENDED LOADS WITH THE MACHINE LEVELED AND STANDING ON A FIRM UNIFORM SUPPORTING SURFACE. NO ATTEMPT SHALL BE MADE TO MOVE A LOAD HORIZONTALLY ON THE GROUND IN ANY DIRECTION.
 - PRACTICAL WORKING LOADS DEPEND ON SUPPORTING SURFACE, WIND, AND OTHER FACTORS AFFECTING STABILITY SUCH AS HAZARDOUS SURROUNDINGS, EXPERIENCE OF PERSONNEL, AND PROPER HANDLING, ALL OF WHICH MUST BE TAKEN INTO ACCOUNT BY THE OPERATOR.
 - THE MAXIMUM LOAD WHICH MAY BE TELESCOPED IS LIMITED BY HYDRAULIC PRESSURE, BOOM ANGLE, AND BOOM LUBRICATION. IT IS SAFE TO ATTEMPT TO TELESCOPE ANY LOAD WITHIN THE LIMITS OF THE LOAD RATING CHART.

- INFORMATION**
- DEDUCTIONS MUST BE MADE FROM RATED LOADS FOR STOWED JIB, OPTIONAL ATTACHMENTS, HOOKS, AND LOAD-BLOCKS (SEE DEDUCTION CHART). WEIGHTS OF SLINGS AND ALL OTHER LOAD HANDLING DEVICES SHALL BE CONSIDERED A PART OF THE LOAD.
 - CRANE LOAD RATINGS WITH OUTRIGGERS ARE BASED ON OUTRIGGERS AND STABILIZERS EXTENDED AND SET WITH MACHINE LEVELED.
 - LOAD RATINGS ABOVE THE HEAVY LINE ARE STRUCTURALLY LIMITED CAPACITIES. LOAD RATINGS BELOW THE HEAVY LINE ARE STABILITY LIMITED CAPACITIES AND DO NOT EXCEED 85% OF TIPPING.

- DEFINITIONS**
- OPERATING RADIUS IS THE HORIZONTAL DISTANCE FROM THE AXIS OF ROTATION TO THE CENTER OF THE VERTICAL HOIST LINE OR TACKLE WITH LOAD APPLIED.
 - LOADED BOOM ANGLE AS SHOWN IN THE COLUMN HEADED BY \angle , IS THE INCLUDED ANGLE BETWEEN THE HORIZONTAL AND LONGITUDINAL AXES OF THE BOOM BASE AFTER LIFTING RATED LOAD AT RATED RADIUS.

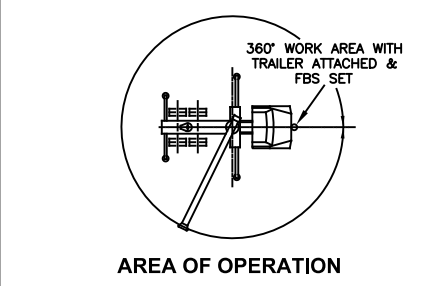
ALLOWABLE LINE PULL

1 PART	2 PART	3 PART	4 PART	5 PART	6 PART	7 PART	WARNING
							<p>ANTI-TWO-BLOCK SYSTEM MUST BE IN GOOD OPERATING CONDITION BEFORE OPERATING CRANE.</p> <p>REFER TO THE OWNER'S MANUAL.</p> <p>KEEP AT LEAST 3 WRAPS OF LOAD LINE ON THE DRUM AT ALL TIMES.</p> <p>9/16" (14mm) 6X25 HRPC (3.5:1 SF) - 29750 LBS MIN BREAKING STRENGTH</p> <p>9/16" (14mm) ROT RESISTANT (5.0:1 SF) - 38500 LBS MIN BREAKING STRENGTH</p>
8500 LBS	17000 LBS	25500 LBS	34000 LBS	42500 LBS	51000 LBS	60000 LBS	
7700 LBS	15400 LBS	23100 LBS	30800 LBS	38500 LBS	46200 LBS	53900 LBS	

DEDUCTIONS FROM RATED LOADS FOR LOAD HANDLING DEVICES SUPPLIED BY MANITEX.

AUXILIARY BLOCK ----- 50 LBS
 OVERHAUL BALL ----- SEE OVERHAUL BALL MFR NAMEPLATE
 SINGLE SHEAVE LOAD BLOCK ----- SEE BLOCK MFR NAMEPLATE
 HOSE REEL ----- 160 LBS

SWING AROUND JIB ----- SEE LOAD CHART



NOTES:

- IF THIS DRAWING REQUIRES REVISION, ALSO UPDATE THE REVISION LETTER AT THE BOTTOM OF THE LOAD CHART.

MATERIAL : ALUMINUM 0.062 THICK
 ADHESIVE BACKING : 3M #9505
 COLORS : BACKGROUND - ALUMINUM
 PRINTING - BLUE PANTONE 293
 SIZE : ACTUAL AS SHOWN

16.00

16.00

R0.38

DOCUMENT CONTROL STATUS:
 ELECTRONIC FILE = CONTROLLED
 HARD COPY = UNCONTROLLED

Manitex

SCALE 1"=1"	DRAWN AB	CHECKED TR	APPVD./DATE DM 03/14
----------------	-------------	---------------	-------------------------

RANGE DIAGRAM AND CAPACITY CHART MODEL 3051T

TOLERANCES (UNLESS SPECIFIED) ±1/16"

7300096-023 SHEET 1 OF 1

THIS PRINT REMAINS THE PROPERTY OF MANITEX INC. ALL INFORMATION CONTAINED THEREON IS CONFIDENTIAL. IT IS LOANED, SUBJECT TO RETURN UPON AND ON EXPRESS CONDITION THAT IT IS NOT TO BE COPIED OR USED DIRECTLY OR INDIRECTLY IN ANY WAY WHATSOEVER DETRIMENTAL TO OUR INTERESTS.

TOLERANCE UNLESS OTHERWISE SPECIFIED		
DECIMAL PLACES	FABRICATION	MACHINING
(1) PLACE 0.0	± 0.120	± 0.030
(2) PLACE 0.00	± 0.060	± 0.015
(3) PLACE 0.000	± 0.030	± 0.005
ANGLES	± 1' 30"	± 0' 30"

1) √ = MACHINING TOLERANCE APPLIES TO THIS DIMENSION AND/OR SURFACE.
 2) ∇ INDICATES A TOLERANCE OTHER THAN INDICATED BY ORIGINAL DECIMAL DIMENSION
 EXAMPLE: .3125 = USE ONE DECIMAL PLACE TOLERANCE.