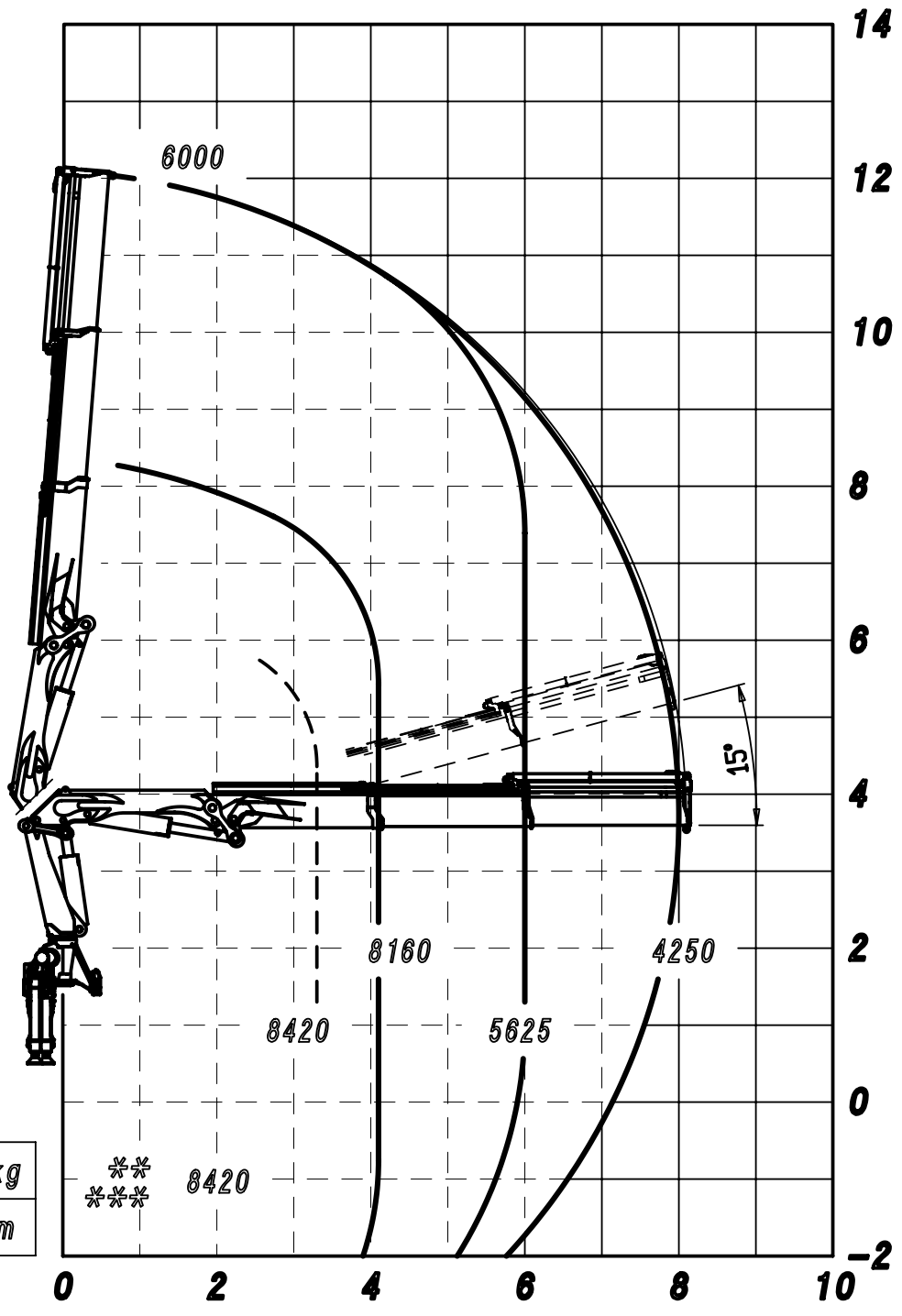


kg
m

A

B

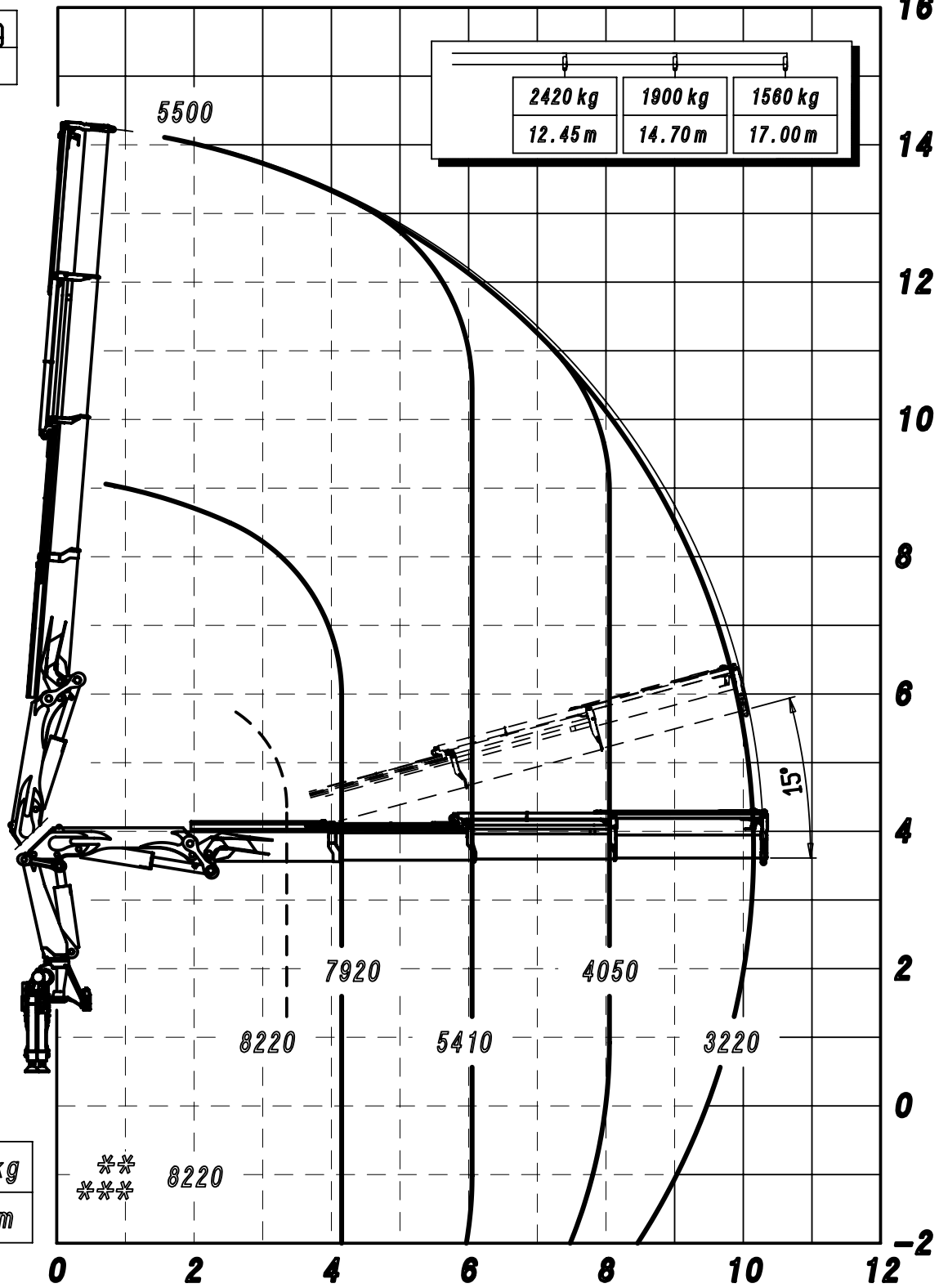
C



15000 kg
2.20 m

- - PORTATA VERSIONE LC
 ** PORTATA MASSIMA AL GANCIO MOBILE
 *** PORTATA MASSIMA PASSANTE PER L'ORIZZONTALE
 LE PRESTAZIONI INDICATE SI OTTENGONO CON
 ANGOLO DI TARGA A 20°

kg
m



-- PORTATA VERSIONE LC

** PORTATA MASSIMA AL GANCIO MOBILE

*** PORTATA MASSIMA PASSANTE PER L'ORIZZONTALE

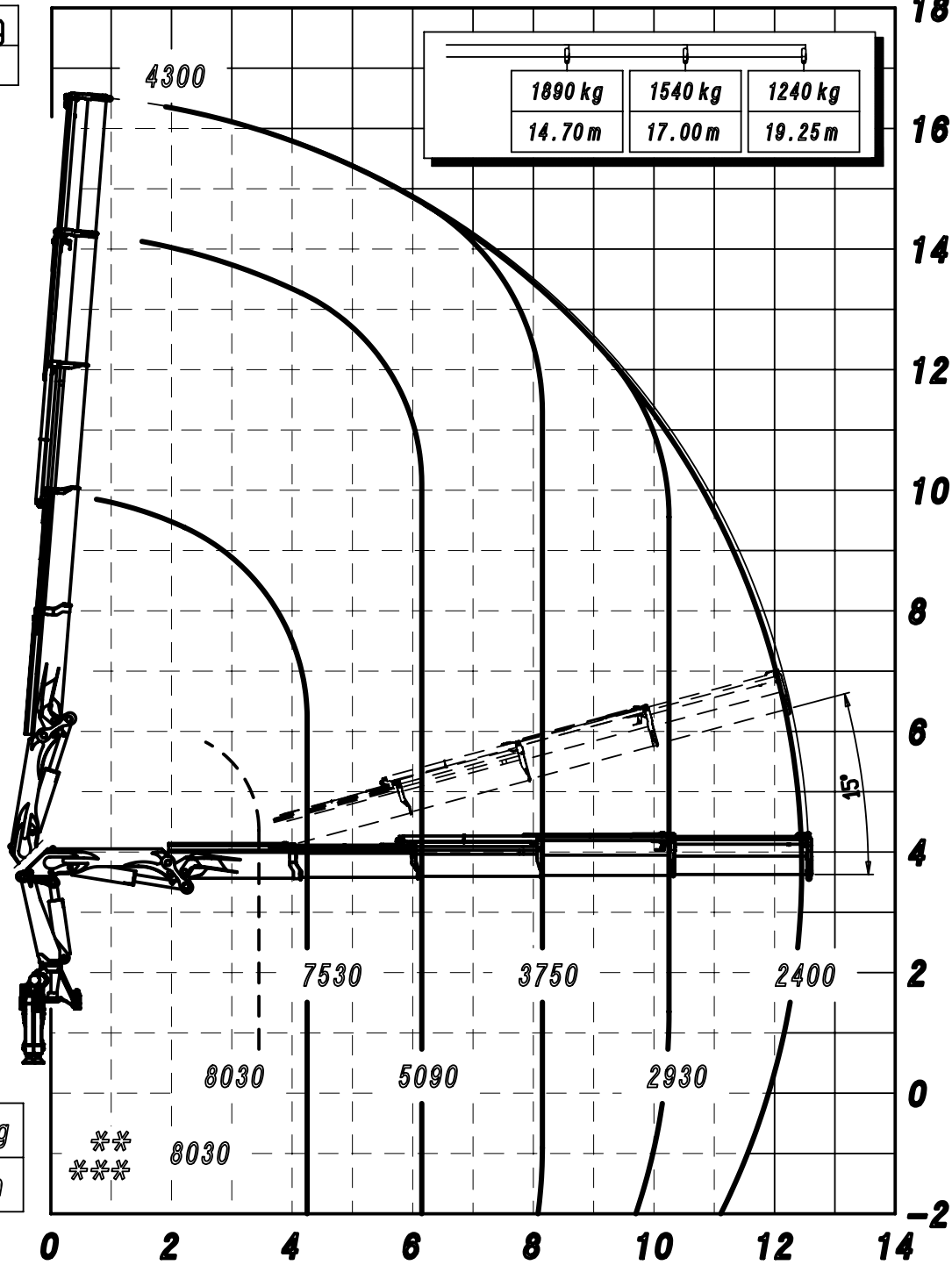
LE PRESTAZIONI INDICATE SI OTTENGONO CON

ANGOLO DI TARGA A 20°

** 38523 SP ** 188082

19/12/2013

kg
m



--- PORTATA VERSIONE LC

** PORTATA MASSIMA AL GANCIO MOBILE

*** PORTATA MASSIMA PASSANTE PER L'ORIZZONTALE

LE PRESTAZIONI INDICATE SI OTTENGONO CON

ANGOLO DI TARGA A 20°

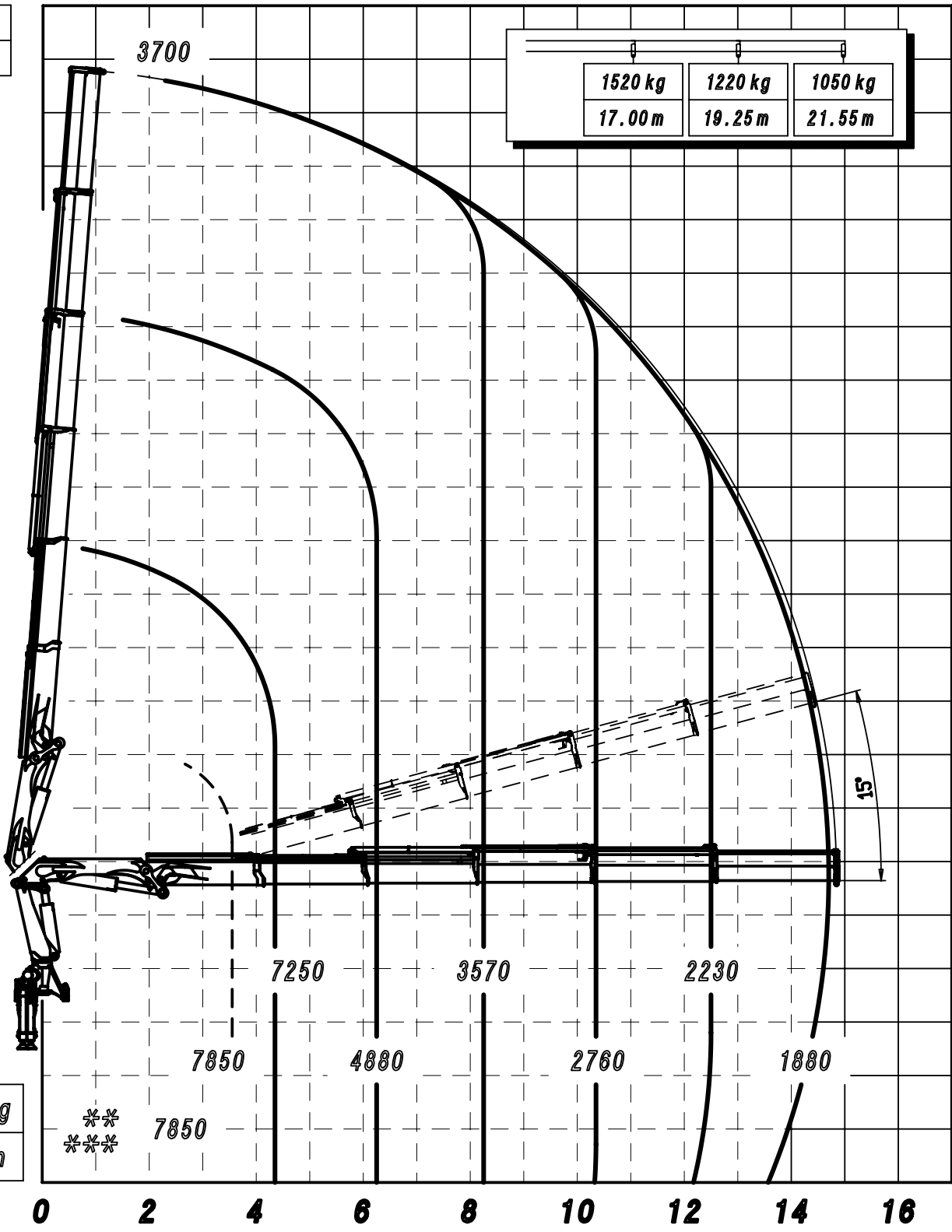
** 38524 SP ** 188083

19/12/2013

20
18
16
14
12
10
8
6
4
2
0
-2

kg
m

1520 kg	1220 kg	1050 kg
17.00 m	19.25 m	21.55 m



14330 kg
2.20 m

**

-- PORTATA VERSIONE LC
 ** PORTATA MASSIMA AL GANCIO MOBILE
 *** PORTATA MASSIMA PASSANTE PER L'ORIZZONTALE
 LE PRESTAZIONI INDICATE SI OTTENGONO CON
 ANGOLO DI TARGA A 20°

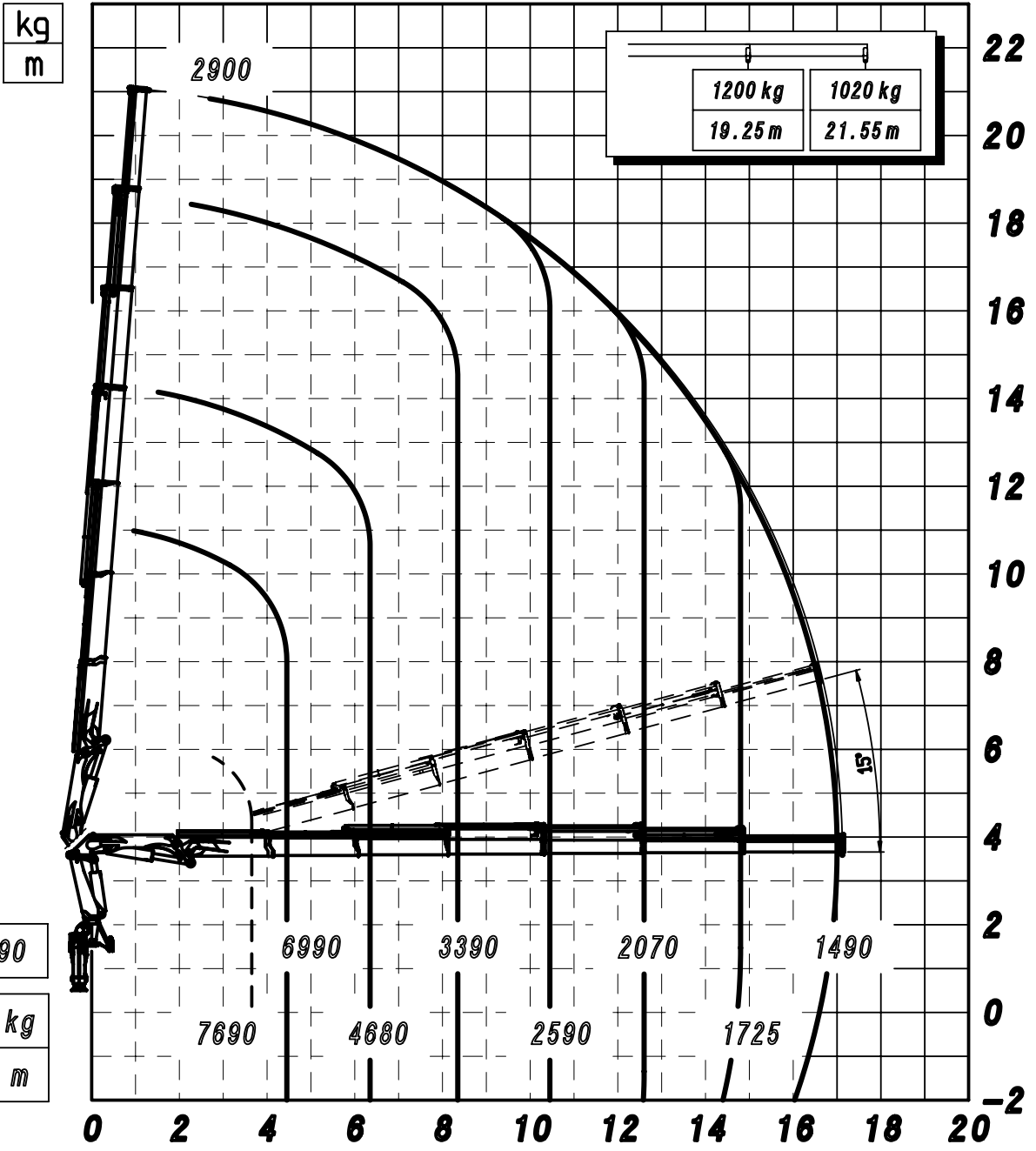
** 38525 SP ** 188084

19/12/2013

A

B

C

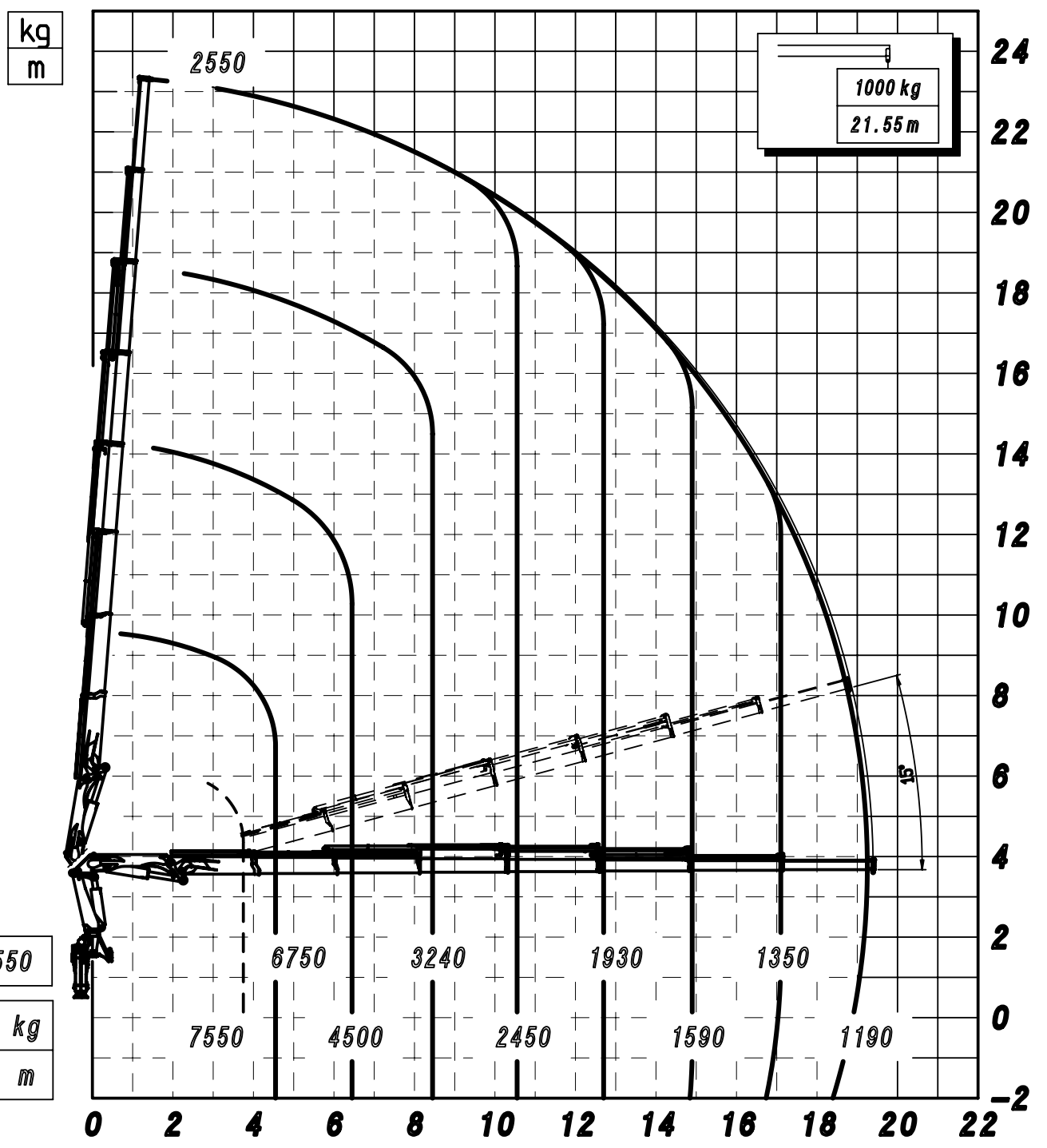


- - PORTATA VERSIONE LC
 ** PORTATA MASSIMA AL GANCIO MOBILE
 *** PORTATA MASSIMA PASSANTE PER L'ORIZZONTALE
 LE PRESTAZIONI INDICATE SI OTTENGONO CON
 ANGOLO DI TARGA A 20°

A

B

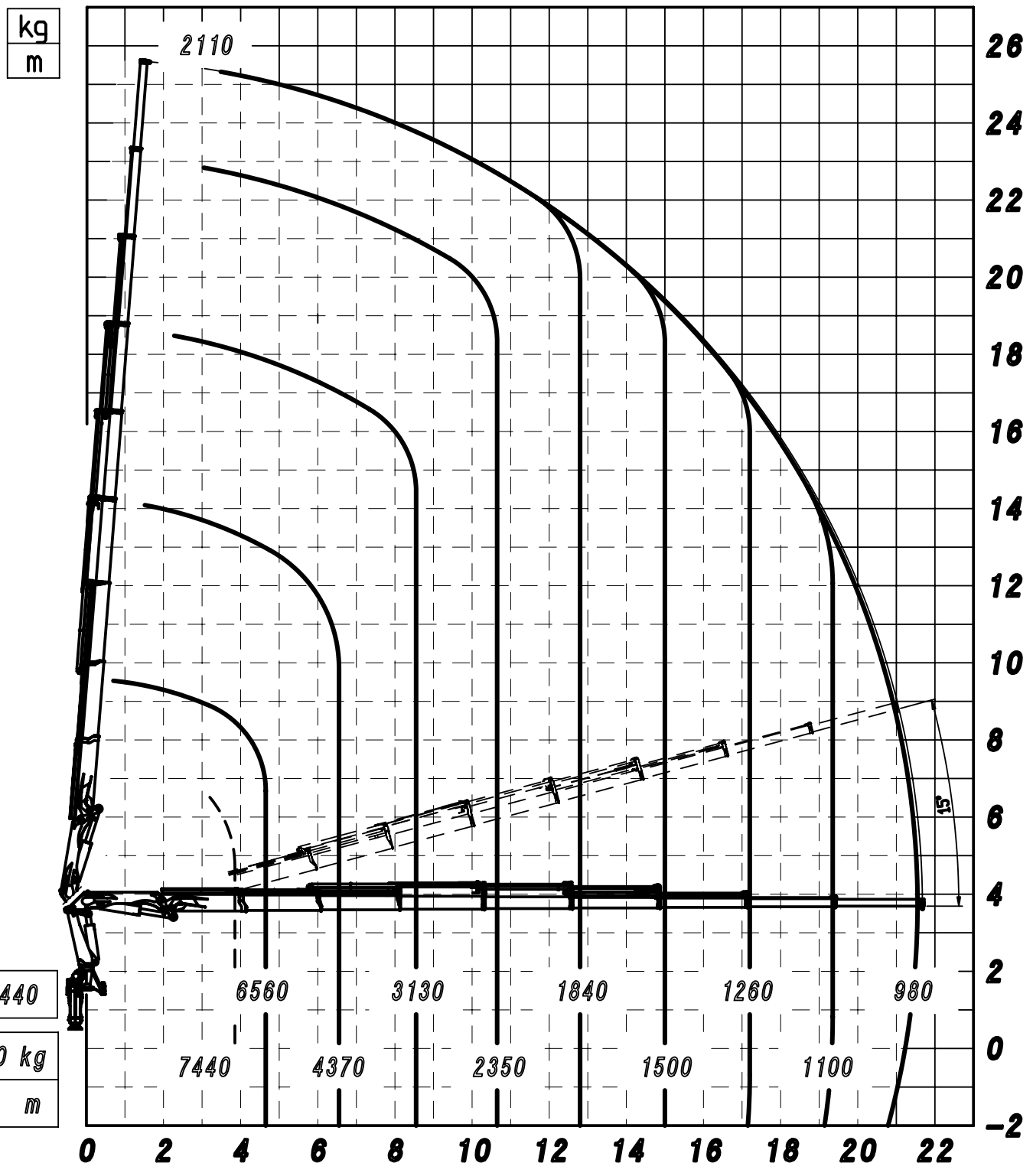
C



- - PORTATA VERSIONE LC
 ** PORTATA MASSIMA AL GANCIO MOBILE
 *** PORTATA MASSIMA PASSANTE PER L'ORIZZONTALE
 LE PRESTAZIONI INDICATE SI OTTENGONO CON ANGOLO DI TARGA A 20°

** 38527 SP ** 188086

19/12/2013



A

B

C

** 7440

 13860 kg
 2.20 m

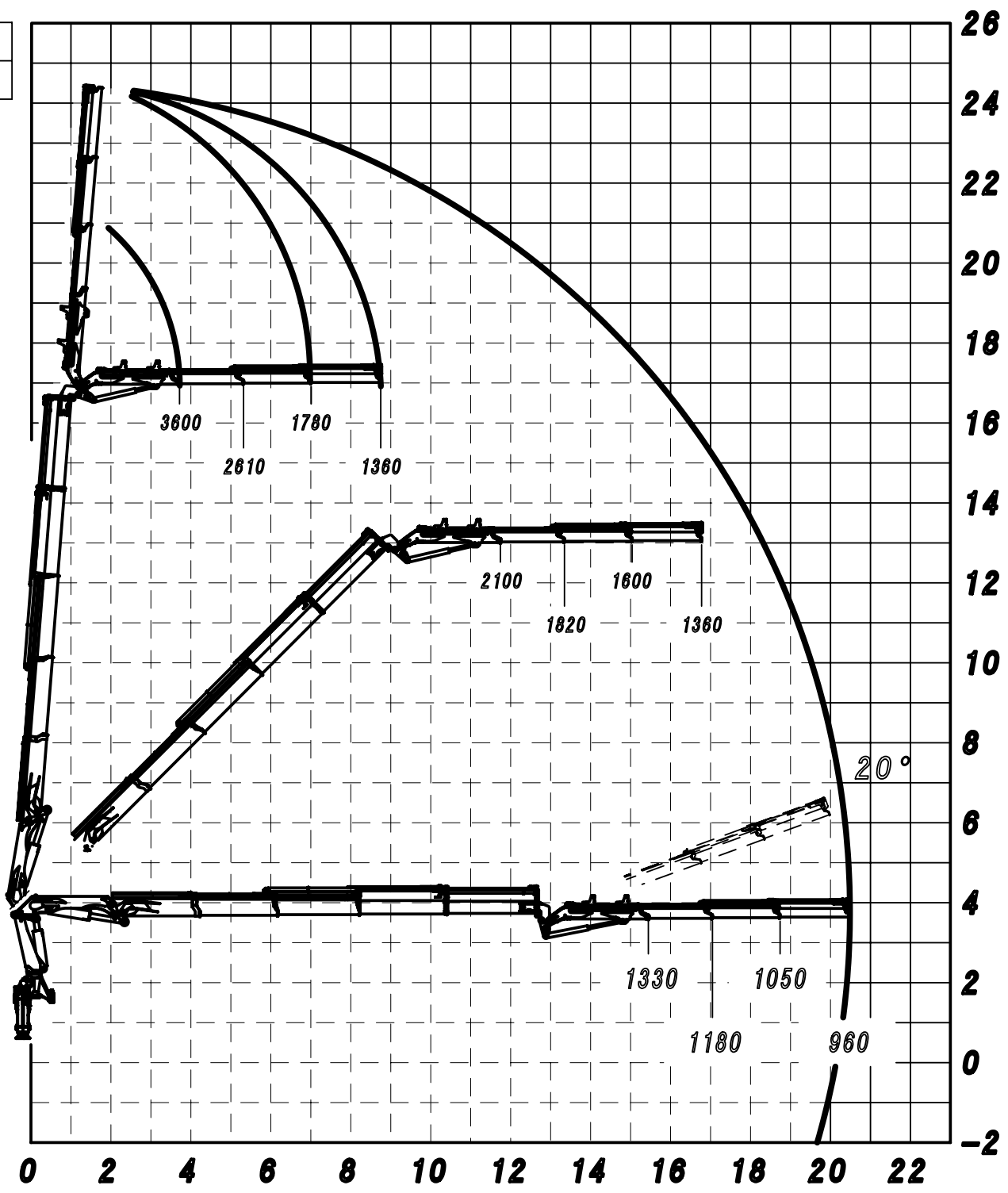
- - PORTATA VERSIONE LC
 ** PORTATA MASSIMA AL GANCIO MOBILE
 *** PORTATA MASSIMA PASSANTE PER L'ORIZZONTALE
 LE PRESTAZIONI INDICATE SI OTTENGONO CON
 ANGOLO DI TARGA A 20°

kg
m

A

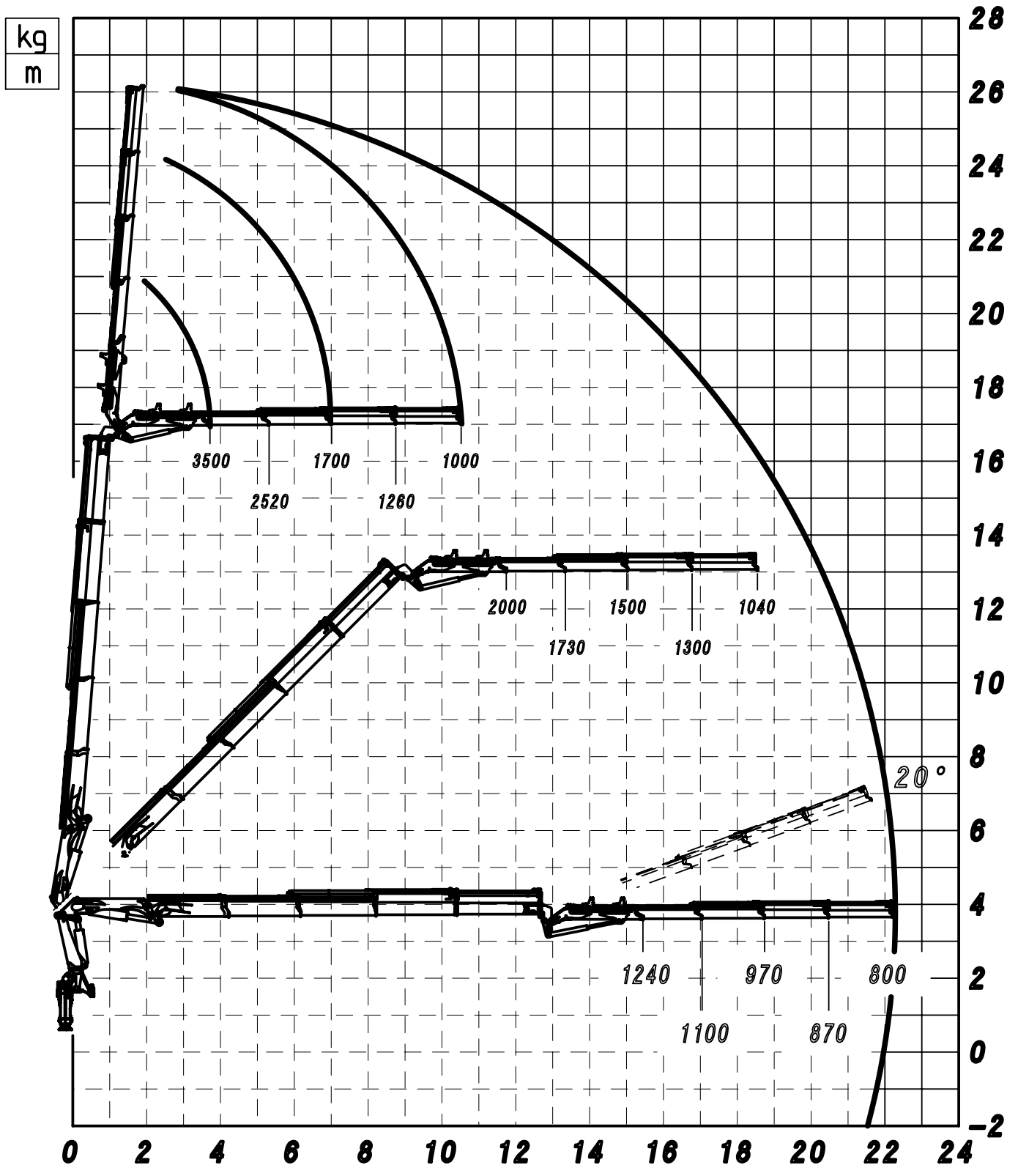
B

C



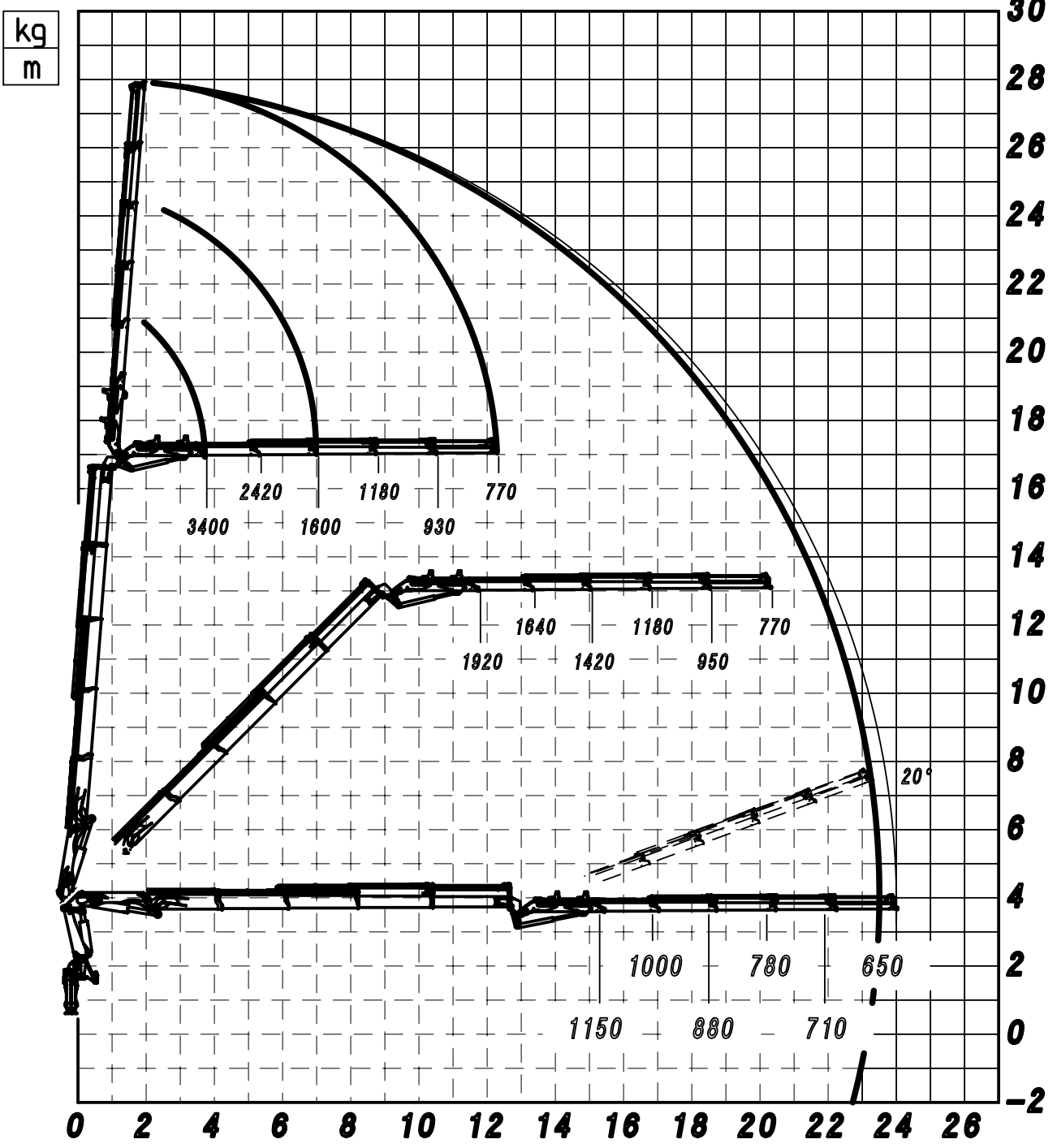
** 38524 SP + J1113.20 ** 188095

27/03/2013



** 38524 SP + J1114.20 ** 188096

27/03/2013



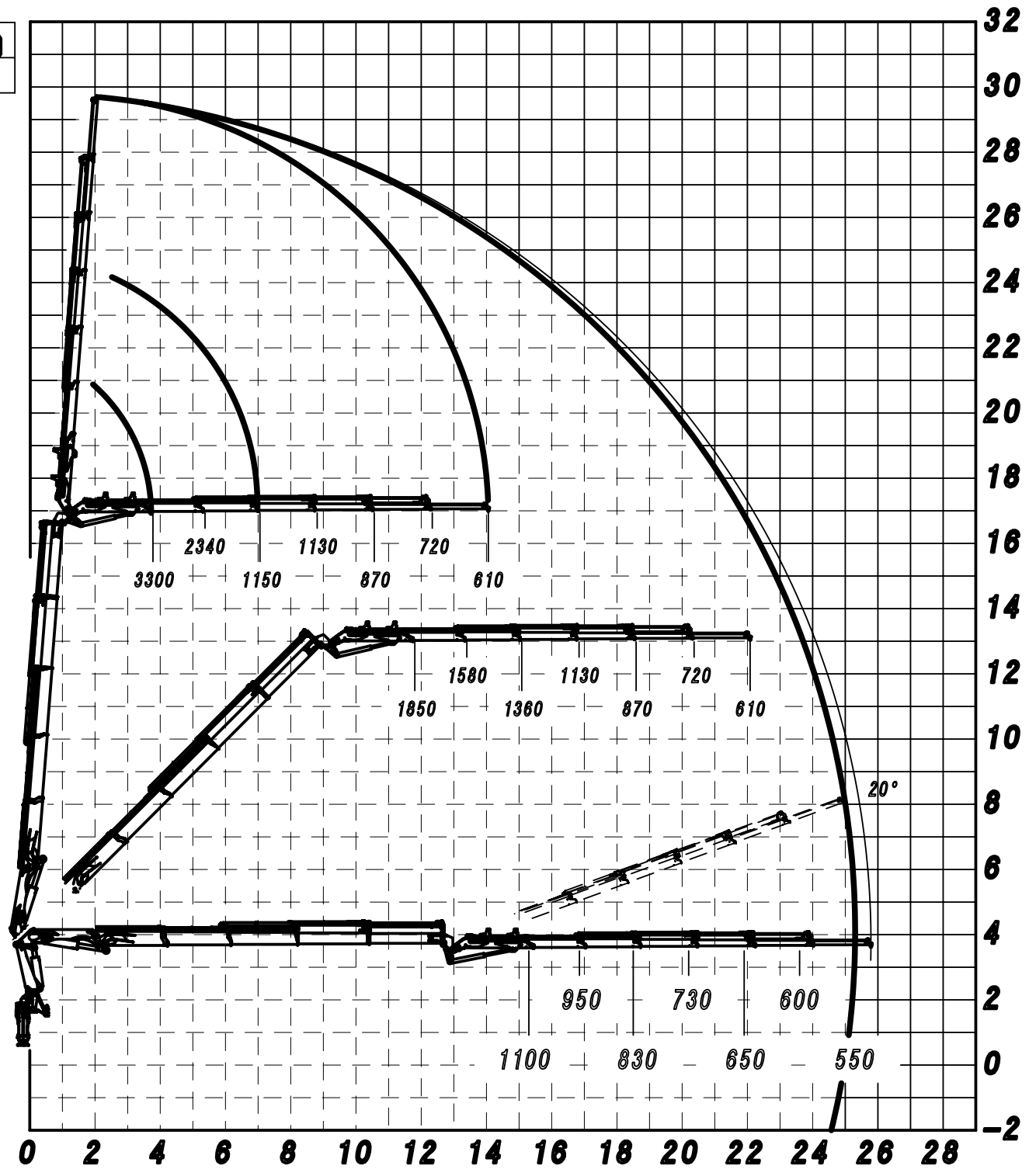
** 38524 SP + J1115.20 ** 188273
21/11/2013

kg
m

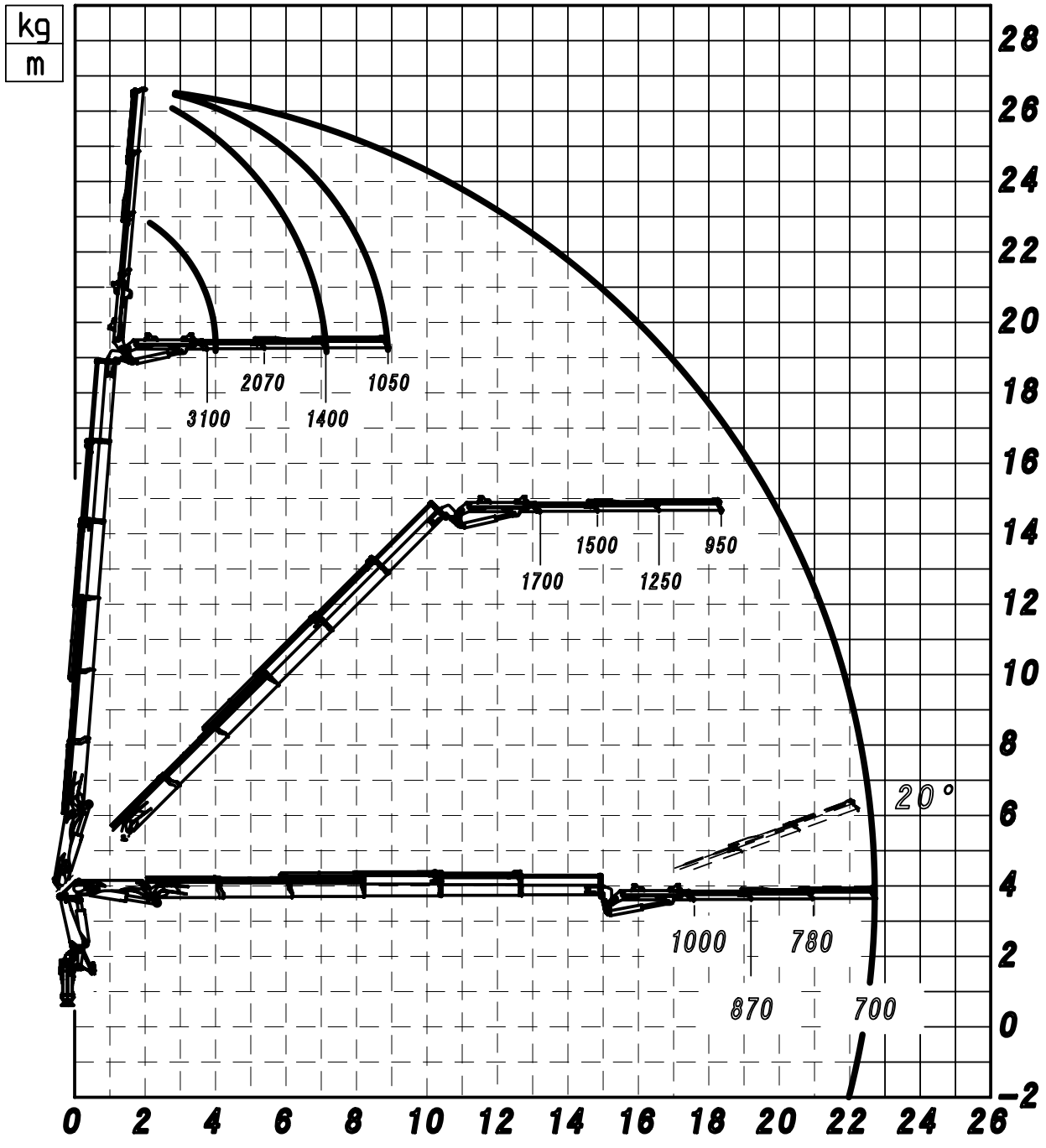
A

B

C



** 38524 SP + J1116.20 ** 188274
 21/11/2013

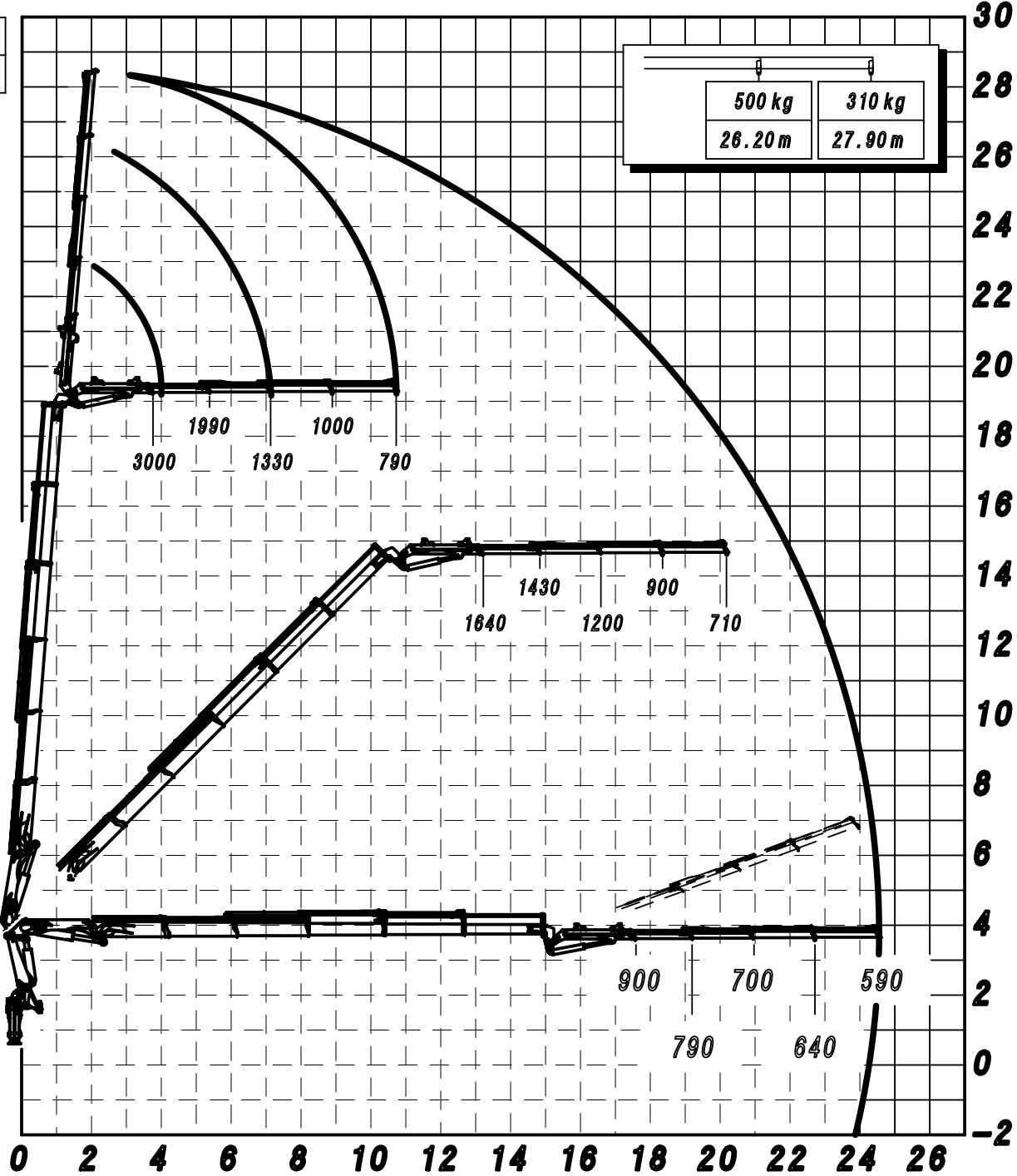


** 38525 SP + J813.20 ** 188414

18/07/2014

kg
m

500 kg	310 kg
26.20 m	27.90 m



** 38525 SP + J814.20 ** 188097

22/11/2013

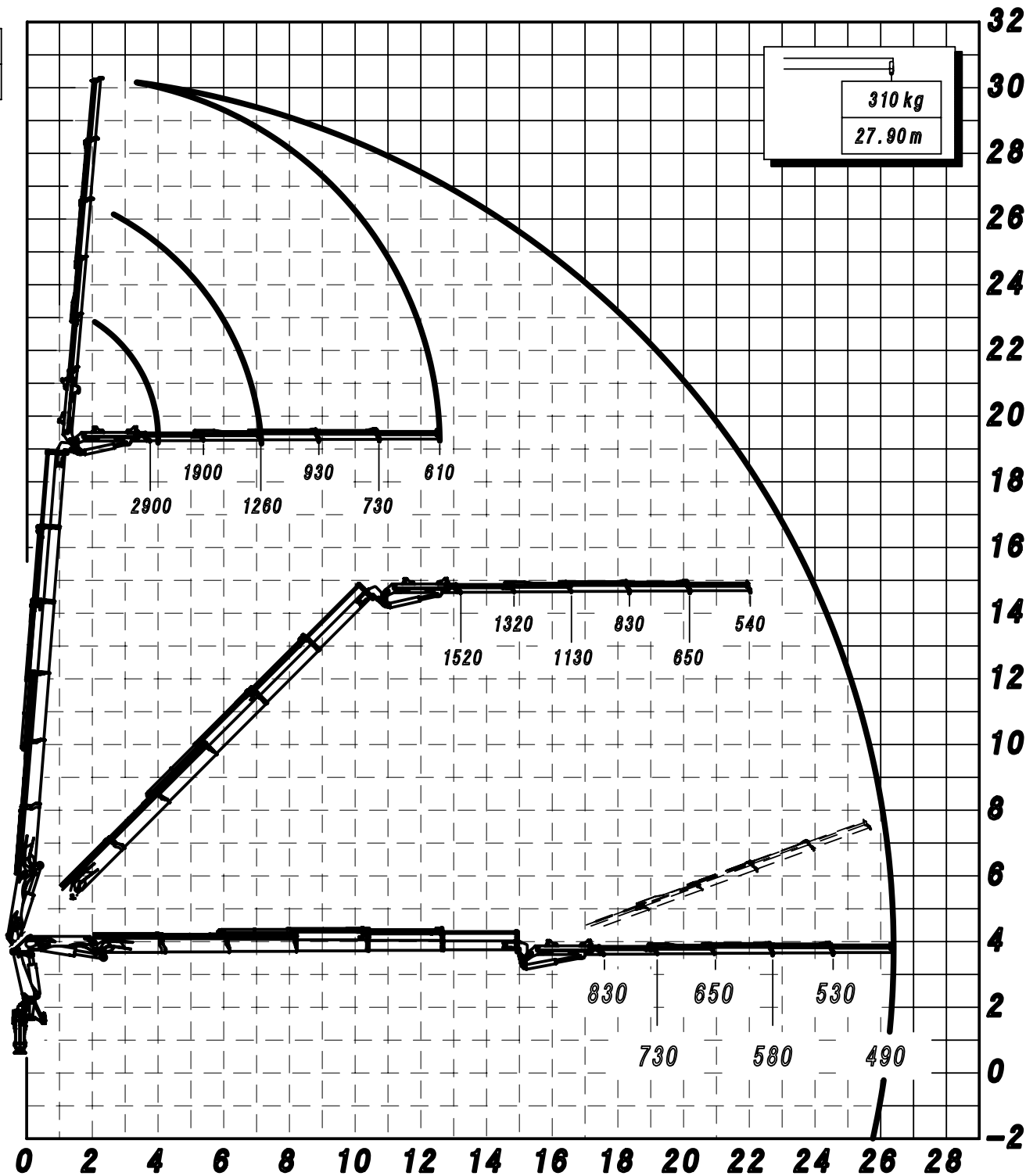
kg
m

310 kg
27.90 m

A

B

C



** 38525 SP + J815.20 ** 188098

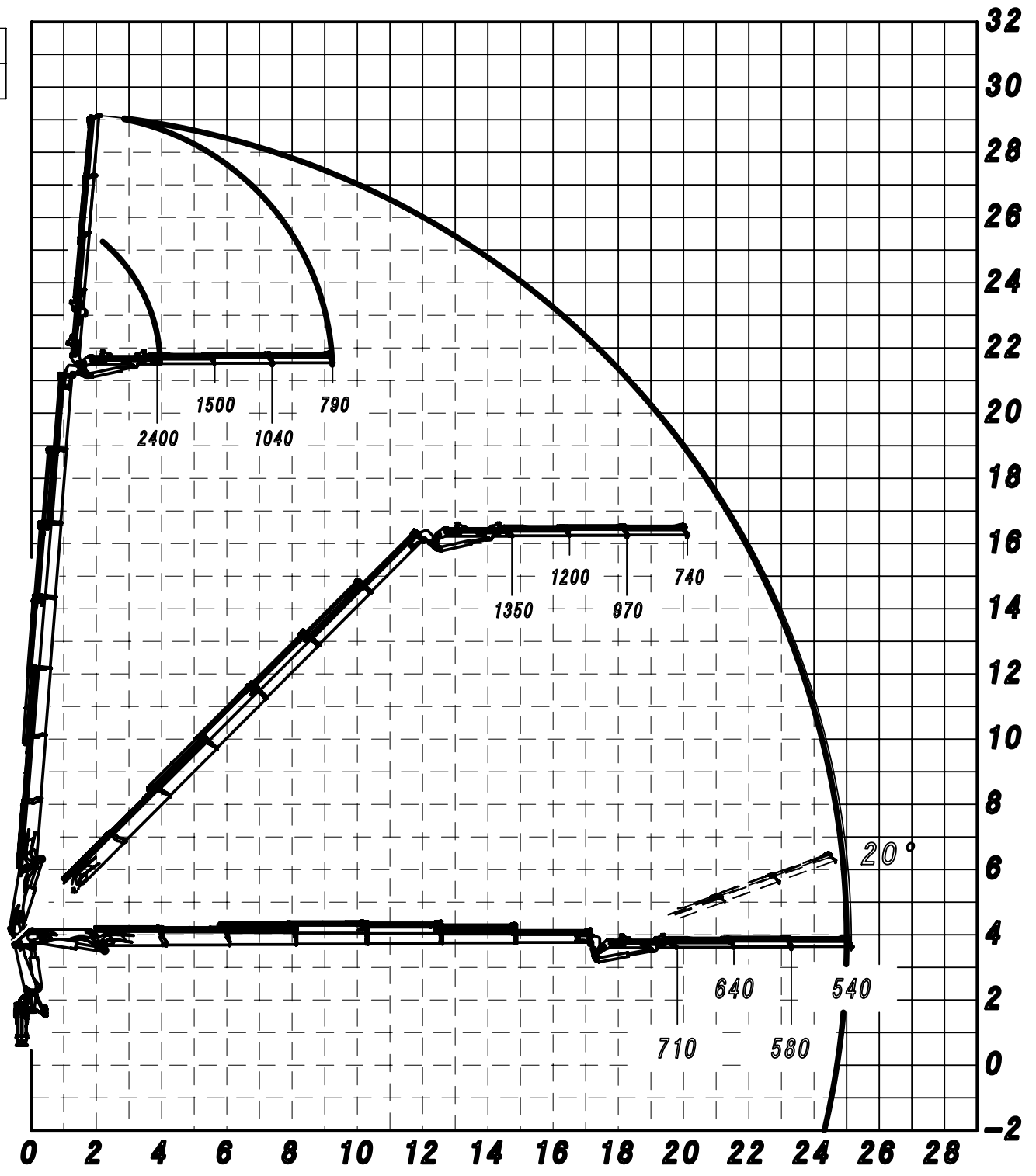
21/11/2013

kg
m

A

B

C



** 38526 SP + J613.20 ** 188275
 22/11/2013

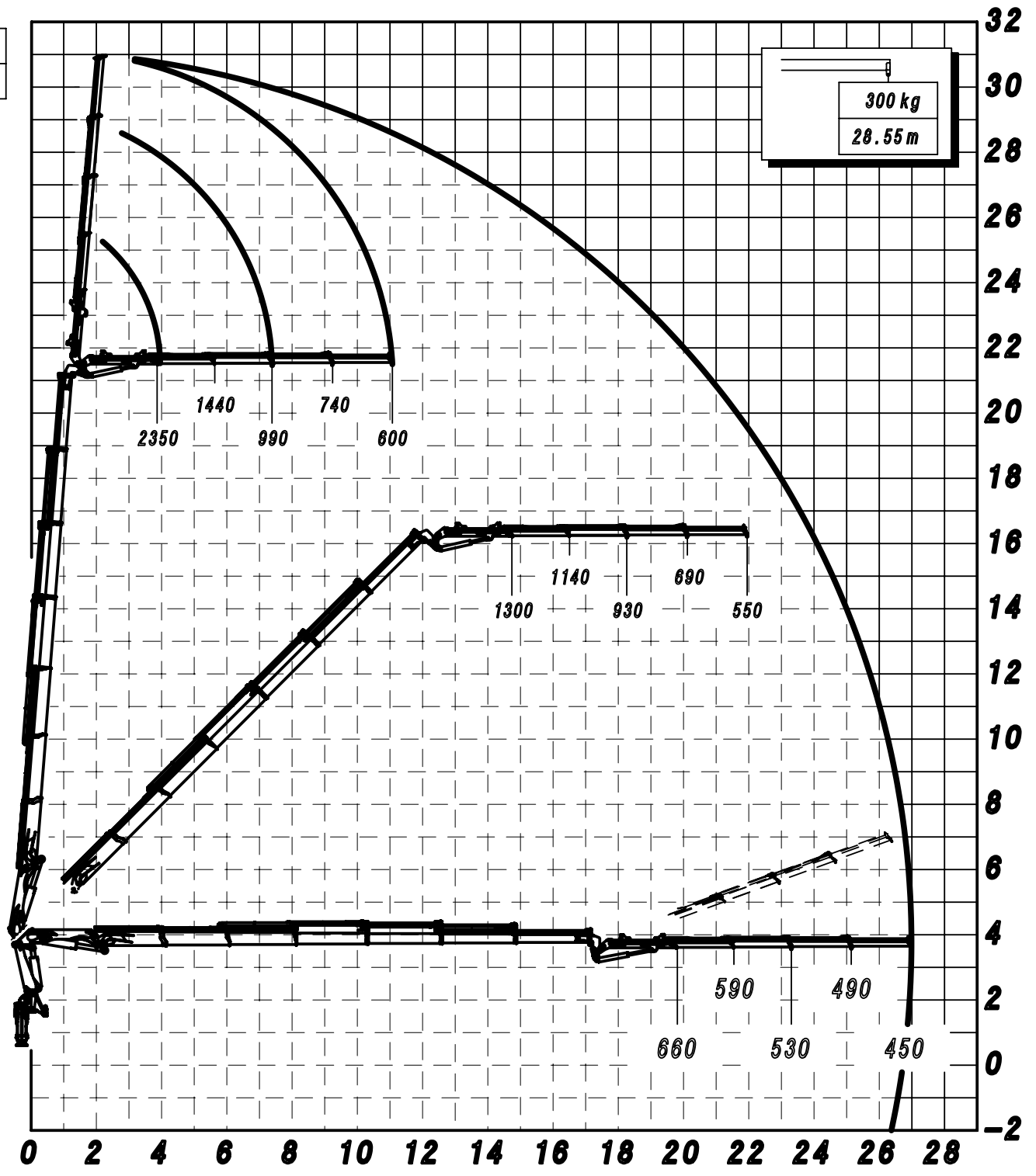
kg
m

300 kg
28.55 m

A

B

C

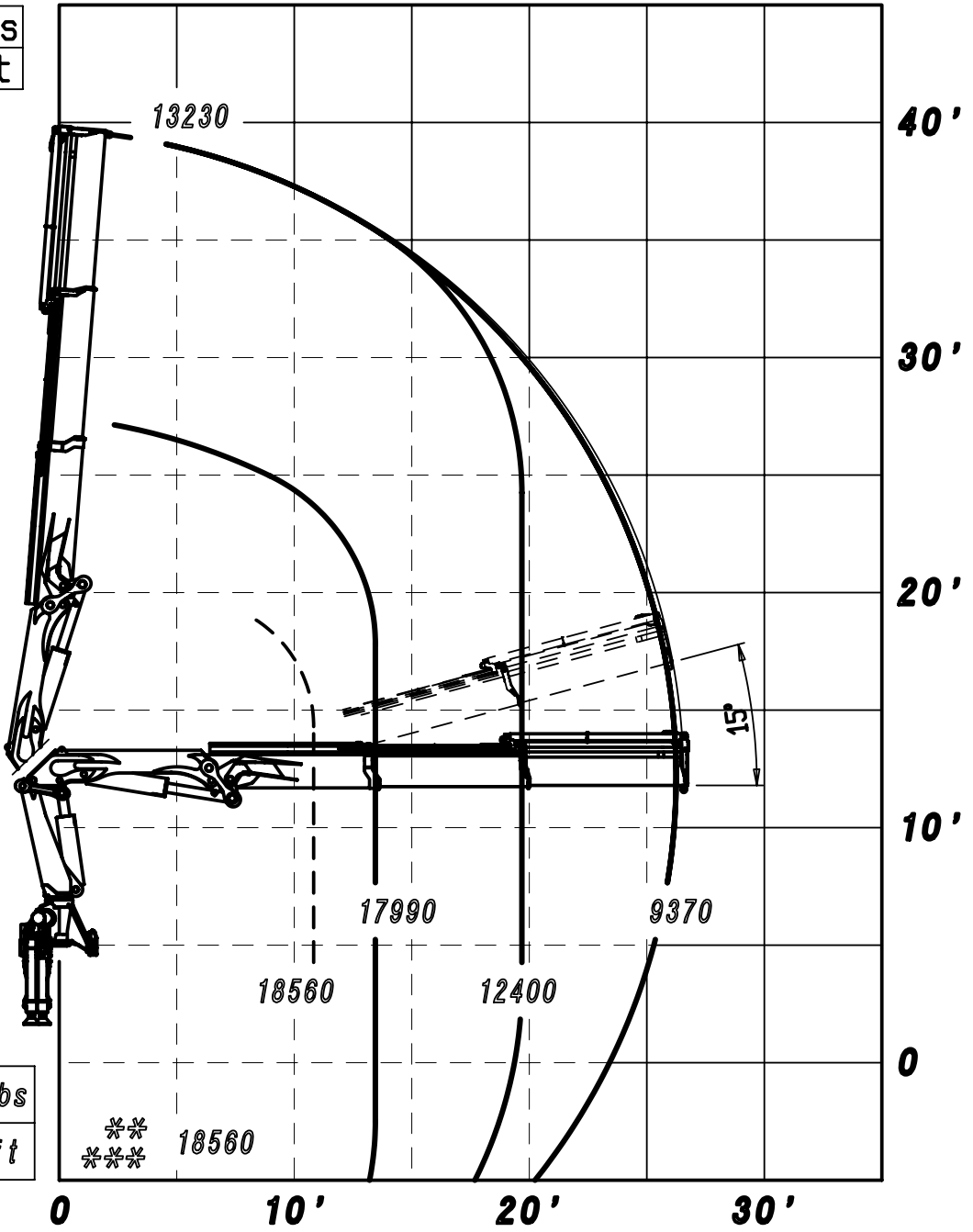


lbs
ft

A

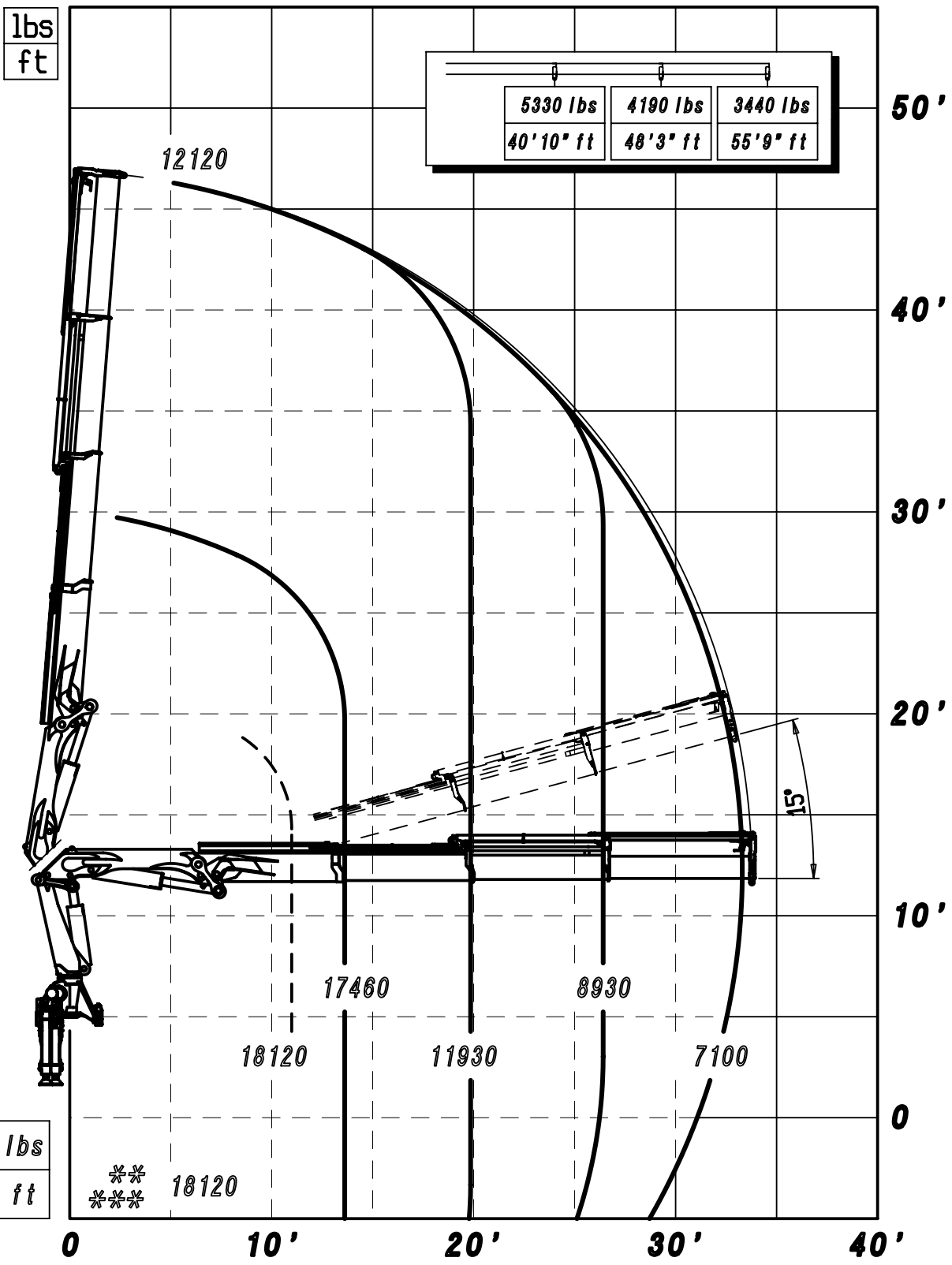
B

C



33070 lbs
7'3" ft

— — MAX. CAPACITY LC
 ** MAX. CAPACITY WITH MOBILE HOOK
 *** MAX. CAPACITY FROM HORIZONTAL TO VERTIUCAL
 THE STATED PERFORMANCES CAM BE OBTAINED WITH
 20° INCLINATED MAIN BOOM

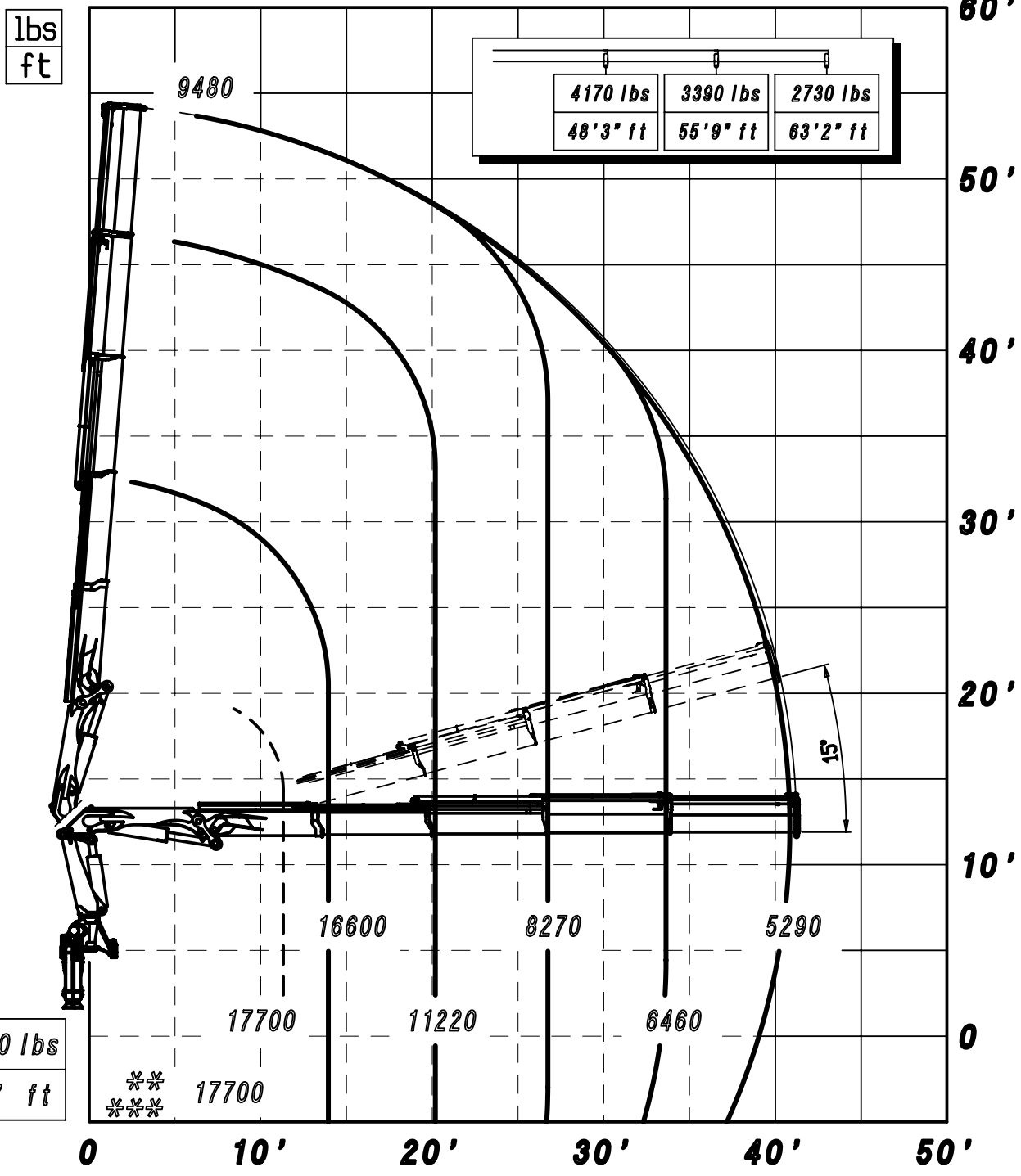


32520 lbs
7'3" ft

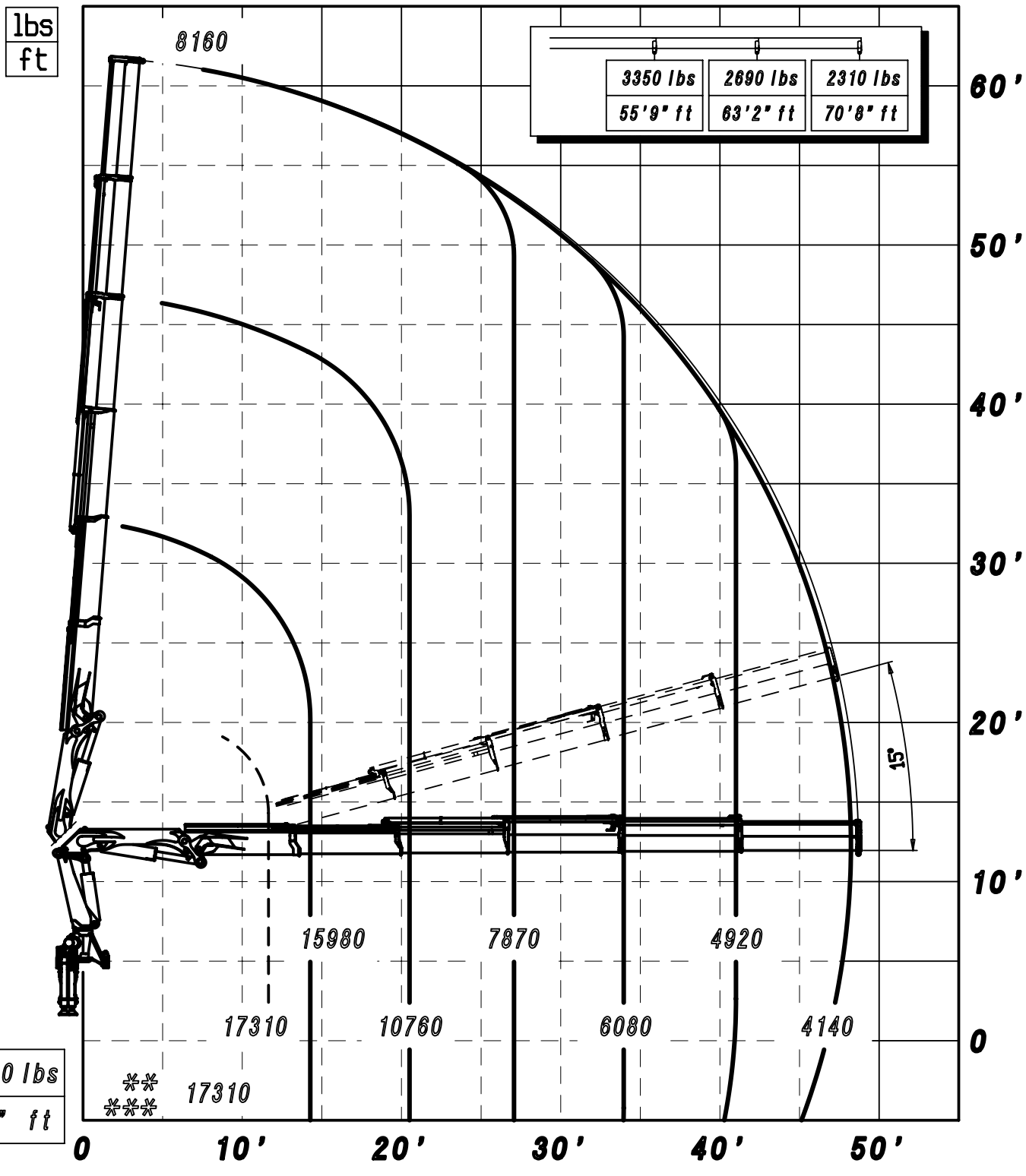
- - MAX. CAPACITY LC
 ** MAX. CAPACITY WITH MOBILE HOOK
 *** MAX. CAPACITY FROM HORIZONTAL TO VERTIVCAL
 THE STATED PERFORMANCES CAM BE OBTAINED WITH
 20° INCLINATED MAIN BOOM

** 38523 SP ** 188089

19/12/2013



-- MAX. CAPACITY LC
 ** MAX. CAPACITY WITH MOBILE HOOK
 *** MAX. CAPACITY FROM HORIZONTAL TO VERTIICAL
 THE STATED PERFORMANCES CAN BE OBTAINED WITH
 20° INCLINATED MAIN BOOM

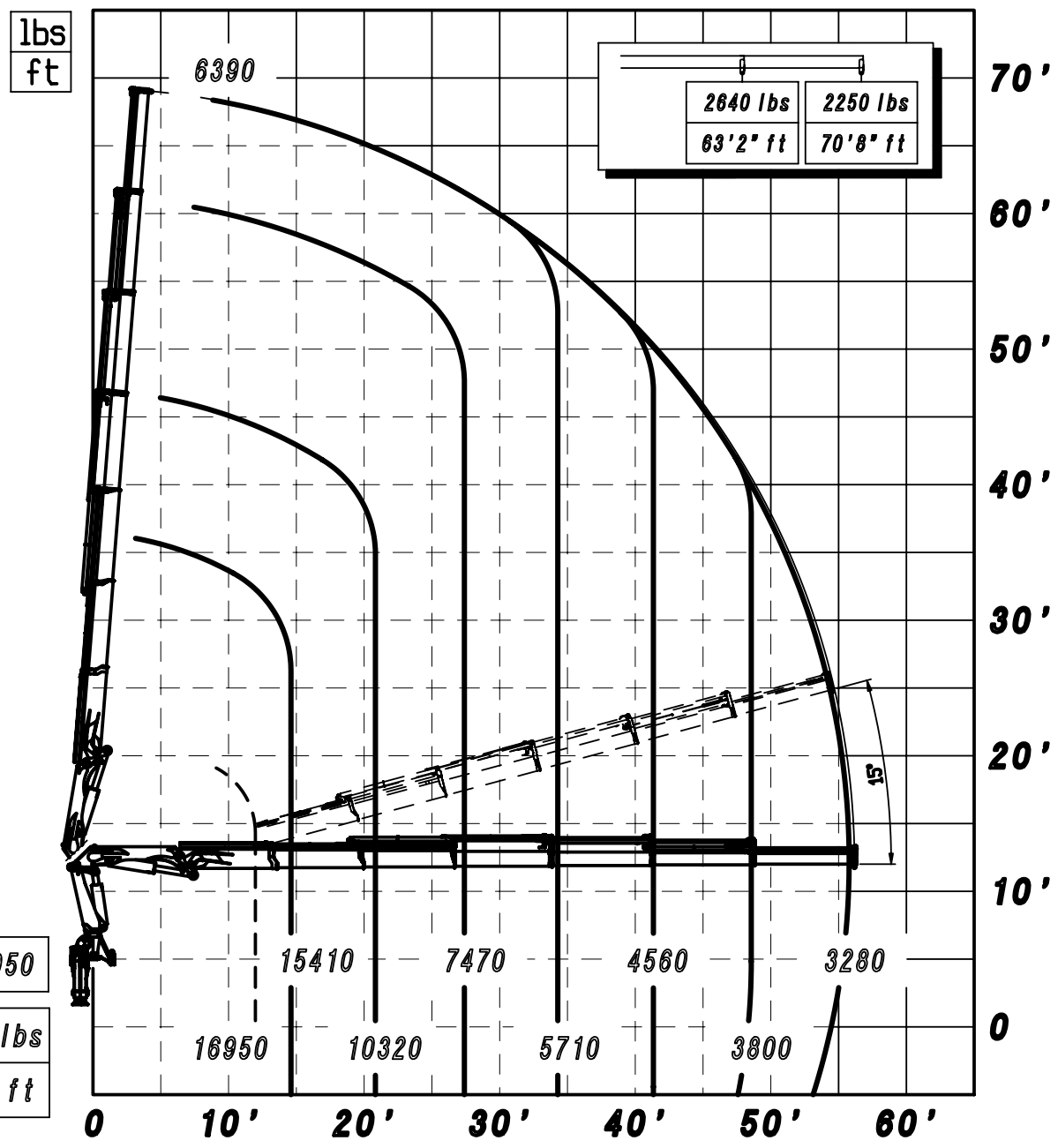


--- MAX. CAPACITY LC
 ** MAX. CAPACITY WITH MOBILE HOOK
 *** MAX. CAPACITY FROM HORIZONTAL TO VERTIVCAL
 THE STATED PERFORMANCES CAM BE OBTAINED WITH
 20° INCLINATED MAIN BOOM

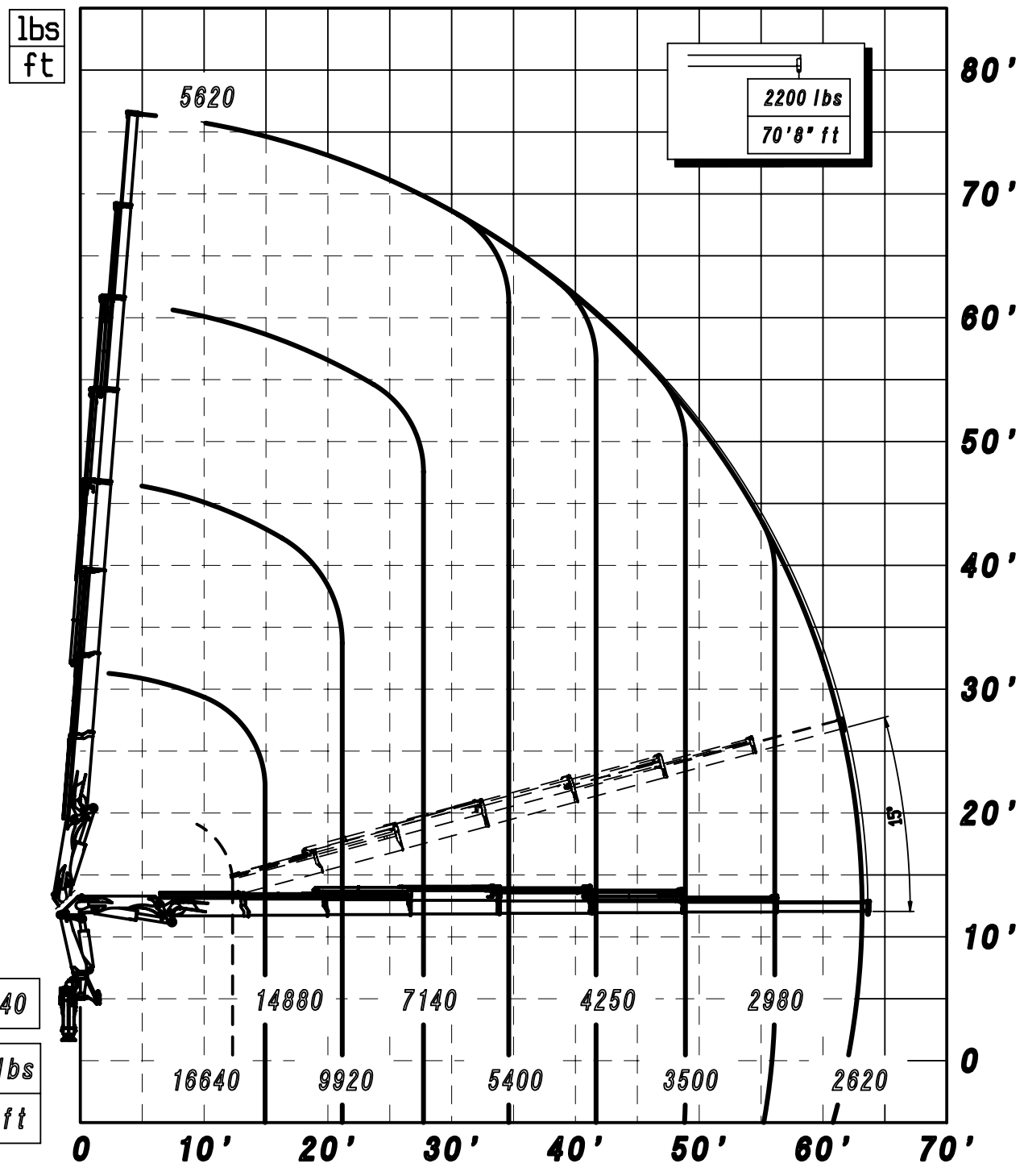
A

B

C



-- MAX. CAPACITY LC
 ** MAX. CAPACITY WITH MOBILE HOOK
 *** MAX. CAPACITY FROM HORIZONTAL TO VERTIUCAL
 THE STATED PERFORMANCES CAN BE OBTAINED WITH
 20° INCLINED MAIN BOOM



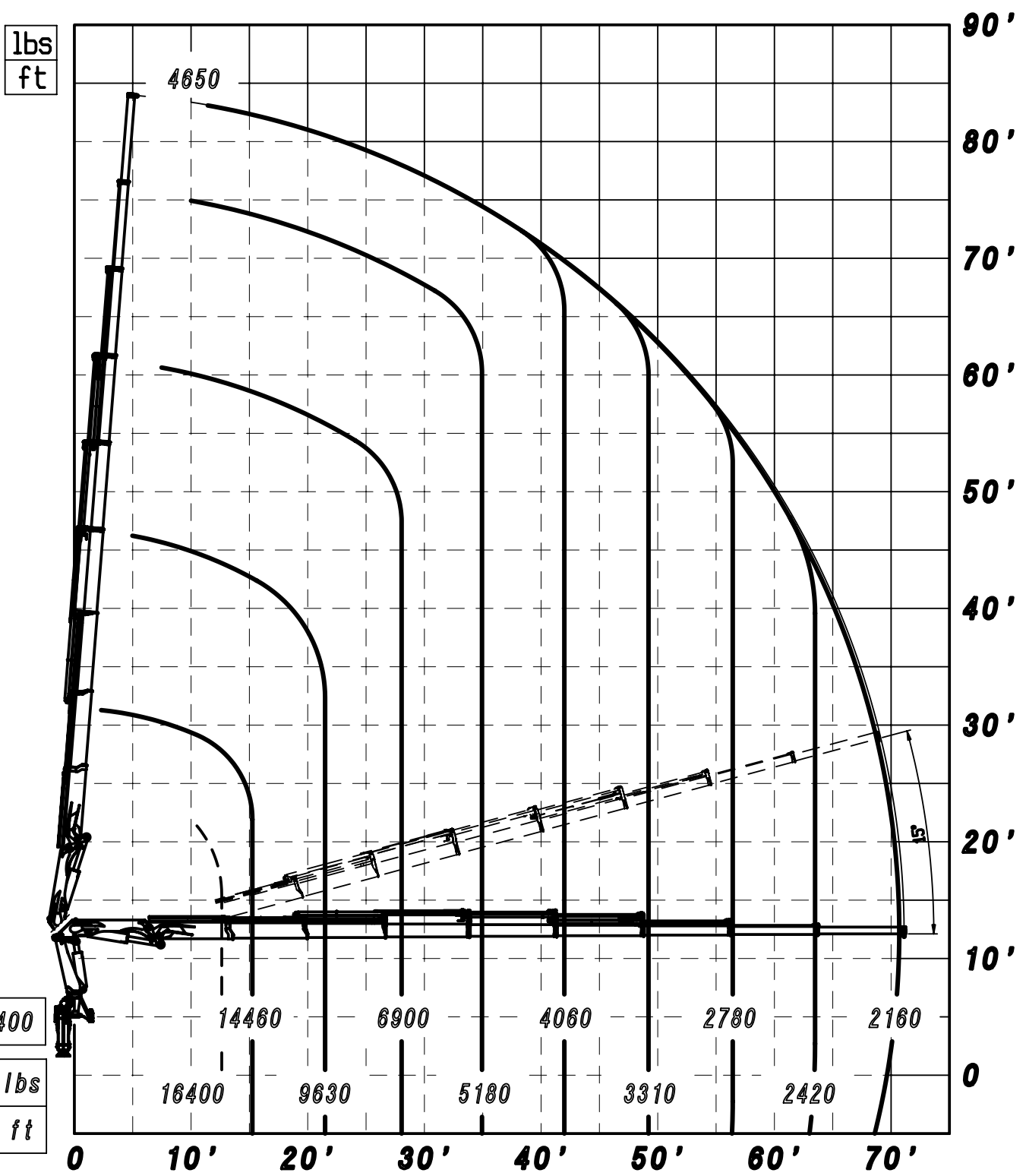
lbs
ft

2200 lbs
70'8" ft

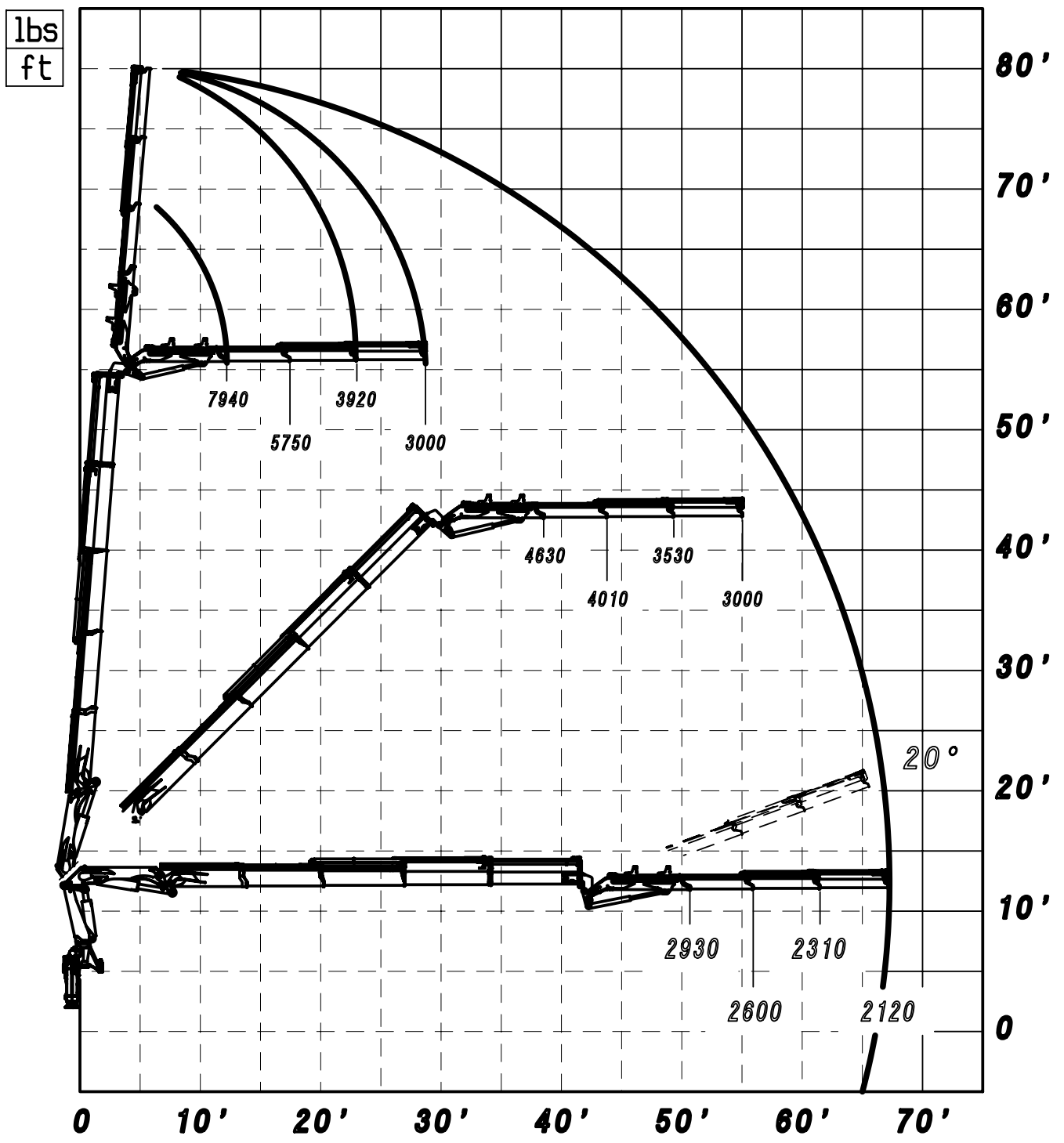
**
16640

30780 lbs
7'3" ft

-- MAX. CAPACITY LC
 ** MAX. CAPACITY WITH MOBILE HOOK
 *** MAX. CAPACITY FROM HORIZONTAL TO VERTIUCAL
 THE STATED PERFORMANCES CAN BE OBTAINED WITH
 20° INCLINATED MAIN BOOM



-- MAX. CAPACITY LC
 ** MAX. CAPACITY WITH MOBILE HOOK
 *** MAX. CAPACITY FROM HORIZONTAL TO VERTIUCAL
 THE STATED PERFORMANCES CAN BE OBTAINED WITH
 20° INCLINATED MAIN BOOM



** 38524 SP + J1113.20 ** 188100
 05/04/2013

lbs
ft

A

B

C

90'

80'

70'

60'

50'

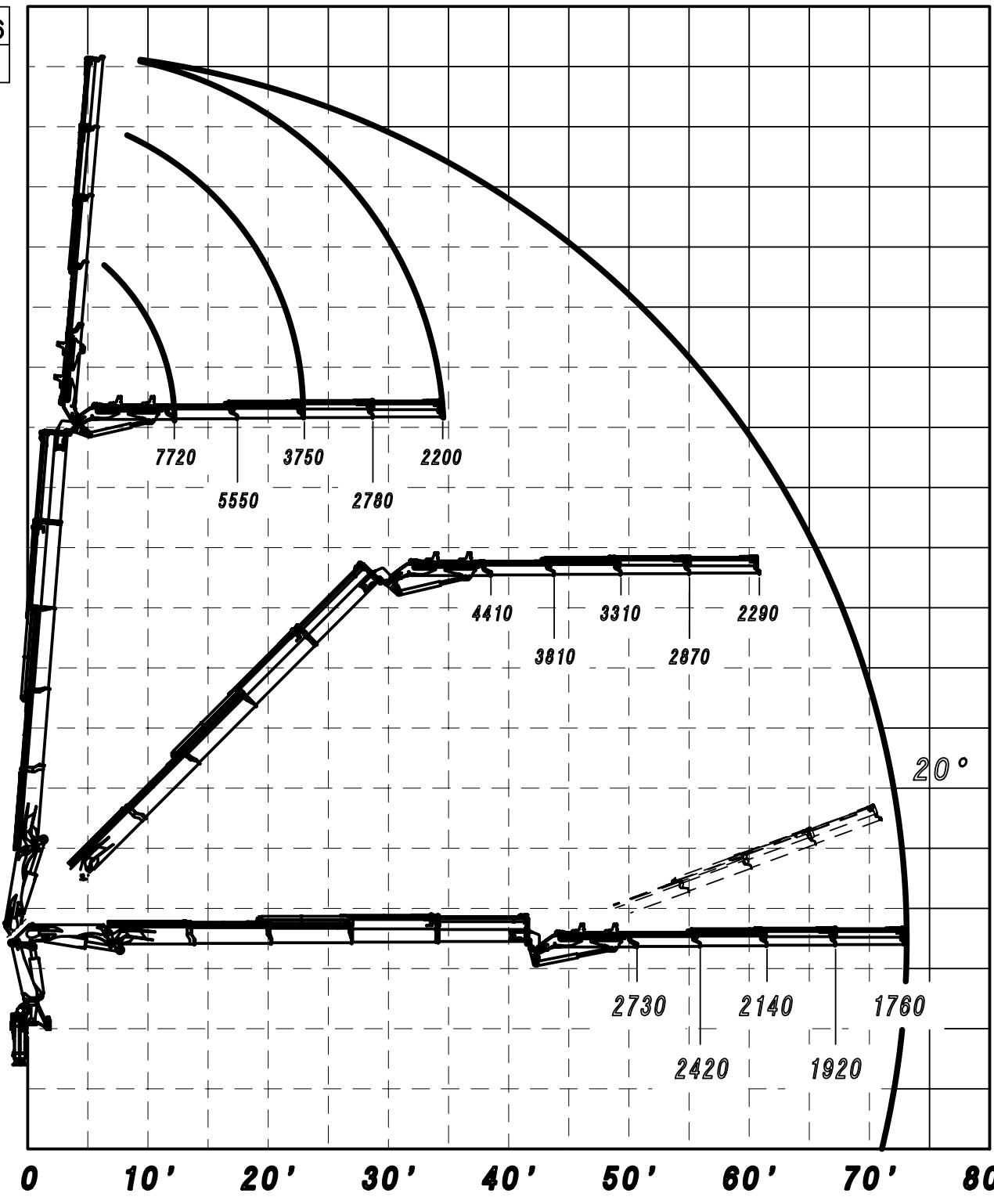
40'

30'

20'

10'

0



** 38524 SP + J1114.20 ** 188101

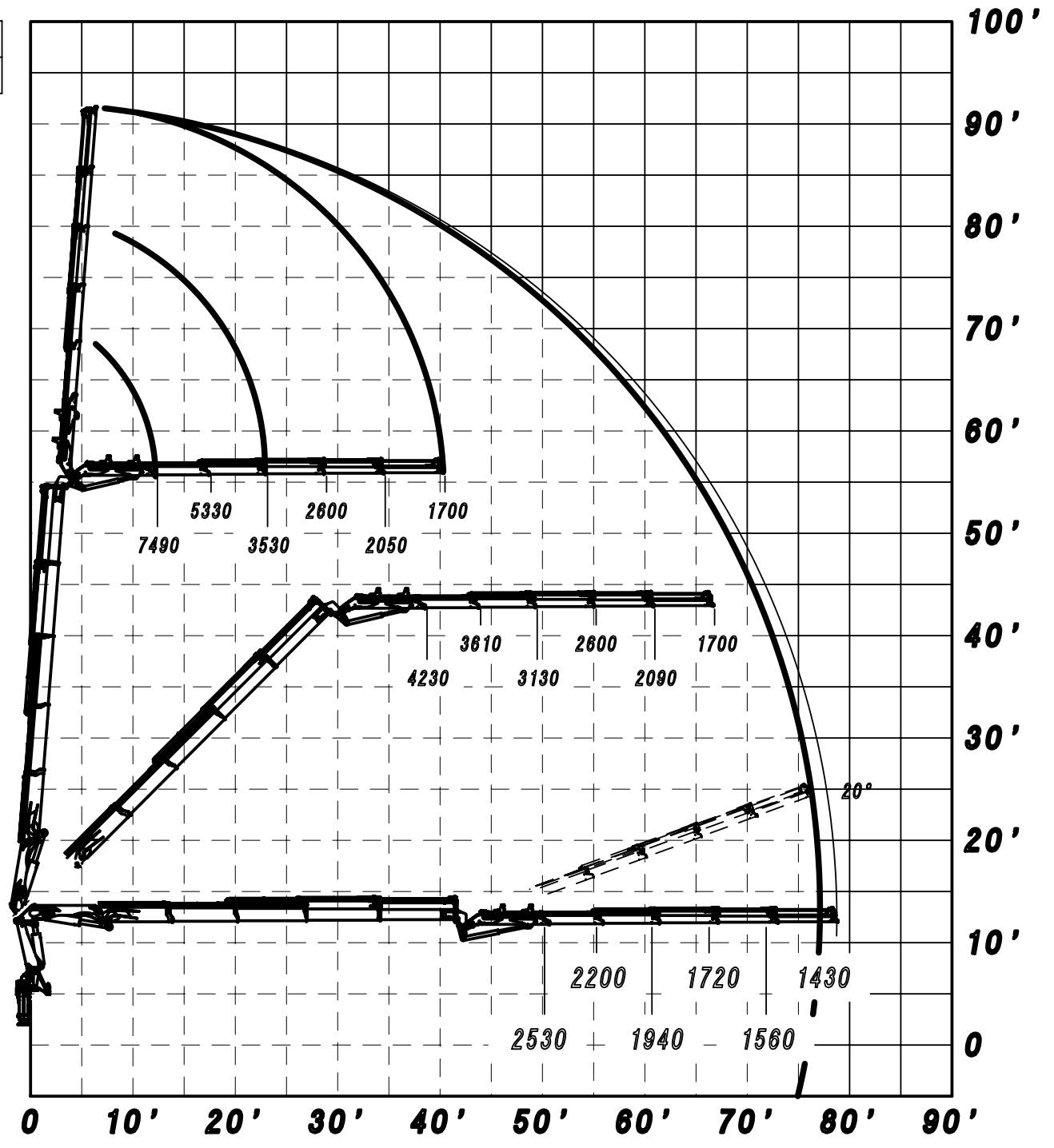
05/04/2013

lbs
ft

A

B

C

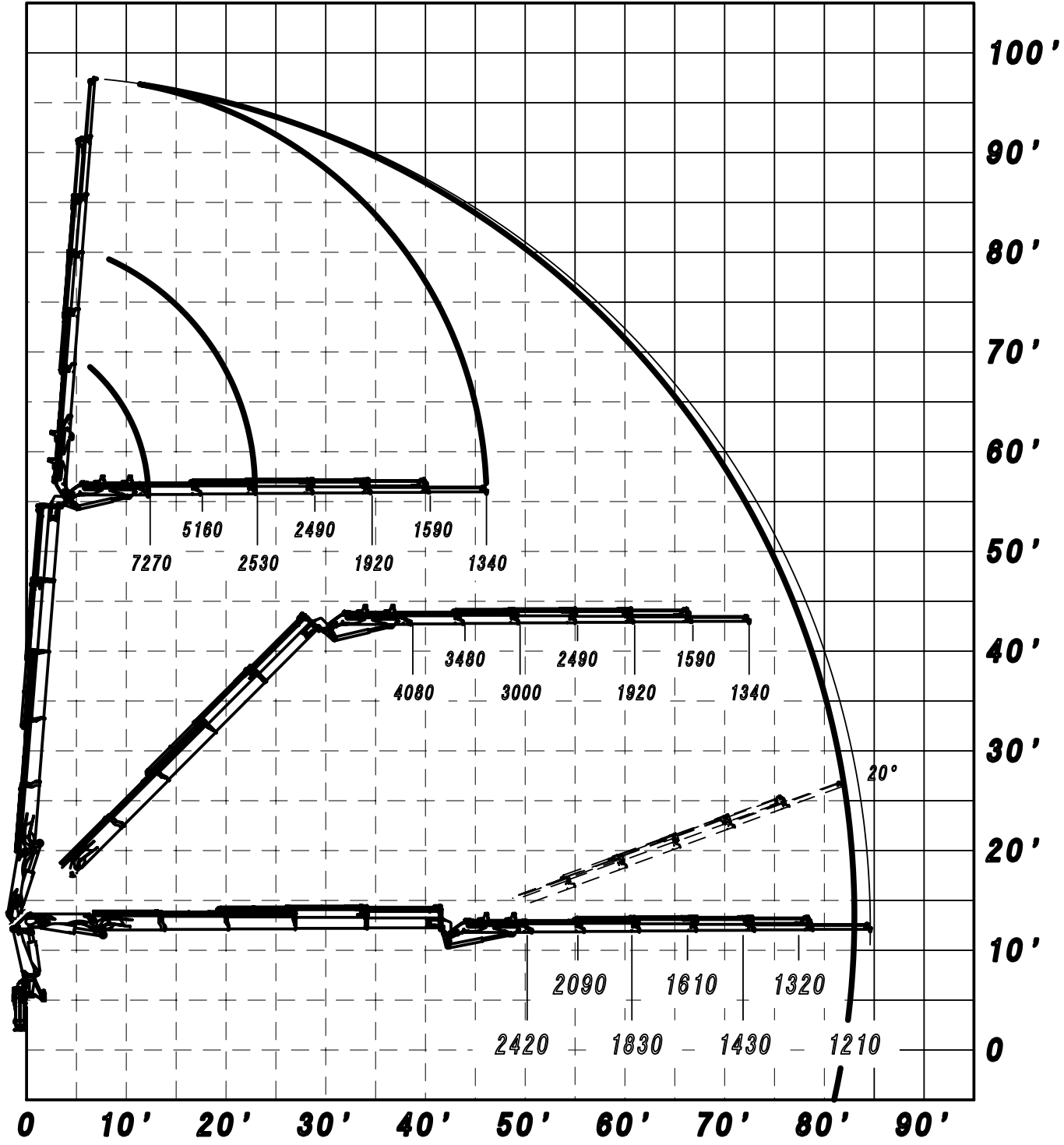


lbs
ft

A

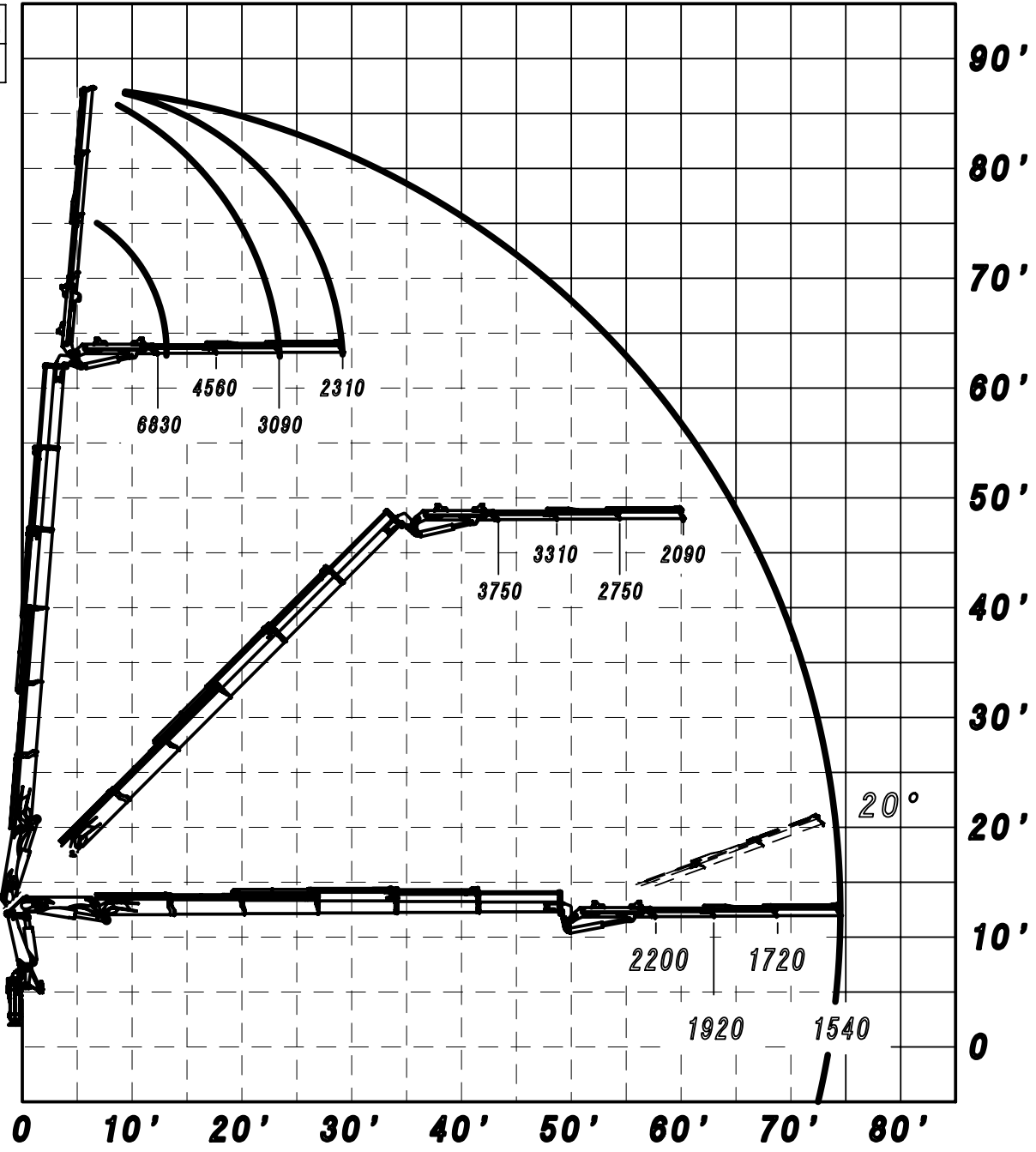
B

C



** 38524 SP + J1116.20 ** 188277
 21/11/2013

lbs
ft

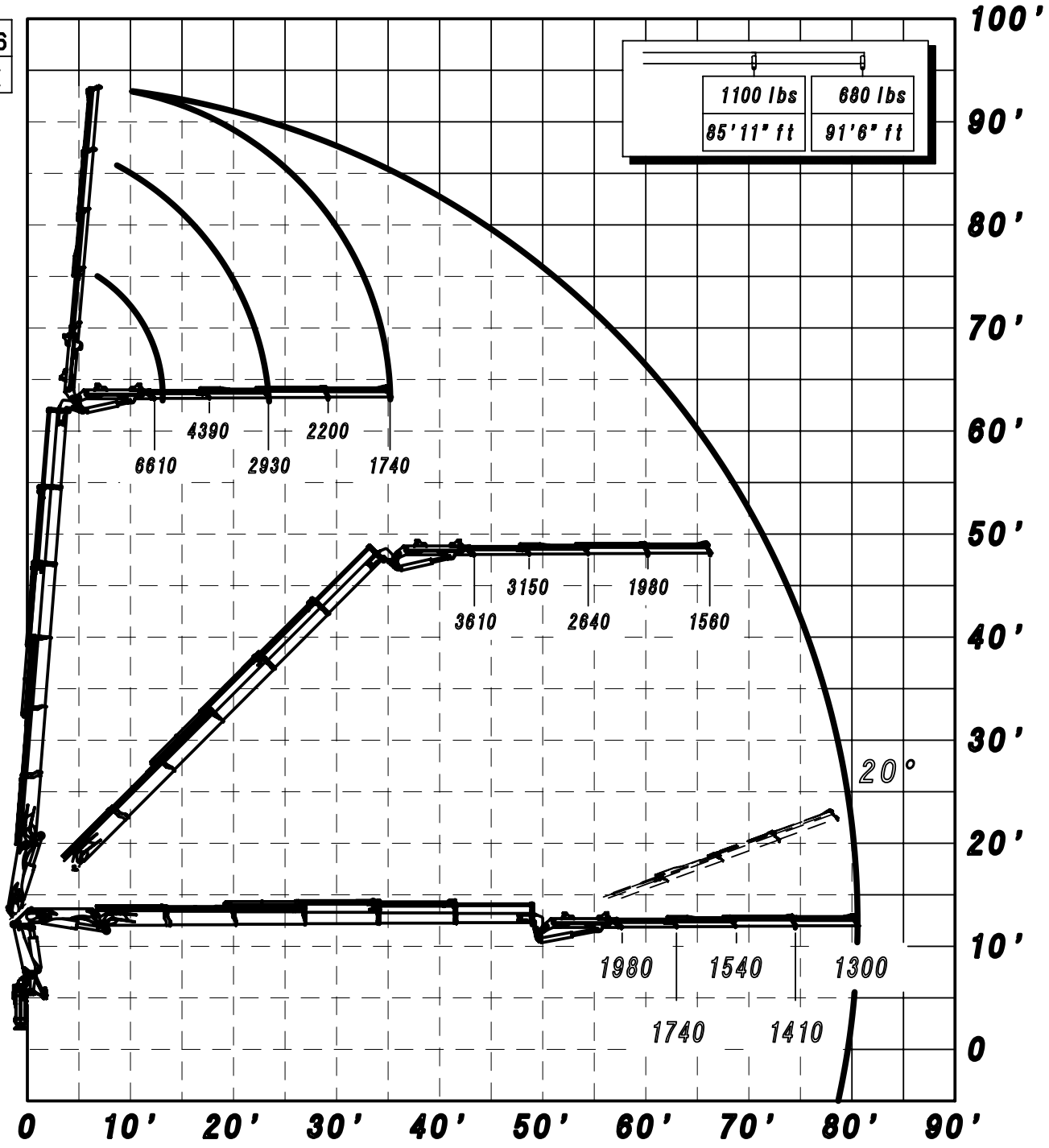


** 38525 SP + J813.20 ** 188415

18/07/2014

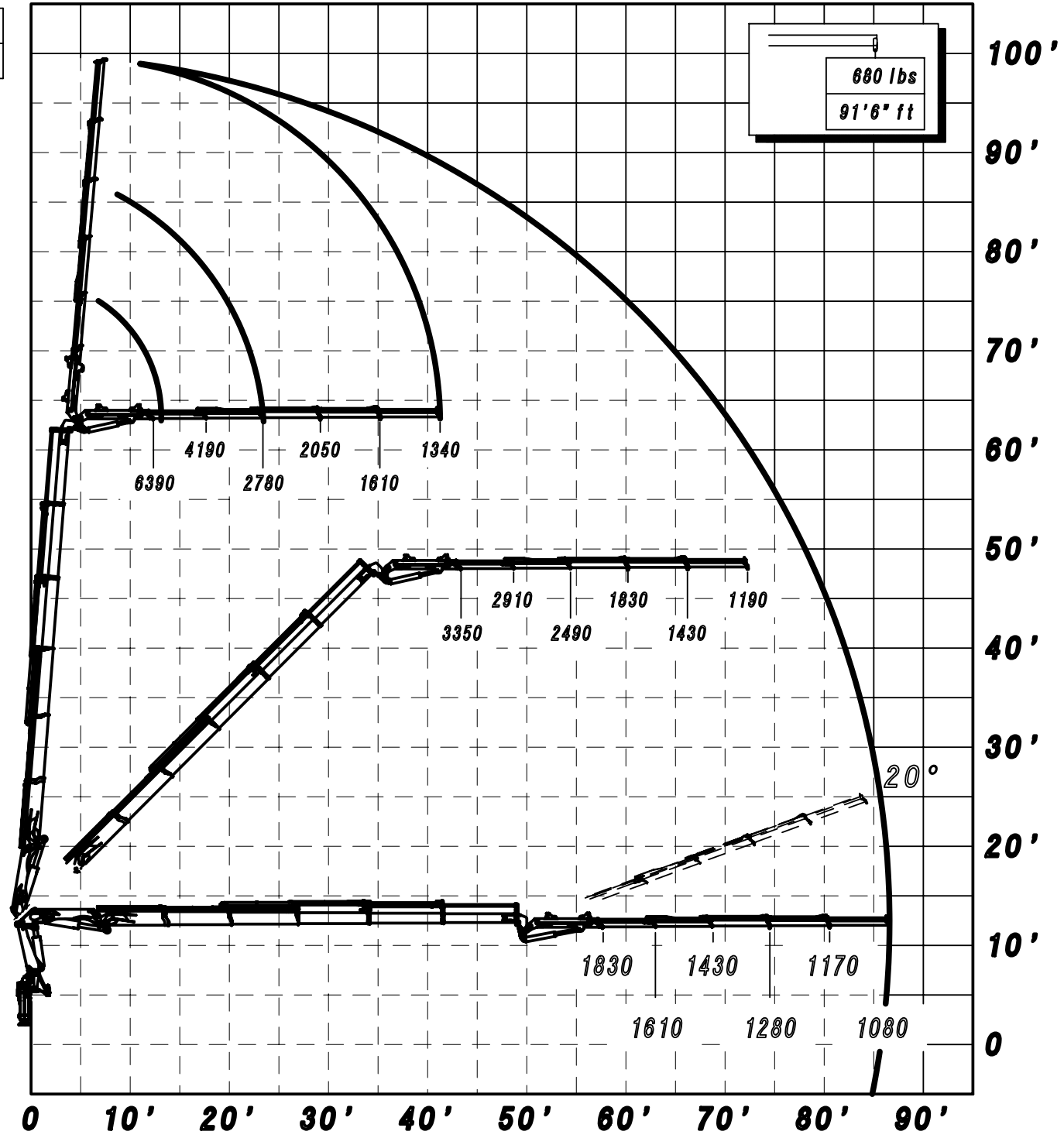
lbs
ft

1100 lbs	680 lbs
85'11" ft	91'6" ft



lbs
ft

680 lbs
91'6" ft

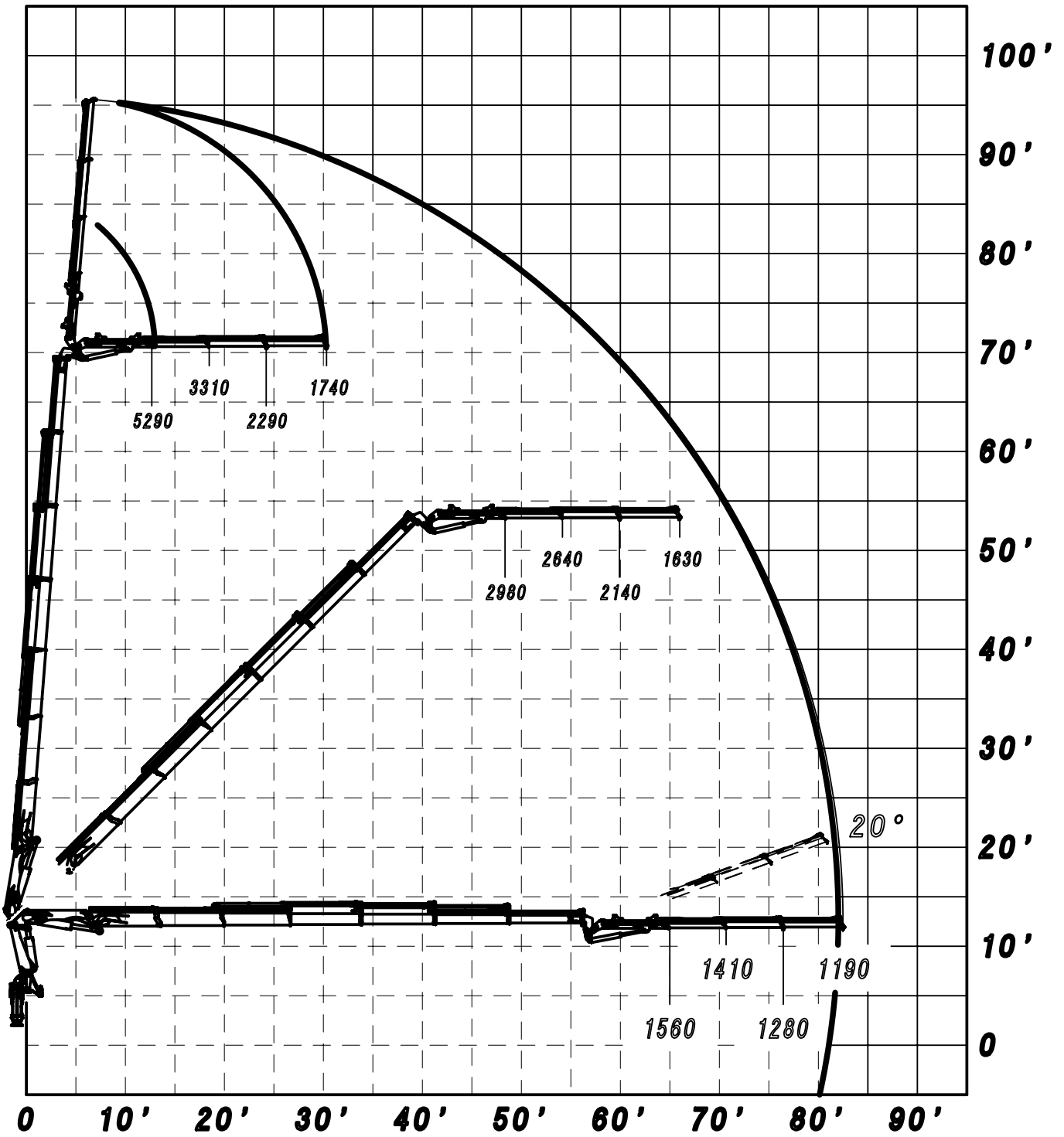


lbs
ft

A

B

C



** 38526 SP + J613.20 ** 188278

22/11/2013

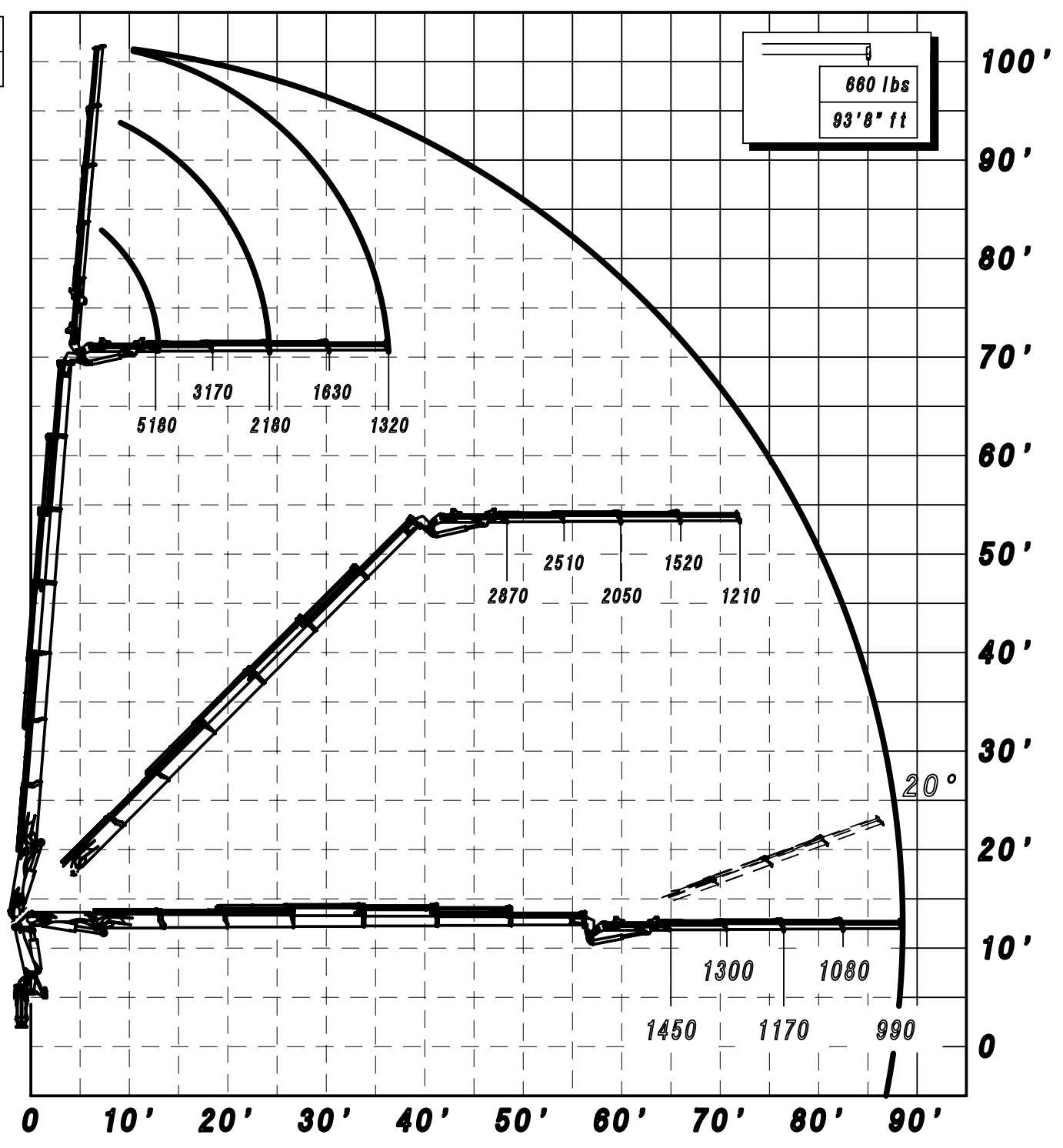
lbs
ft

660 lbs
93'8" ft

A

B

C



** 38526 SP + J614.20 ** 188104
22/11/2013

A	mm	ft
Vers.22	2505	8'2"
Vers.23	2505	8'2"
Vers.24	2505	8'2"
Vers.25	2520	8'3"
Vers.26	2520	8'3"
Vers.27	2520	8'3"
Vers.28	2520	8'3"

F	mm	ft
Vers.22	1330	4'4"
Vers.23	1330	4'4"
Vers.24	1330	4'4"
Vers.25	1330	4'4"
Vers.26	1330	4'4"
Vers.27	1390	4'7"
Vers.28	1390	4'7"

B	mm	ft
Vers.22	2370	7'9"
Vers.23	2370	7'9"
Vers.24	2370	7'9"
Vers.25	2370	7'9"
Vers.26	2370	7'9"
Vers.27	2370	7'9"
Vers.28	2415	7'11"

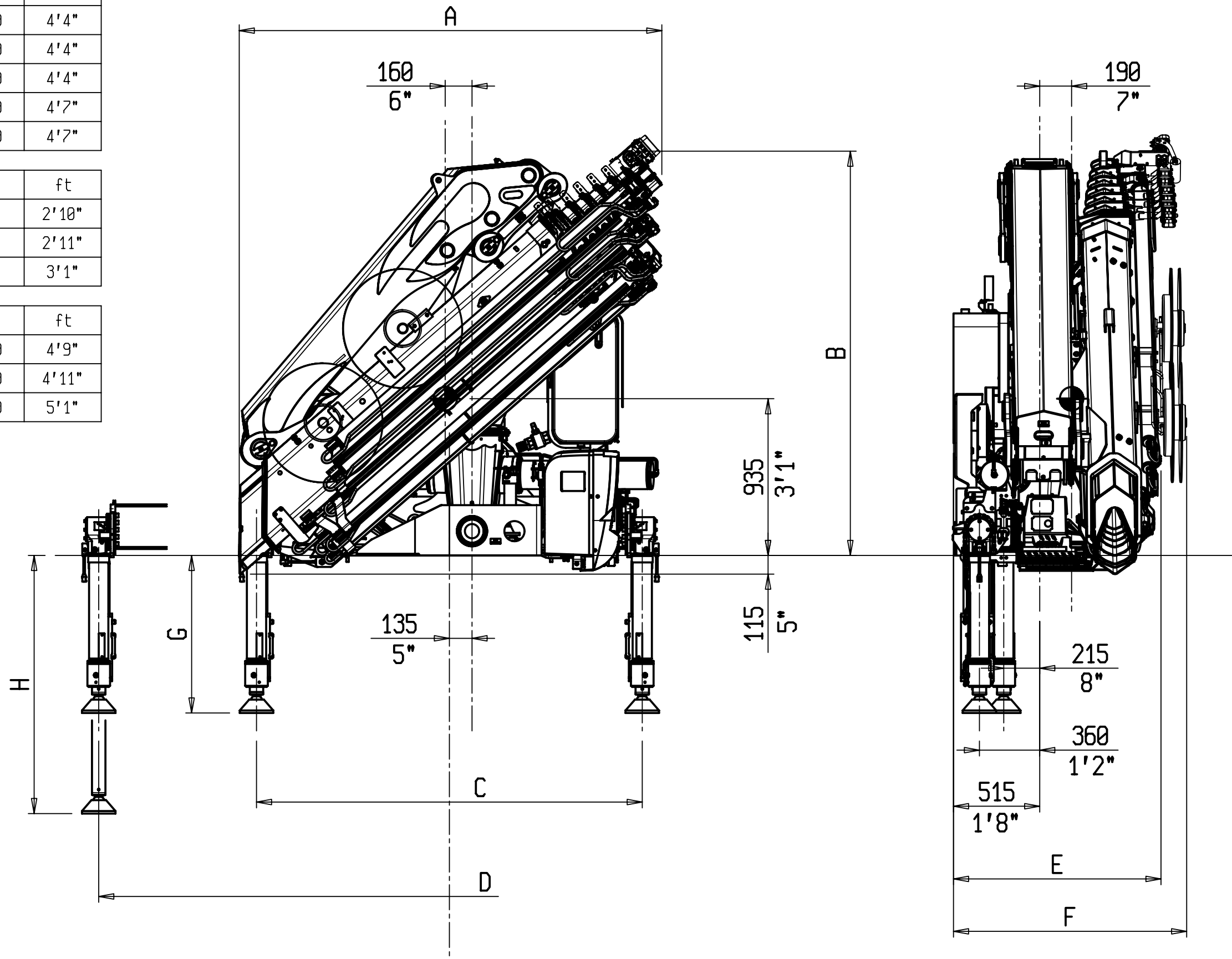
G	mm	ft
Fissi A	860	2'10"
Fissi B	900	2'11"
Rotanti	940	3'1"

H	mm	ft
Fissi A	1460	4'9"
Fissi B	1500	4'11"
Rotanti	1540	5'1"

C	mm	ft
Fissi	2250	7'5"
Rotanti	2300	7'7"

D	mm	ft
STD	5465	17'11"
STD+ROT	5520	18'1"
XL	6545	21'6"
XL+ROT	6600	21'8"
SXL	7345	24'1"
SXL+ROT	7400	24'3"

E	mm	ft
Vers.22	1125	3'8"
Vers.23	1125	3'8"
Vers.24	1125	3'8"
Vers.25	1175	3'10"
Vers.26	1200	3'11"
Vers.27	1220	4'
Vers.27	1240	4'1"



1

2

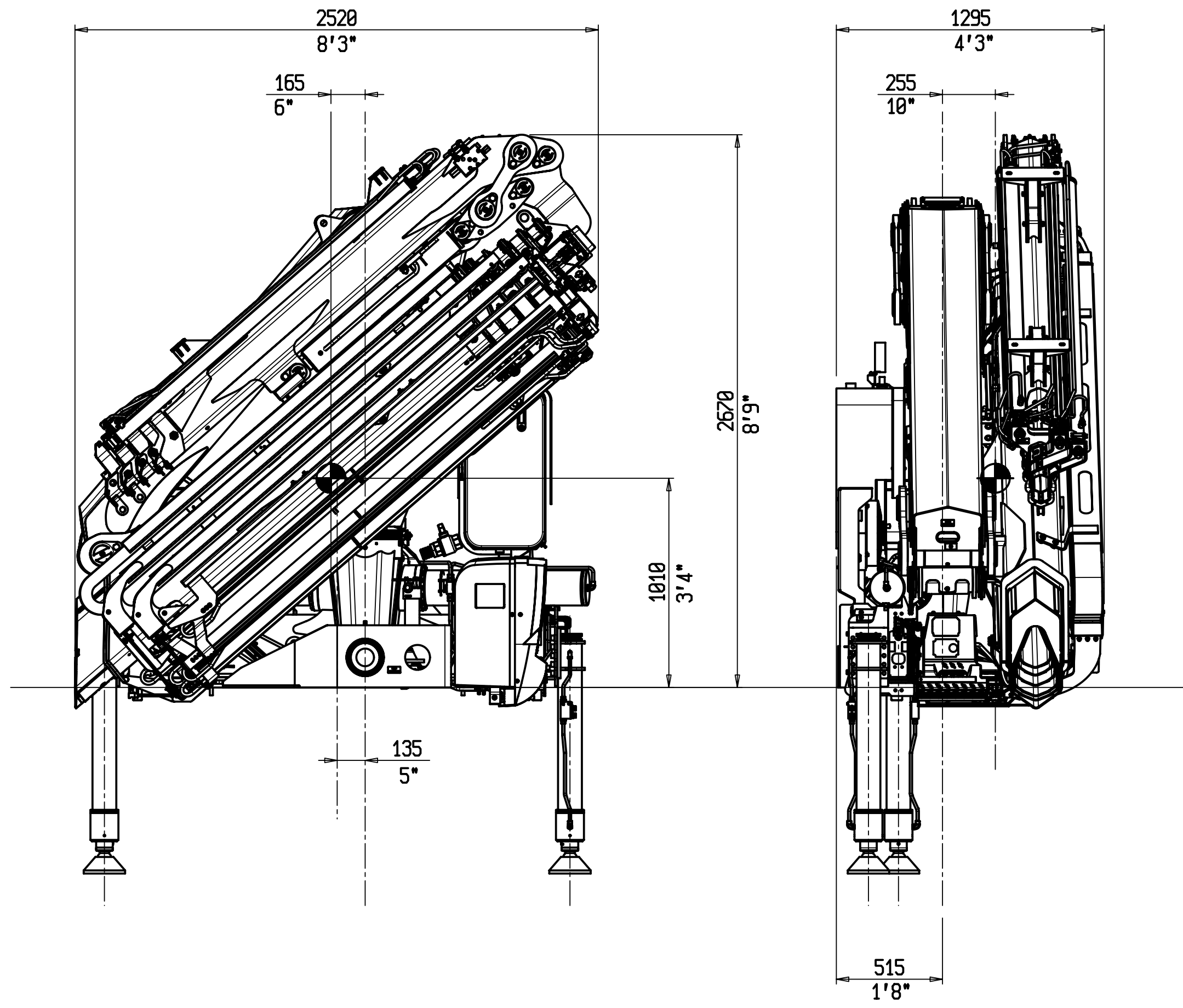
3

4

A

B

C



1

2

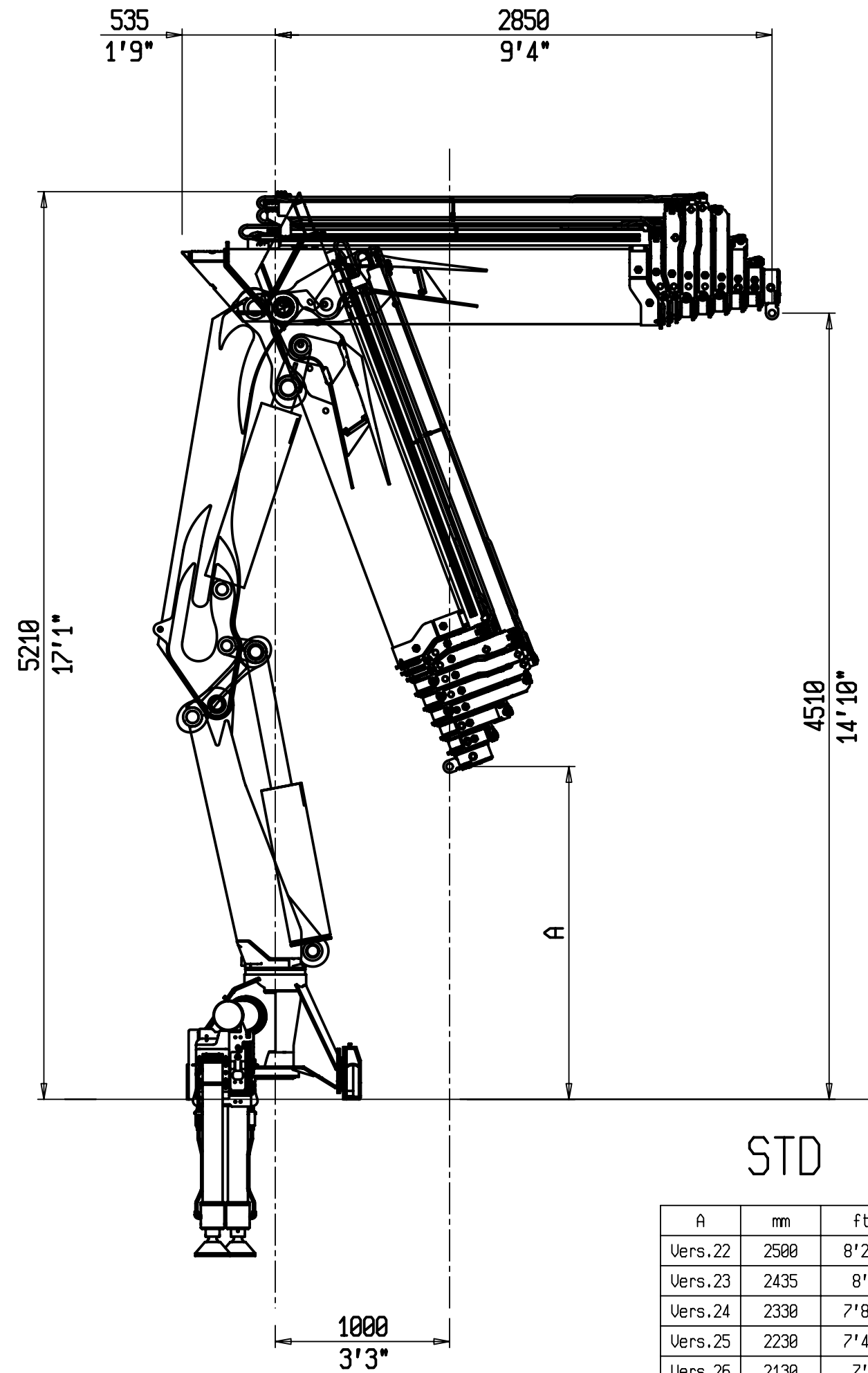
3

4

A

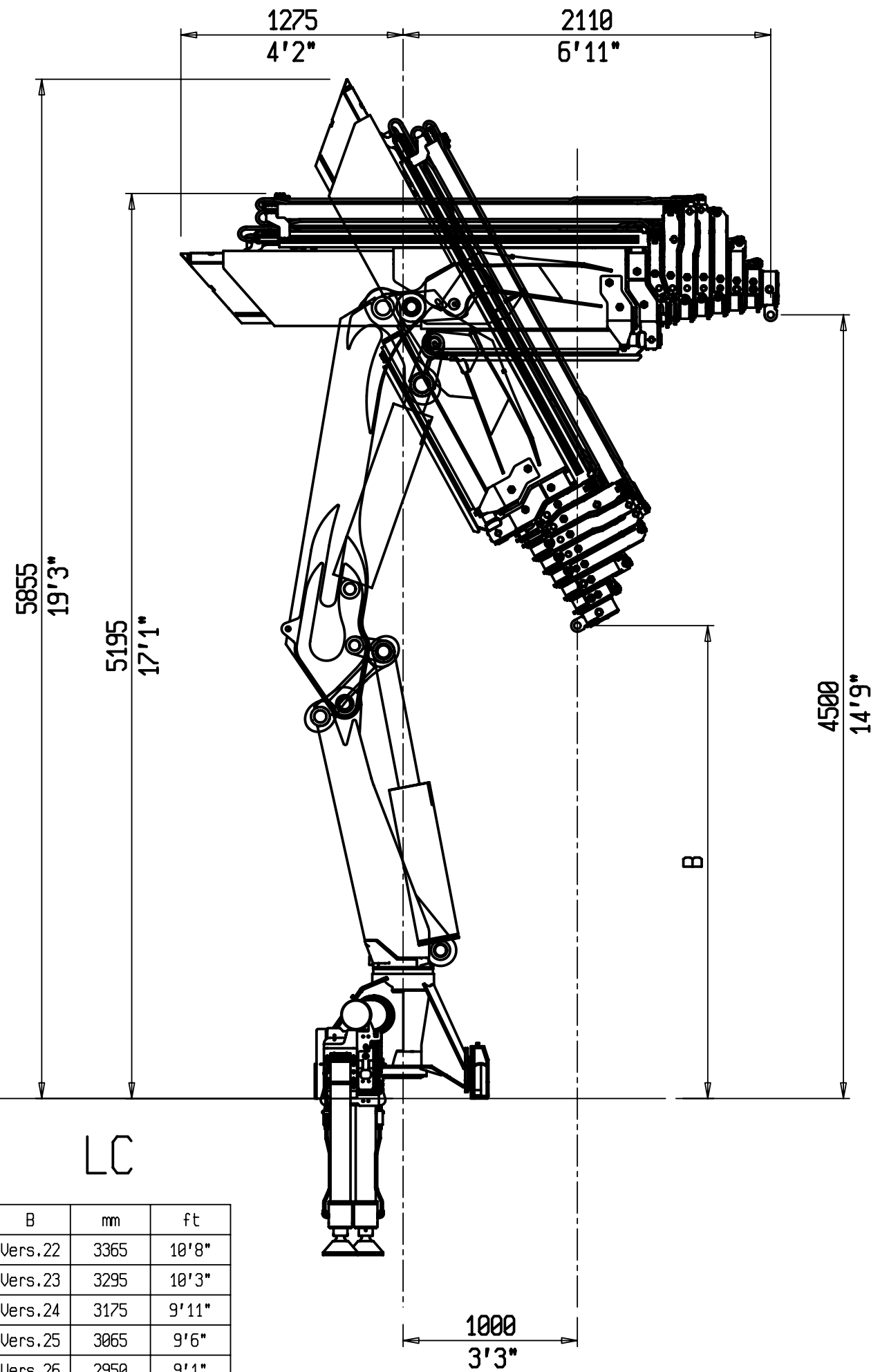
B

C



STD

A	mm	ft
Vers.22	2500	8'2"
Vers.23	2435	8'
Vers.24	2330	7'8"
Vers.25	2230	7'4"
Vers.26	2130	7'
Vers.27	2025	6'8"
Vers.28	1910	6'3"



LC

B	mm	ft
Vers.22	3365	10'8"
Vers.23	3295	10'3"
Vers.24	3175	9'11"
Vers.25	3065	9'6"
Vers.26	2950	9'1"
Vers.27	2840	8'9"
Vers.28	2715	8'9"